

Saint Elmo, Woodland, Ashburton, Devon





A wonderful family home with **outbuildings and ancillary accommodation** as well as beautiful grounds.

Summary of accommodation

St. Elmo House

Lower Ground Floor: Cellars

Ground Floor: Entrance hall | Drawing room | Dining room
Kitchen/breakfast room | Snug | Study | Office | Cloakroom
Laundry/utility | Boot room | Double garage | Further garage

First Floor: Principal bedroom with dressing room, en suite and balcony | Four further bedrooms, one with en suite and two with a shared balcony | Bathroom | Shower room

Annexe

Ground Floor: Hall | Kitchen/sitting/dining room | Utility
Two bedrooms | Bathroom | WC | Garages

First Floor: Sitting/dining room | Bedroom with dressing room and en suite | Further en suite bedroom | Eaves storage

The Lodge

Ground Floor: Reception hall | Three bedrooms, one en suite
Bathroom

First Floor: Sitting room | Kitchen/breakfast room | Separate WC
Landing/study | Two bedrooms, both with en suite | Bathroom

In all approximately 4.14 acres

Distances

A38 (Devon Expressway) 2.5 miles, Ashburton 3.5 miles

Totnes mainline station 6.9 miles

(London Paddington 2 hours 58 minutes), Exeter 24.8 miles

(All distances and times are approximate)



Knight Frank Exeter
19 Southernhay East
Exeter
EX1 1QD
[knightfrank.co.uk](https://www.knightfrank.co.uk)

Mark Proctor
01392 423111
mark.proctor@knightfrank.com



Situation

Ashburton has an excellent range of facilities including independent restaurants such as Rafikis, The Old Library as well as many coffee shops, a delicatessen, artisan bakery, a fish deli and cookery school. The charming village of Staverton is also nearby and boasts a village pub and 14th century church in a beautiful, scenic setting.

Landscope also has an excellent pub with the Live and let live. The nearby affluent market town of Totnes gives access to a wide range of both independent and larger stores, together with pubs, restaurants and a leisure centre.

Staverton boasts access to a village prep school and nursery, St Christopher's and offers a wide range of both state and independent schools in neighbouring towns, including Dartington Primary School (4.9 miles) Landscope Primary (2.8miles) and King Edward VI Community College.





The property has nearby local train stations in Staverton village as well as a nearby mainline train station (Totnes, 6.9 miles) with excellent connections to London as well and Penzance.

The South Hams is bordered to the north by the beauty of Dartmoor and to the south by the enchanting coastline, little creeks and safe unspoilt sandy beaches. For the sailing enthusiast the excellent facilities of both Dartmouth and Salcombe are also close by.

The property

Saint Elmo is a superb south-facing property and is accessed via electric gates and an impressive, extended driveway. Constructed in 1869 and enveloped by enchanting gardens and expansive grounds, the house embodies the quintessential attributes of a late Victorian estate. Elegantly merging historical charm with contemporary conveniences, the property encourages a wonderful lifestyle. The property has recently undergone significant improvements including a new slate roof on the main house and a new drainage system.

The interior layout offers versatile accommodation, thoughtfully arranged to feature generously sized rooms. Many of these are adorned with lofty, coved ceilings and striking fireplaces, and offer captivating vistas of the surrounding gardens, grounds, and countryside. Upon entering, the ambiance is heightened by oak flooring and elaborately adorned doors, leading to a powder room and five reception spaces making it ideal for entertaining.

A meticulously designed kitchen/breakfast area showcases bespoke oak fittings, complete with a 4-oven AGA. Adjacent to this, a utility room connects to a boot room, which in turn grants access to the two garages. Additionally there is a spacious wine cellar.

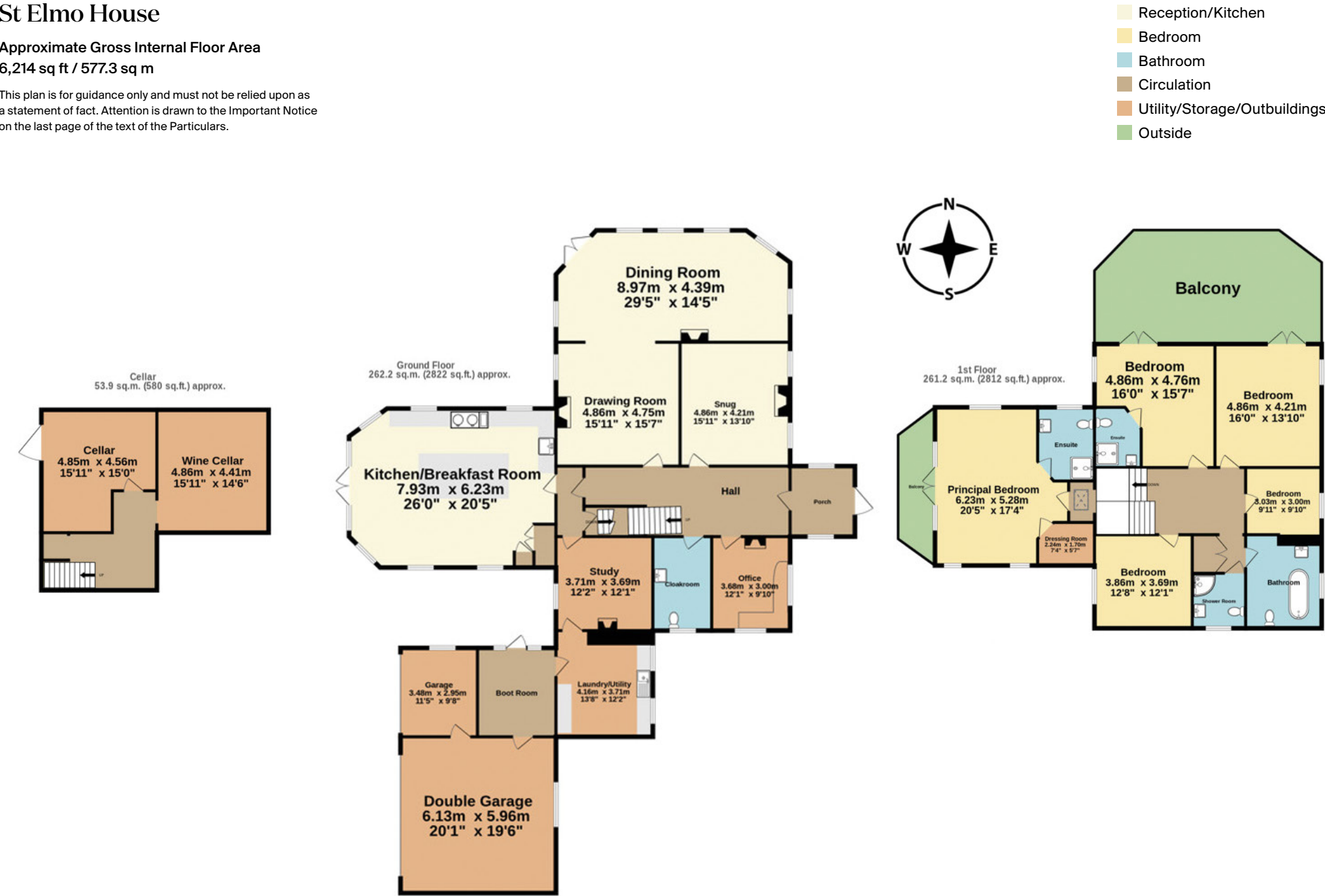
The upper level of the property features five bedrooms, two of which are en suite and three that open onto balconies.



St Elmo House

Approximate Gross Internal Floor Area
6,214 sq ft / 577.3 sq m

This plan is for guidance only and must not be relied upon as a statement of fact. Attention is drawn to the Important Notice on the last page of the text of the Particulars.



Ancillary accommodation

Among the property’s notable features are several ancillary structures. A charmingly stone-built coach house presents five bedrooms (including three en suite), alongside a bathroom, a sitting room adorned with exposed beams and a fireplace, and a generously sized kitchen/dining space. The lodge is currently being used as a 5* luxury holiday let.



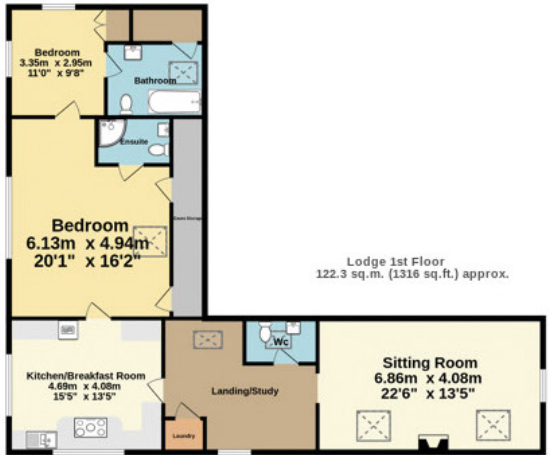
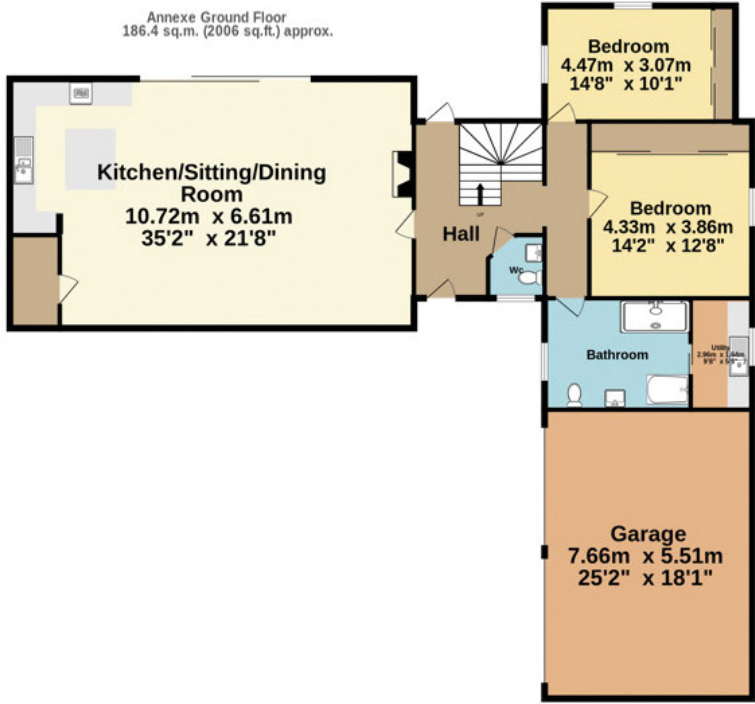
Annexe & The Lodge

Approximate Gross Internal Floor Area

Annexe: 3,260 sq ft / 302.9 sq m

The Lodge: 2,115 sq ft / 196.5 sq m

This plan is for guidance only and must not be relied upon as a statement of fact. Attention is drawn to the Important Notice on the last page of the text of the Particulars.



- Reception/Kitchen
- Bedroom
- Bathroom
- Circulation
- Utility/Storage/Outbuildings
- Outside



There is also a self-contained annexe which comprises four bedrooms and two bathrooms. The property has been updated to a very high standard making it ideal for entertaining, with a spacious sitting room and good-sized kitchen. Separate access routes are designated for each property via distinct driveways branching from the main thoroughfare.



Gardens and grounds

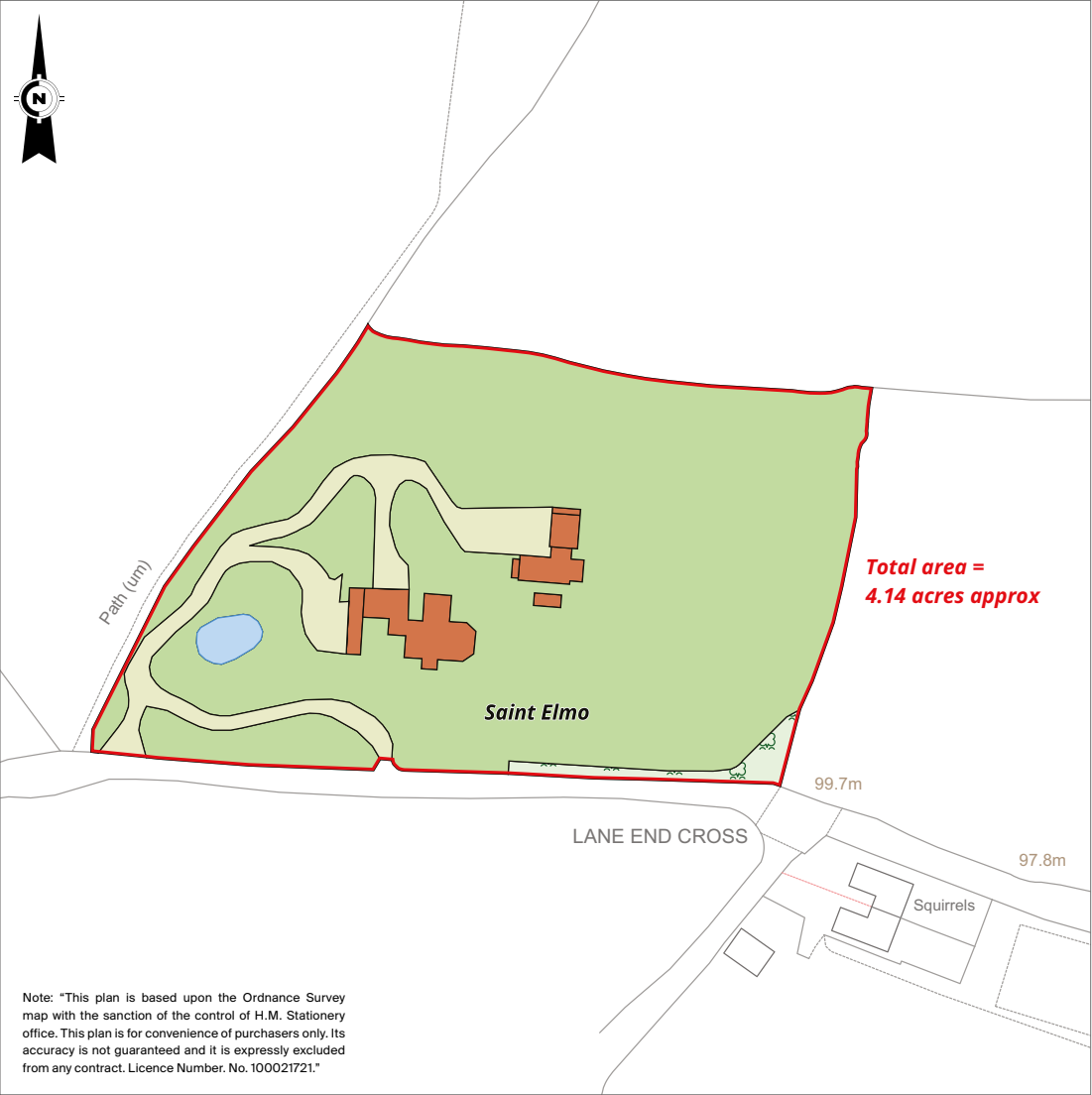
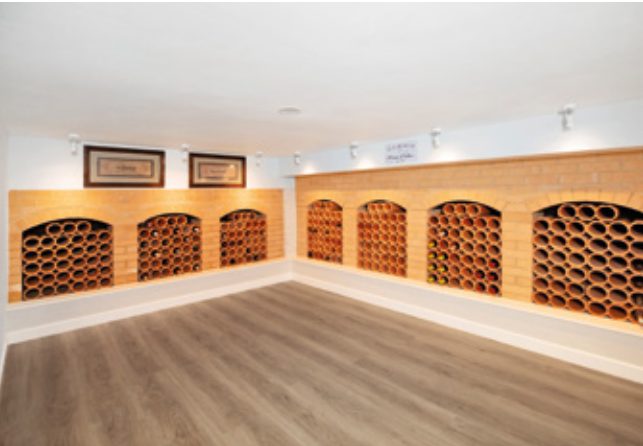
Approached through a long, picturesque driveway bordered by mature trees including beech, sycamore, horse chestnut, and oak, the property's meticulously landscaped gardens are a true delight.

Broad lawns are punctuated by an array of shrubs, trees, and bushes, with the presence of a serene pond adding to the charm. Each property enjoys its own terraced area, perfect for outdoor dining. The main residence further boasts a walled garden along with a spacious orangery, which is an excellent area for entertaining and eating al fresco.

The remaining expanse of gardens and grounds seamlessly integrate, providing ample well-maintained space which is also suitable for equestrian use.

Services

Mains water and electricity. Private drainage. Oil fired central heating in the main house, lodge and annexe. Oil fired AGA.



Fixtures and fittings

All items usually known as tenant's fixtures and fittings whether mentioned or not in these particulars together with all items of equipment and garden statuary are excluded from the sale but some may be available by separate negotiation.

Viewing

Strictly by appointment only with agents Knight Frank Tel: 01392 423111

Directions (Postcode TQ13 7LN)

If coming from the direction of Exeter and the M5 motorway, continue towards Plymouth on the A38 dual carriageway for about 16.6 miles and then, before the first Ashburton signpost (B3352), turn left at a fairly insignificant junction signed to Woodland and Denbury. Follow this road for over a mile, turning right where signed towards Woodland. At the next T-junction, turn left and after about half a mile the entrance for Saint Elmo will be concealed on the left-hand side. **NOTE:** For SATNAV, the postcode will take you to the centre of the parish, but not to the property.

Property information

Tenure: Freehold

Local Authority: Teignbridge District Council, Forde House, Brunel Road, Newton Abbot TQ12 4XX. Tel. 01626 361 101.

Council Tax: Band F

EPC Rating: D

Offers in excess of £2,000,000



Fixtures and fittings: A list of the fitted carpets, curtains, light fittings and other items fixed to the property which are included in the sale (or may be available by separate negotiation) will be provided by the Seller's Solicitors.

Important Notice: 1. Particulars: These particulars are not an offer or contract, nor part of one. You should not rely on statements by Knight Frank LLP in the particulars or by word of mouth or in writing ("information") as being factually accurate about the property, its condition or its value. Neither Knight Frank LLP nor any joint agent has any authority to make any representations about the property, and accordingly any information given is entirely without responsibility on the part of the agents, seller(s) or lessor(s). 2. Photos, Videos etc: The photographs, property videos and virtual viewings etc. show only certain parts of the property as they appeared at the time they were taken. Areas, measurements and distances given are approximate only. 3. Regulations etc: Any reference to alterations to, or use of, any part of the property does not mean that any necessary planning, building regulations or other consent has been obtained. A buyer or lessee must find out by inspection or in other ways that these matters have been properly dealt with and that all information is correct. 4. VAT: The VAT position relating to the property may change without notice. 5. To find out how we process Personal Data, please refer to our Group Privacy Statement and other notices at <https://www.knightfrank.com/legals/privacy-statement>. Particulars dated June 2024. Photographs and videos dated August 2023 and June 2024.

All information is correct at the time of going to print. Knight Frank is the trading name of Knight Frank LLP. Knight Frank LLP is a limited liability partnership registered in England and Wales with registered number OC305934. Our registered office is at 55 Baker Street, London W1U 8AN. We use the term 'partner' to refer to a member of Knight Frank LLP, or an employee or consultant. A list of members names of Knight Frank LLP may be inspected at our registered office. If you do not want us to contact you further about our services then please contact us by either calling 020 3544 0692, email to marketing.help@knightfrank.com or post to our UK Residential Marketing Manager at our registered office (above) providing your name and address. Brochure by wordperfectprint.com

