



## SOUTHCOMBE HOUSE

Widecombe-in-the-moor, Devon





# SITUATED IN A PEACEFUL AND ELEVATED POSITION

In the Dartmoor National Park with outstanding views towards  
Bonehill Rocks on the edge of the popular village of Widecombe.

## Summary of accommodation

Kitchen/dining room | Drawing room | Principal bedroom suite | Three further bedrooms | Pantry | Laundry | Utility | Larder

Workshop | Separate one bed annexe | Stables

In all 4.92 acres

Local Authority: Teignbridge District Council

Council Tax band: G

Tenure: Freehold

Guide price: £1,500,000



# SITUATION

Southcombe House is in the heart of the Widecombe valley, just a 10 minute walk from the village of Widecombe-in-the-Moor which includes two café tearooms, the Old Inn and the Rugglestone Inn. At the centre of the village is the magnificent church of St Pancras, also known as the “Cathedral of the Moor” and sitting quietly next door is the National Trust’s Church House and Sexton’s Cottage. However, just as important, is the excellent village primary school. Ashburton also has a great range of facilities including independent restaurants such as Rafkis, Amelias and the Old Library as well as coffee shops, a delicatessen, artisan bakery, a fish deli and cookery school. Totnes is also nearby providing a wide range of facilities and is a thriving market town. Exeter also has fantastic shopping facilities in Princesshay which also includes a John Lewis, Waitrose and IKEA.

There are also well regarded schools in Exeter such as Exeter School and the Maynard as well as Torbay Grammar Schools and Mount Kelly in Tavistock. The A38 dual carriageway is accessible at Ashburton, and links with the M5 to Exeter.

There are good rail links from Totnes and Newton Abbot as well as flights from Exeter Airport. The house is ideally located to take advantage of much of what Devon has to offer, with excellent access to the River Dart and the South Hams which is famous for its beaches and sailing. There is also outstanding walking and riding nearby and also wild swimming available in the pools of the River Dart. For golfers there are many courses on Dartmoor and the south coast including Bovey Castle and Thurlestone, both of which offer excellent facilities.

**Distances:** Ashburton 7.2 miles, Bovey Tracey 8.1 miles, Totnes 14.2 miles (London Paddington 2hrs 56mins), Exeter 25.4 miles (All distances and times are approximate)





# THE PROPERTY

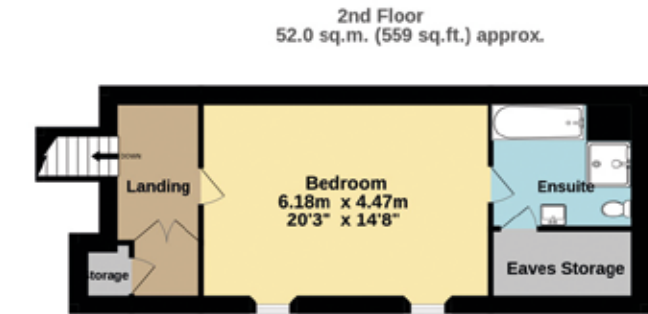
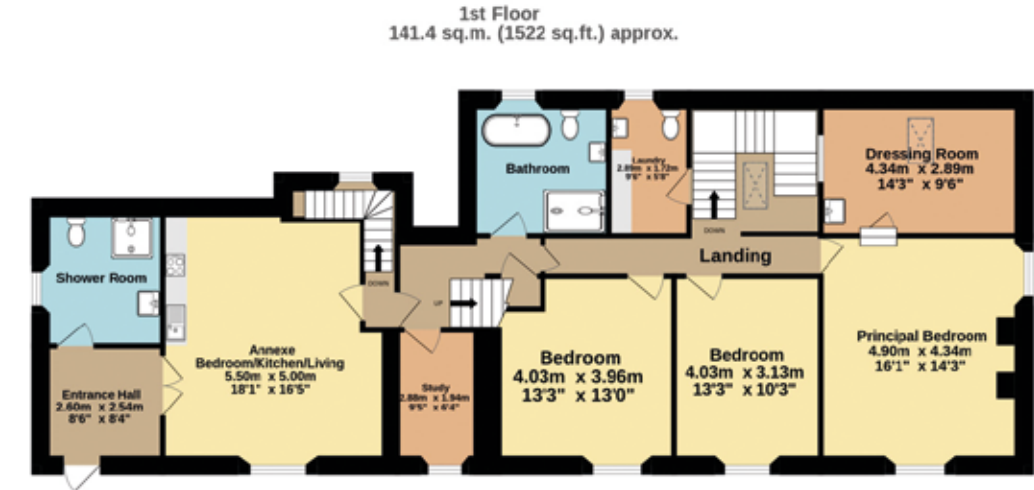
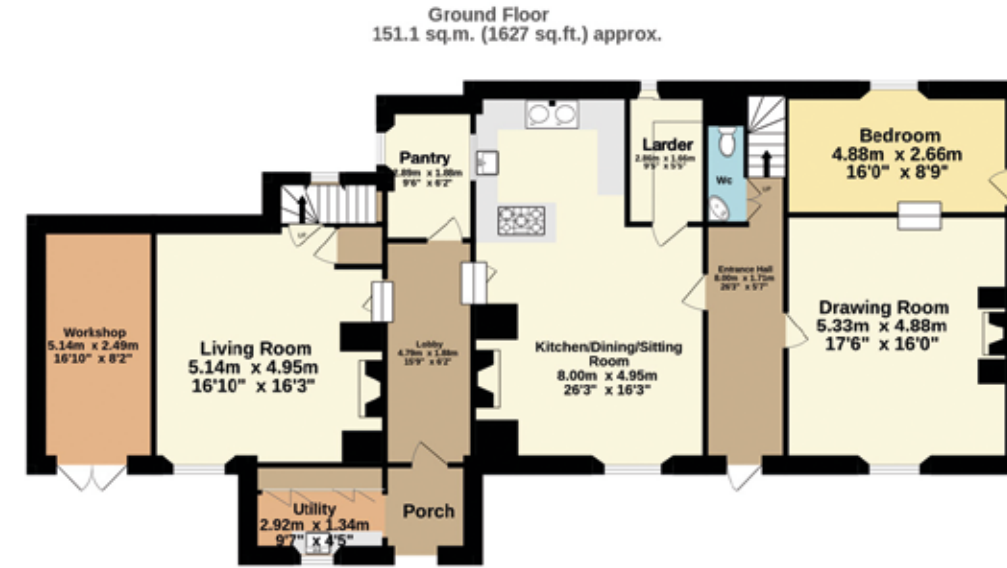
Southcombe House is an exceptional six bedroom Dartmoor farmhouse, with the option for mixed generational living or rental opportunity, that combines historical charm with modern comfort. The original part of the property dates back to the early 16th century, with a Georgian extension that features elegant large sash windows which provide plenty of natural light and far-reaching views over the village and surrounding impressive rugged ‘tors’. The entrance is spacious and features a stone porch with a useful Boot Room and traditional Devon cross passage laid with granite flagstones. This leads to a generous open-plan kitchen and dining room two attractive reception rooms creating a relaxing space for entertaining and family gatherings. There are also two offices with good Wifi connection, setting up Southcombe House well for working from home. The property also includes an Airbnb rental known as The Apiary, which generates a useful income over £20,000 a year but could also work for multigenerational living. This space features an attractive vaulted beamed ceiling, a handmade kitchen, a comfortable bathroom, and a private entrance with parking and an electric charging point.







- Reception/Kitchen
- Bedroom
- Bathroom
- Circulation
- Utility/Storage/Outbuildings
- Outside



Approximate Gross Internal Area  
344.5 sq m (3708 sq ft)

This plan is for layout guidance only. Not drawn to scale unless stated. Windows and door openings are approximate. Whilst every care is taken in the preparation of this plan, please check all dimensions, shapes and compass bearings before making any decisions reliant upon them.





Outside there is a wonderfully productive walled kitchen garden, framed with richly planted herbaceous borders. The grounds offer a large lawned area, a fruit cage, chicken run, small orchard, polytunnel, and a tractor shed. The property is well set up for equestrian use with stables and easy access to stunning Hamel Down and beyond. In addition a key special feature of Southcombe House is its outstanding four acre wildflower meadow, home to rare wild orchids and a variety of native wildflowers, previously featured in national publications and opened to the public for over 20 years as part of The National Garden Scheme.

This property is not just a home but offers a superb lifestyle opportunity, offering a harmonious blend of historical significance, modern amenities, and natural beauty with easy access to the Moor.





I would be delighted  
to tell you more.

**Mark Proctor**  
01392 423111  
mark.proctor@knightfrank.com

**Knight Frank Exeter**  
19 Southernhay East, Exeter  
EX1 1QD

knightfrank.co.uk

Your partners in property

1. Particulars: These particulars are not an offer or contract, nor part of one. You should not rely on statements given by Knight Frank in the particulars, by word of mouth or in writing ("information") as being factually accurate about the property, its condition or its value. Neither Knight Frank nor any joint agent has any authority to make any representations about the property, and accordingly any information given is entirely without responsibility on the part of Knight Frank. 2. Material Information: Please note that the material information is provided to Knight Frank by third parties and is provided here as a guide only. While Knight Frank has taken steps to verify this information, we advise you to confirm the details of any such material information prior to any offer being submitted. If we are informed of changes to this information by the seller or another third party, we will use reasonable endeavours to update this as soon as practical. 3. Photos, Videos etc: The photographs, property videos and virtual viewings etc. show only certain parts of the property as they appeared at the time they were taken. Areas, measurements and distances given are approximate only. 4. Regulations etc: Any reference to alterations to, or use of, any part of the property does not mean that any necessary planning, building regulations or other consent has been obtained. A buyer must find out by inspection or in other ways that these matters have been properly dealt with and that all information is correct. 5. Fixtures and fittings: A list of the fitted carpets, curtains, light fittings and other items fixed to the property which are included in the sale (or may be available by separate negotiation) will be provided by the Seller's Solicitors. 6. VAT: The VAT position relating to the property may change without notice. 7. To find out how we process Personal Data, please refer to our Group Privacy Statement and other notices at <https://www.knightfrank.com/legals/privacy-statement>.

Particulars dated April 2025. Photographs and videos dated March 2025 All information is correct at the time of going to print. Knight Frank is the trading name of Knight Frank LLP. Knight Frank LLP is a limited liability partnership registered in England and Wales with registered number OC305934. Our registered office is at 55 Baker Street, London W1U 8AN. We use the term 'partner' to refer to a member of Knight Frank LLP, or an employee or consultant. A list of members names of Knight Frank LLP may be inspected at our registered office. If you do not want us to contact you further about our services then please contact us by either calling 020 3544 0692, email to [marketing.help@knightfrank.com](mailto:marketing.help@knightfrank.com) or post to our UK Residential Marketing Manager at our registered office (above) providing your name and address.