



TOWNSEND

Budleigh Salterton



TOWNSEND, 14 EXMOUTH ROAD BUDLEIGH SALTERTON

An impressive four-bedroom with attractive accommodation,
in a sought-after Budleigh Salterton setting.

			EPC
4	3	4	D
			
2			

Local Authority: East Devon District Council

Council Tax band: G

Tenure: Freehold

Guide price: £1,250,000

LOCATION

The regency seaside town of Budleigh Salterton offers a wealth of amenities, from independent shops on the high street to its flowing brook and well-known pubs and eateries.

The picture postcard villages of Lympstone, Knowle Village and Topsham are within easy reach and offer more extensive amenities with the Cathedral City of Exeter less than 15 miles away.

The East Devon Area of Outstanding Natural Beauty is relatively unspoilt and offers a wide array of leisure activities ranging from sailing, cycling, horse riding and kite surfing in addition to the leisure clubs East Devon Golf Club, Budleigh Cricket Club and the Croquet, Bowling and Tennis Club. The stunning region offers a choice of walking and cycling routes including hiking the 250-million-year-old Jurassic Coast and the mouth of the River Otter. There are multiple renowned sandy beaches nearby for the summer months.

Budleigh Salterton is a World Heritage site and one of East Devon’s most highly regarded coastal locations. Annual events in the town and surrounding villages are world famous and cover its varied history in literary and music festivals.

The rural location belies its excellent transport links with several mainline train stations and convenient road links leading to the A30 and M5 and the wider motorway network with regular flights from Exeter International Airport.

The area offers respected educational facilities within easy reach of the property such as Newton Poppleford Primary School rated ‘Outstanding’ by Ofsted and St Peter’s Church of England Primary School rated ‘Good’. The world-renowned University of Exeter is within 15 miles of the property.

Distances: Exmouth town centre 3.5 miles, Exmouth station 3.7 miles (32 minutes to Exeter St. David’s), M5 Junction 30 8.7 miles, Exeter Airport 10.5 miles (1 hour to London City Airport), Exeter city centre 11.8 miles, Exeter St. David’s station 12.9 miles (2 hours to London Paddington) (All distances and times are approximate).



TOWNSEND

This spacious, flexible four-bedroom detached family home sits in a sought-after position with miles of rolling East Devon countryside on its doorstep. The property features generous, airy reception rooms with attractive, traditional styling throughout, while outside there is a beautifully landscaped garden.

The ground floor has four main reception rooms, each of which provides plenty of space in which to relax or entertain. The main reception is the sitting room, with its dual aspect including a bay window to the front and French doors to the rear, plus wall lighting features and a log burner effect gas fire. Adjoining the sitting room there is a light and airy conservatory with a southwest-facing aspect, which welcomes plenty of sunshine throughout the day and features fitted ceiling blinds.

Additionally, the ground floor has a dining room and garden room. The dining room has an open fireplace and is the ideal space for family meals or entertaining guests, while the garden room provides extended entertaining space and features a handsome brick-built fireplace, fitted with a woodburning stove. Both rooms overlook the rear garden with skylights overhead.

Across the back of the ground level, the 29ft kitchen and breakfast room provides further social space for everyday living. The large kitchen has fitted units to base and wall level, a central island and integrated appliances, while the breakfast area offers space for informal dining.

Upstairs, the spacious first-floor landing leads to four well-presented double bedrooms. These include the generous principal bedroom with its built-in wardrobes and en suite bathroom with a separate shower unit. The second bedroom benefits from an en suite shower room, with the first floor also featuring a family bathroom with a separate corner shower unit.



GARDEN & GROUNDS

The property is set back from the road on a small close where there is access to four properties. A private driveway provides access to Townsend, where there is plenty of parking space in front of the house and further parking and storage in the integrated double garage. There is a private walled garden to the front and side with an area of patio for al fresco dining, and to the rear of the house well-kept lawns with border hedgerows. At the rear, the garden is immaculately landscaped and features three areas of lawn, with well-tended border beds and pathways, as well as various established shrubs, hedgerows and trees. A large, decked area can be accessed from the kitchen and garden room. There is also a timber-framed gazebo and at the end of the garden, a shed offering storage space. Townsend is adjacent to open fields forming part of the Green Wedge, protected from development.



PROPERTY INFORMATION

Services: Mains gas, electricity and water.

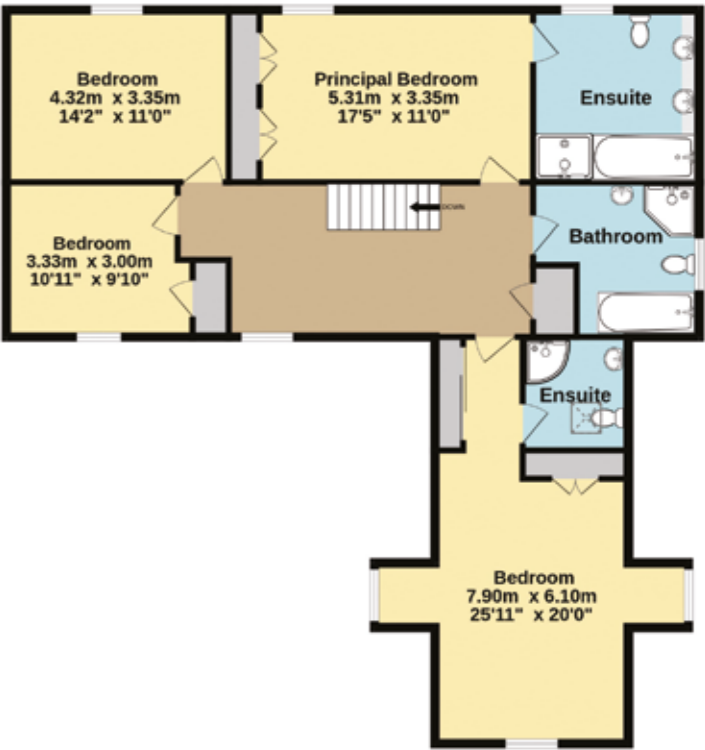
Postcode: EX9 6AQ

what3words: ///surely.factually.hydration

- Reception/Kitchen
- Bedroom
- Bathroom
- Circulation
- Utility/Storage/Outbuildings
- Outside



Ground Floor



First Floor

Approximate Gross Internal Area = 322.6 sq m / 3,472 sq ft

This plan is for layout guidance only. Not drawn to scale unless stated. Windows and door openings are approximate. Whilst every care is taken in the preparation of this plan, please check all dimensions, shapes and compass bearings before making any decisions reliant upon them.

I would be delighted
to tell you more.

Louise Glanville
01392 423111
louise.glanville@knightfrank.com

Knight Frank Exeter
19 Southernhay East, Exeter
EX1 1QD

knightfrank.co.uk

Your partners in property

1. Particulars: These particulars are not an offer or contract, nor part of one. You should not rely on statements given by Knight Frank in the particulars, by word of mouth or in writing ("information") as being factually accurate about the property, its condition or its value. Neither Knight Frank nor any joint agent has any authority to make any representations about the property, and accordingly any information given is entirely without responsibility on the part of Knight Frank. 2. Material Information: Please note that the material information is provided to Knight Frank by third parties and is provided here as a guide only. While Knight Frank has taken steps to verify this information, we advise you to confirm the details of any such material information prior to any offer being submitted. If we are informed of changes to this information by the seller or another third party, we will use reasonable endeavours to update this as soon as practical. 3. Photos, Videos etc: The photographs, property videos and virtual viewings etc. show only certain parts of the property as they appeared at the time they were taken. Areas, measurements and distances given are approximate only. 4. Regulations etc: Any reference to alterations to, or use of, any part of the property does not mean that any necessary planning, building regulations or other consent has been obtained. A buyer must find out by inspection or in other ways that these matters have been properly dealt with and that all information is correct. 5. Fixtures and fittings: A list of the fitted carpets, curtains, light fittings and other items fixed to the property which are included in the sale (or may be available by separate negotiation) will be provided by the Seller's Solicitors. 6. VAT: The VAT position relating to the property may change without notice. 7. To find out how we process Personal Data, please refer to our Group Privacy Statement and other notices at <https://www.knightfrank.com/legals/privacy-statement>.

Particulars dated February 2025. Photographs and videos dated February 2025. All information is correct at the time of going to print. Knight Frank is the trading name of Knight Frank LLP. Knight Frank LLP is a limited liability partnership registered in England and Wales with registered number OC305934. Our registered office is at 55 Baker Street, London W1U 8AN. We use the term 'partner' to refer to a member of Knight Frank LLP, or an employee or consultant. A list of members names of Knight Frank LLP may be inspected at our registered office. If you do not want us to contact you further about our services then please contact us by either calling 020 3544 0692, email to marketing.help@knightfrank.com or post to our UK Residential Marketing Manager at our registered office (above) providing your name and address.