

# 2 Mansion House, Devington Park, Exminster, Devon

---





# A beautifully presented apartment in this stunning Grade II listed building

## Summary of accommodation

**Ground Floor:** Sitting/dining room | Kitchen | Cloakroom | Balcony

**Lower Ground Floor:** Principal bedroom with dressing room and en suite bathroom | One further bedroom | Study | Shower room

**Outside:** Communal gardens | Allocated parking

## Distances

Exeter city centre 4.0 miles, M5 (Jct 30) 3.4 miles

Exeter St. David's station 5.2 miles (2 hours to London Paddington)

Exeter Airport 5.9 miles (1 hour to London City Airport)

(All distances and times are approximate)

## Location

The property is in the popular village of Exminster, to the south of Exeter. The area has easy access to the city centre and the surrounding Exeter suburbs, while also being within easy reach of the beautiful Devon countryside.

Exminster has several everyday amenities, including a post office, a small supermarket, a café and a village pub. Exeter city centre, with its excellent shopping, leisure and cultural facilities, is less than four miles away.

The area has plenty of leisure activities to choose from, with sailing on the River Exe at Starcross, walking on the South West Coastal Path and nearby on Dartmoor. Golf is available nearby at Exminster Golf Centre and Exeter Golf and Country Club at Wear Park. There is also a selection of stunning beaches within 15 miles of the property.



The area offers excellent transport links and Exeter's four mainline train stations are all less than 10 miles away. Trains run regularly to the smaller nearby towns and cities, as well as Bristol, Plymouth and London Paddington. The M5 is just a short drive away, providing links to the national motorway network, while Exeter International Airport, five miles away, offers both local and international flights.

The region is well served by good private and state schools such as St. Michael's CofE Academy, Ide Primary School and St. Leonard's CofE Primary School, all rated 'Outstanding' by Ofsted. Independent schooling can be found at The New School in Exminster, and in Exeter at Exeter School, The Maynard School and Exeter Cathedral School, among others.

## The property

This stylish apartment forms part of Mansion House, a Grade II listed former hospital, dating from the mid-19th century and sitting at the heart of the development. The handsome red-brick building houses several luxury apartments, with this two bedroom, split-level specimen featuring elegant, attractive accommodation with high ceilings and neutral décor throughout.





The apartment is located on the ground level and lower ground level of the building and features a well-presented sitting and dining room on the ground floor. There is also a kitchen fitted with shaker-style units to base and wall level, an integrated double oven, gas hob and extractor hood, dishwasher and washer/dryer, fridge and freezer.

The bedrooms are located on the lower ground floor, as well as a useful study space in the stairwell. The principal bedroom has a walk-through dressing room with built-in storage, as well as an en suite bathroom and French doors opening onto a terrace. There is also a second bedroom, and a separate shower room on the lower ground level and door to an outside storage area.

## Garden and grounds

The apartment has a private balcony area, accessed via a door from the ground floor hallway. The building is set within 11 acres of landscaped grounds, with wellmaintained lawns and terracing, as well as a beautiful pond. The apartment has two allocated parking spaces and there is ample parking at the front of the building and throughout the grounds. The property also benefits from a fully equipped residents gym with shower facilities and an external bike store.

## Services

Mains gas/electric and sewage.

## Directions

Postcode: EX6 8UJ

what3words: ///buddy.nerve.eager

## Property information

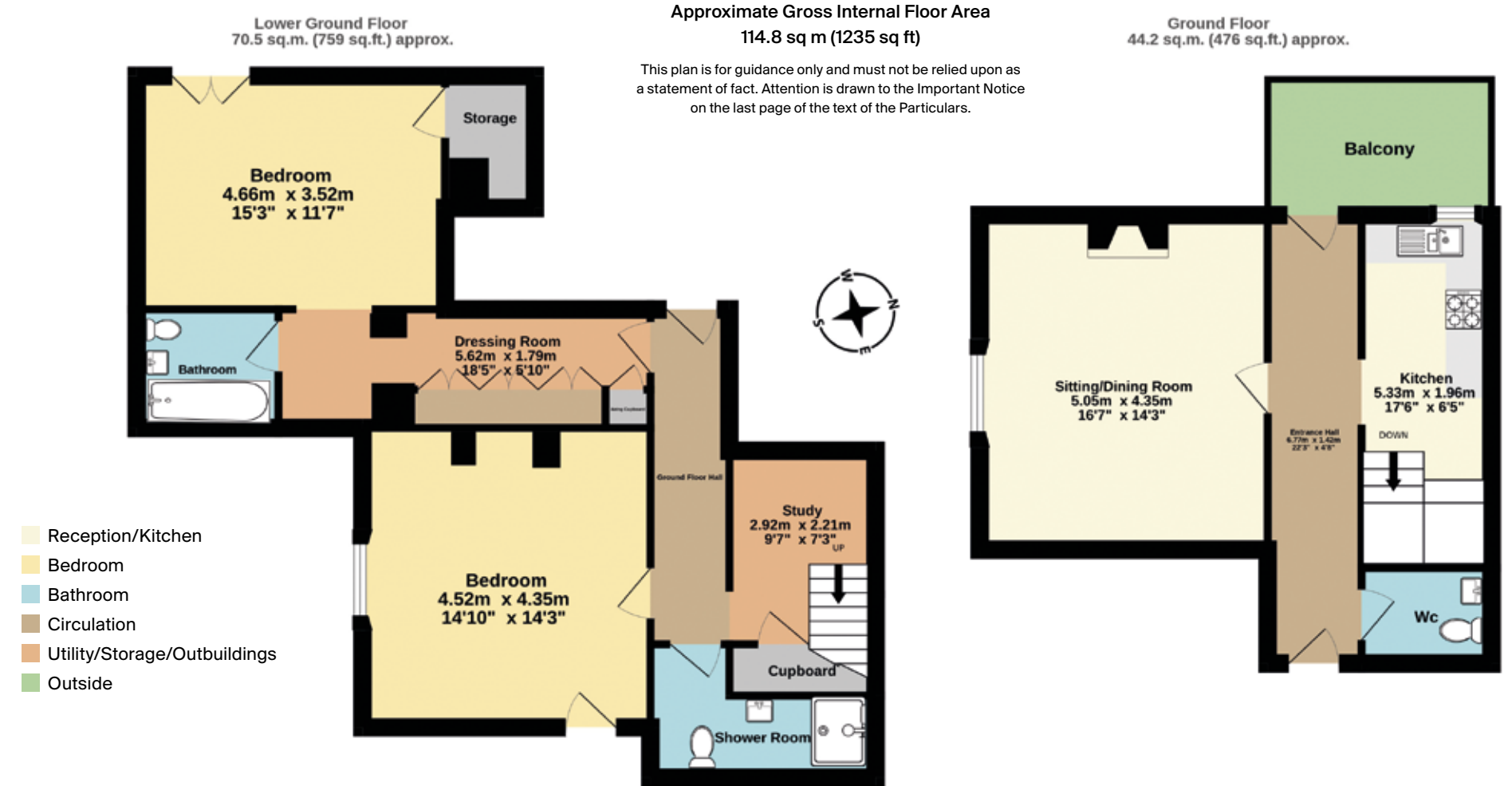
**Tenure:** Leasehold - 999 years from 31 December 2000. 977 years remaining

**Local Authority:** Teignbridge District Council

**Council Tax:** BandD

**EPC Rating:** C

**Guide Price:** £300,000



**Knight Frank Exeter**  
19 Southernhay East

Exeter

EX1 1QD

[knightfrank.co.uk](http://knightfrank.co.uk)

I would be delighted to tell you more

**Louise Glanville**

01392 423111

[louise.glanville@knightfrank.com](mailto:louise.glanville@knightfrank.com)

Fixtures and fittings: A list of the fitted carpets, curtains, light fittings and other items fixed to the property which are included in the sale (or may be available by separate negotiation) will be provided by the Seller's Solicitors.

Important Notice: 1. Particulars: These particulars are not an offer or contract, nor part of one. You should not rely on statements by Knight Frank LLP in the particulars or by word of mouth or in writing ("information") as being factually accurate about the property, its condition or its value. Neither Knight Frank LLP nor any joint agent has any authority to make any representations about the property, and accordingly any information given is entirely without responsibility on the part of the agents, seller(s) or lessor(s). 2. Photos, Videos etc: The photographs, property videos and virtual viewings etc. show only certain parts of the property as they appeared at the time they were taken. Areas, measurements and distances given are approximate only. 3. Regulations etc: Any reference to alterations to, or use of, any part of the property does not mean that any necessary planning, building regulations or other consent has been obtained. A buyer or lessee must find out by inspection or in other ways that these matters have been properly dealt with and that all information is correct. 4. VAT: The VAT position relating to the property may change without notice. 5. To find out how we process Personal Data, please refer to our Group Privacy Statement and other notices at <https://www.knightfrank.com/legals/privacy-statement>.

Particulars dated September 2024. Photographs and videos dated August 2024.

All information is correct at the time of going to print. Knight Frank is the trading name of Knight Frank LLP. Knight Frank LLP is a limited liability partnership registered in England and Wales with registered number OC305934. Our registered office is at 55 Baker Street, London W1U 8AN. We use the term 'partner' to refer to a member of Knight Frank LLP, or an employee or consultant. A list of members names of Knight Frank LLP may be inspected at our registered office. If you do not want us to contact you further about our services then please contact us by either calling 020 3544 0692, email to [marketing.help@knightfrank.com](mailto:marketing.help@knightfrank.com) or post to our UK Residential Marketing Manager at our registered office (above) providing your name and address. Brochure by [wordperfectprint.com](http://wordperfectprint.com)



PRODUCED FROM SUSTAINABLE SOURCES



