

Crows Nest, Longdown, Devon





A stylishly appointed detached house with **stunning elevated views**, in the peaceful village of Longdown.



6



4



3



Double

EPC

C

Guide Price

£950,000

Tenure

Freehold

Local Authority

Teignbridge District Council

Council Tax

Band G



The property

Crows Nest is a splendid, detached family home with stylish accommodation, set in a peaceful location in the small village of Longdown and with stunning views across the surrounding woodland and countryside. There are up to six double bedrooms and comfortable living space arranged across three levels, with balconies making the most of the magnificent surroundings.

The main reception room is the sitting room, located on the first floor, with access to a south-facing balcony looking out across the surrounding landscape. There is a woodburning stove, a bar and a dual aspect, including sliding glass doors opening onto the balcony. Adjoining the sitting room is a dining area with space for a family dining table.

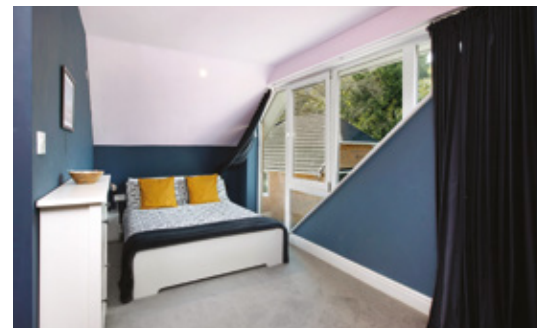
The kitchen and breakfast room is well-proportioned and fitted with contemporary wooden units to base and wall level, along with integrated appliances including a Bosch double oven, induction hob and extractor hood. The room also offers space for a breakfast table for informal dining.







Three of the bedrooms are located on the ground floor, including one with an en suite shower room and its own balcony. The first floor provides a study, which could be used as a guest bedroom, while the second floor has two further bedrooms including the generous principal bedroom with its en suite bathroom. All the bedrooms have built-in storage with one further bedroom featuring an en suite shower room. There is a family bathroom and a utility room on the ground floor, while the first floor has a further shower room.



Gardens and grounds

At the entrance to the property, a five-bar wooden gate provides access to the driveway, which leads to the detached garage and a spacious parking area at the front of the house. The terraced gardens include a timber-framed summer house, a patio area and split-level lawns, with border hedgerows and a variety of shrubs and mature trees.

Location

The village of Longdown lies in a beautiful rural setting, just three miles from the centre of Exeter, providing the best of country living with convenient access to all the city's amenities and transport links.

There is a local pub in the village as well as a village hall, while everyday amenities can be found in the south-west of Exeter, with local shops on Dunsford Road and further shops and facilities in the St Thomas area. The centre of the historic cathedral city is just three miles from the property and provides further shopping on the Historic Quayside with the nearby cities of Plymouth and Bristol offering more extensive choices.

The area has plenty of leisure activities to choose from, with first-class facilities found in Exeter, horse riding, sailing, hiking the Jurassic Coast, fishing as well as stunning walking and cycling on the nearby Dartmoor National Park and access to several sandy beaches within easy reach of the property.

Exeter offers excellent transport links and the city's four mainline train stations are all within five miles from the property. Trains run regularly to the smaller nearby cities as well as Bristol, Plymouth and London Paddington. The A30 and M5 lead to the national motorway network providing convenient road links with Exeter International Airport, offering both local and international flights.

The region is well served by good private and state schools such as Ide Primary School, Exwick Heights Primary School and for secondary, Exeter College, all of which are rated outstanding by Ofsted. There are also several renowned independents, including St Wilfrid's School and Exeter Cathedral School.





Services

Oil-fired central heating. Private drainage (septic tank).
Mains electricity and water.

Directions (EX6 7SP)

what3words: droplet.allies.enjoy

From Exeter follow the B3121 into the village of Longdown. Take the right-hand turning onto Chapel Hill signposted to the village hall and Tedburn St Mary. Continue up the hill and after a short distance, just past the entrance to "Warrendown", the shared driveway leading to Crows Nest will be found on the left-hand side, signposted on the brick wall.





Knight Frank Exeter
 19 Southernhay East
 Exeter
 EX1 1QD
knightfrank.co.uk

I would be delighted to tell you more

Louise Glanville
 01392 423111
louise.glanville@knightfrank.com



Fixtures and fittings: A list of the fitted carpets, curtains, light fittings and other items fixed to the property which are included in the sale (or may be available by separate negotiation) will be provided by the Seller's Solicitors.

Important Notice: 1. Particulars: These particulars are not an offer or contract, nor part of one. You should not rely on statements by Knight Frank LLP in the particulars or by word of mouth or in writing ("information") as being factually accurate about the property, its condition or its value. Neither Knight Frank LLP nor any joint agent has any authority to make any representations about the property, and accordingly any information given is entirely without responsibility on the part of the agents, seller(s) or lessor(s). 2. Photos, Videos etc: The photographs, property videos and virtual viewings etc. show only certain parts of the property as they appeared at the time they were taken. Areas, measurements and distances given are approximate only. 3. Regulations etc: Any reference to alterations to, or use of, any part of the property does not mean that any necessary planning, building regulations or other consent has been obtained. A buyer or lessee must find out by inspection or in other ways that these matters have been properly dealt with and that all information is correct. 4. VAT: The VAT position relating to the property may change without notice. 5. To find out how we process Personal Data, please refer to our Group Privacy Statement and other notices at <https://www.knightfrank.com/legals/privacy-statement>.

Particulars dated May 2023. Photographs and videos dated April 2023.

All information is correct at the time of going to print. Knight Frank is the trading name of Knight Frank LLP. Knight Frank LLP is a limited liability partnership registered in England and Wales with registered number OC305934. Our registered office is at 55 Baker Street, London W1U 8AN. We use the term 'partner' to refer to a member of Knight Frank LLP, or an employee or consultant. A list of members names of Knight Frank LLP may be inspected at our registered office. If you do not want us to contact you further about our services then please contact us by either calling 020 3544 0692, email to marketing.help@knightfrank.com or post to our UK Residential Marketing Manager at our registered office (above) providing your name and address. Brochure by wordperfectprint.com