

Brook House, Dittisham, Dartmouth



A detached stone built house, sitting in grounds of about 1 acre, **including mature gardens, wild meadow, pond and ample parking.** On the edge of The Ham and the River Dart, and an easy walk to the village pubs and shop.

Distances

Dartmouth 6 miles, Totnes (with main line rail link to London) 8 miles
Blackpool Sands 7 miles (All distances and times are approximate)

Summary of accommodation

Ground Floor: Entrance hall | Three double bedrooms, one with an en suite shower room | Family bathroom | Utility room | Boiler room | Workshop

First Floor: Front door through to entrance porch | Galleried entrance hall
Double length living room | Dining room | Kitchen | Guest cloakroom

Gardens and grounds of about one acre, including wild meadow, gardens, pond and terraces

Gross Internal floor Area 1,796 sq ft (167 sq m)

In all about 1.1 acres

NB. There is an orchard of about 1/3 acre with double store/garage, available by separate negotiation.





The location

Dittisham is a quintessential 'chocolate box' village, with a wonderful mix of cottages and thatched houses, quaint lanes and a large village green known as The Ham, which is situated on the bank of The River Dart. Dittisham remains one of the most sought-after villages in the South Hams, not just because of its charm, but because it is a vibrant community with two village pubs, post office/general store, a waterside cafe and a popular sailing club. Dartmouth is about 6 miles distant in the car or about 20 minutes down river, and offers an array of shops, boutiques, pubs and restaurants, as well as a cinema, indoor and outdoor swimming pools, three supermarkets, a health centre and a good selection of schools.

Totnes is about 8 miles distant and offers a mainline rail link to London Paddington with a journey time of about 2 hours and 40 minutes. The A38, which in turn leads to the M5, is about 15 miles distant.

The property

Brook House is a pretty stone built house situated on the edge of The Ham in Dittisham, in the heart of the village. The Ham is a wonderful riverside park which also offers a public slipway into the River Dart, and this is a short level access from the driveway at Brook House.





The house, which was built in the early eighties, offers spacious accommodation arranged over two floors. The reverse level living takes full advantage of the wonderful views on offer. Stone steps rise from the terrace to the front door which in turn opens into an entrance hall with guest cloakroom and a galleried landing beyond. There are two lovely reception rooms, including a dining room and a sitting room and a bright kitchen/ breakfast room on this level.

The kitchen/breakfast room is fitted with a range of units, double oven, hob and dishwasher and offers gorgeous views of the River Dart. The sitting room is a double length reception room, again with wonderful views, a wood burning stove set in a stone inglenook fireplace and double doors leading to a decked balcony.

Stairs descend from the galleried landing to the lower ground floor which comprises three large double bedrooms, including the principal bedroom with an en suite bathroom and double doors opening on to the adjoining terrace. In addition, there is a family bathroom, utility room and boiler room with external door.



Gardens

Outside is possibly the jewel in the crown for this lovely home. The grounds are approached through a five-bar gate off Ham Lane and the drive then extends through the meadow beyond the natural spring fed pond. There is a wonderful selection of trees and mature shrubs and at the top, ample parking for cars and boats. A gate provides access across the path and into Brook House.

Services

Mains water and electricity. Private drainage, LPG central heating via radiators.

Fixtures and fittings

All items usually known as owners' fixtures and fittings, whether mentioned or not in these sale particulars are excluded from the sale but may be available by separate negotiation. Such items include all fitted carpets, curtains, light fittings, domestic electrical items, garden equipment, statuary, and machinery.



Viewing

Viewing is strictly by prior appointment with the agents Knight Frank.

Directions (TQ6 0HB)

Proceed on the A3122 towards Dartmouth; at The Sportsmans Arms turn towards Dittisham. Once in the village, pass The Red Lion pub and turn immediate right into Riverside Road. Take the next right into Ham Lane which leads to the Ham Car Park. At the bottom of the lane on the right, you will see the five bar gate for the drive to Brook House.

What3words: stung.hinted.ordering for the driveway entrance if in a car
panther.negotiators.codes if on foot and walking to the house

Property information

Tenure: Freehold

Local Authority: South Hams District Council 01803 861234

Council Tax: Band G

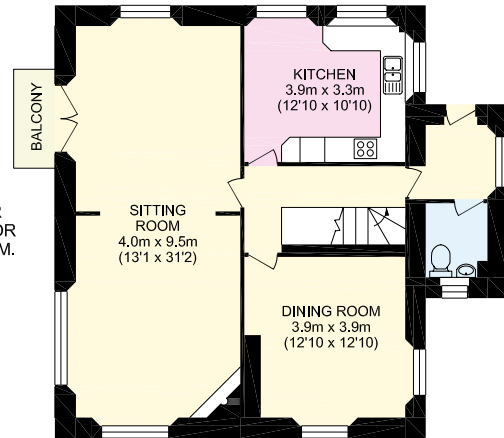
EPC Rating: E

Offers in Excess of £1,250,000

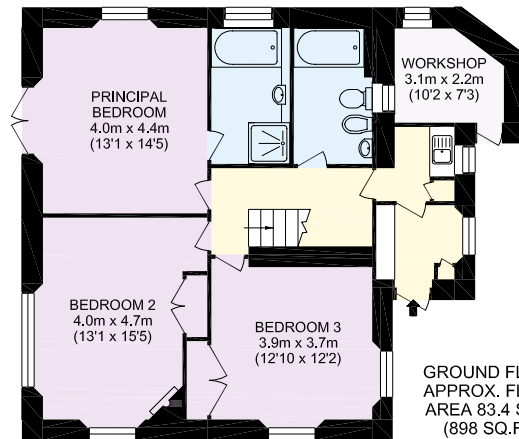
Approximate Gross Internal Floor Area
166.8 sq m - (1796 sq ft)
(Excluding Workshop and Garden Shed)

This plan is for guidance only and must not be relied upon as a statement of fact. Attention is drawn to the Important Notice on the last page of the text of the Particulars.

FIRST FLOOR
 APPROX. FLOOR
 AREA 83.4 SQ.M.
 (898 SQ.FT.)



GARDEN
 SHED 1.6m
 x 1.1m (5'3"
 x 3'7")



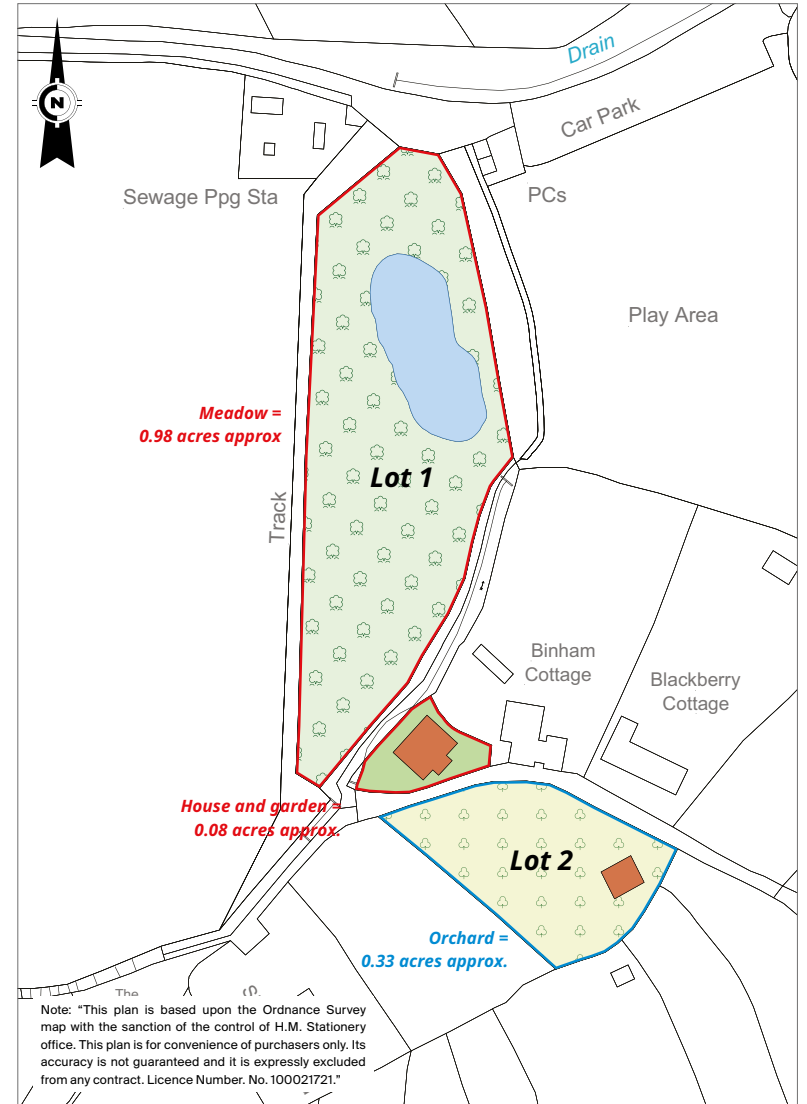
GROUND FLOOR
 APPROX. FLOOR
 AREA 83.4 SQ.M.
 (898 SQ.FT.)

- Reception
- Bedroom
- Bathroom
- Kitchen/Utility
- Storage
- Outside

Knight Frank Exeter
 19 Southernhay East
 Exeter
 EX1 1QD
knightfrank.co.uk

I would be delighted to tell you more

Sarah-Jane Bingham-Chick
 01392 423111
sj.chick@knightfrank.com



Note: "This plan is based upon the Ordnance Survey map with the sanction of the control of H.M. Stationery office. This plan is for convenience of purchasers only. Its accuracy is not guaranteed and it is expressly excluded from any contract. Licence Number. No.100021721."



Fixtures and fittings: A list of the fitted carpets, curtains, light fittings and other items fixed to the property which are included in the sale (or may be available by separate negotiation) will be provided by the Seller's Solicitors.

Important Notice: 1. Particulars: These particulars are not an offer or contract, nor part of one. You should not rely on statements by Knight Frank LLP in the particulars or by word of mouth or in writing ("information") as being factually accurate about the property, its condition or its value. Neither Knight Frank LLP nor any joint agent has any authority to make any representations about the property, and accordingly any information given is entirely without responsibility on the part of the agents, seller(s) or lessor(s). 2. Photos, Videos etc: The photographs, property videos and virtual viewings etc. show only certain parts of the property as they appeared at the time they were taken. Areas, measurements and distances given are approximate only. 3. Regulations etc: Any reference to alterations to, or use of, any part of the property does not mean that any necessary planning, building regulations or other consent has been obtained. A buyer or lessee must find out by inspection or in other ways that these matters have been properly dealt with and that all information is correct. 4. VAT: The VAT position relating to the property may change without notice. 5. To find out how we process Personal Data, please refer to our Group Privacy Statement and other notices at <https://www.knightfrank.com/legals/privacy-statement>.

Particulars dated April 2024. Photographs and videos dated August 2023.

All information is correct at the time of going to print. Knight Frank is the trading name of Knight Frank LLP. Knight Frank LLP is a limited liability partnership registered in England and Wales with registered number OC305934. Our registered office is at 55 Baker Street, London W1U 8AN. We use the term 'partner' to refer to a member of Knight Frank LLP, or an employee or consultant. A list of members names of Knight Frank LLP may be inspected at our registered office. If you do not want us to contact you further about our services then please contact us by either calling 020 3544 0692, email to marketing.help@knightfrank.com or post to our UK Residential Marketing Manager at our registered office (above) providing your name and address. Brochure by wordperfectprint.com