

Tregole, St. Endellion, Cornwall







A lovely family home offering **the most fabulous blend of equestrian and coastal lifestyles**. It is close to some of the most popular holiday destinations and beaches along the north Cornish coast and lies on the edge of a thriving all-year-around community.

Summary of accommodation

Utility room | Wet room | Kitchen/breakfast room | Living room | Sitting room | Conservatory

Five bedrooms (one with an en suite bathroom) | Family bathroom

Extensive parking | Terrace | Mature gardens | Paddocks

Stables and tack room | Further outbuildings

In all about 6.21 acres (2.5 Ha)

Distances

Port Gaverne 3.1 miles, Port Isaac 1.8 miles, Rock 5.6 miles, Wadebridge 7 miles

(All distances and times are approximate)



Knight Frank Exeter
19 Southernhay East
Exeter
EX1 1QD
[knightfrank.co.uk](https://www.knightfrank.co.uk)

Sarah-Jane Bingham-Chick
01392 423111
sj.chick@knightfrank.com

The property

Tregole is a lovely family home situated in a commanding position on high ground on the edge of the popular village of St Endellion and enjoys far-reaching, panoramic views out across the rolling hills to the north Cornish coastline. In all the property extends to about 6.21 acres (in two Lots) and consists of mature gardens, pasture, stables and tack room, further outbuildings and a five bedroom house. The property is close to both Port Isaac and Port Quinn and only a short drive from Polzeath, Trebetherick and Rock. This is the first time this property has been on the market in 24 years. It lies within an Area of Outstanding Natural Beauty.

The property has its own private driveway that leads round to ample parking for plenty of vehicles, boat trailers or horseboxes. The rear door leads into the rear hallway, off which are a wet room, utility cupboard and airing cupboard. This leads into the kitchen/breakfast room that has a Redfyre oil-fired range oven with LPG gas hobs. There are a built-in dishwasher and fridge and French doors lead out to the terrace, lawn and parking area. Beyond the kitchen/breakfast room is the living room that has a multifuel stove and a window looking out over the grass lawn and childproof front garden. Off the living room is a south-facing sun lounge with doors leading out to the front lawn. Also off the kitchen is a corridor with two bedrooms and a family bathroom. The bathroom has a whirlpool bath and a shower. One of the bedrooms is currently used as an office and has a door leading out to the garden and pond. Also off the living room is a hallway that leads through to the third downstairs bedroom, front doorway and the sitting room. The sitting room has double doors off the corridor and a wood burner. Double doors lead out to the garden and parking area and the sitting room enjoys fabulous west facing views out to the Cornish coastline with Pentire Head and The Rumps in the distance.

Stairs lead up from the living room to the first-floor landing off which are two bedrooms. One of the bedrooms has an en suite bathroom and extensive views inland, the other has an ensuite toilet and washbasin and enjoys views out across the countryside to the coastline in the distance.





Gardens, grounds and land

Outside and beyond the parking area are a series of outbuildings including a tractor shed, hay barn, storeroom and workshop. The workshop is also a surf store. Beyond these outbuildings is the stable block and hardstanding that includes three loose boxes and a tack room. Beside the driveway and garden is a paddock with post and rail fencing and a water supply.

The pasture is a particularly special feature of the property and both fields have water and are stock proof with post and rail fencing. At the far end of the paddocks is a semi-derelict barn that, subject to gaining the necessary planning consents, could be converted into further ancillary accommodation. Both paddocks have separate vehicle access over the neighbouring agricultural fields to a lane leading down to Trelights and on to Port Quinn.

North Cornwall

The property is a short walk from both the hamlet of Trelights and the village of St Endellion church. It is about a mile's walk from the sea. Tregole lies above Port Isaac in an Area of Outstanding Natural Beauty. St Endellion has a beautiful 15th century church with wonderful acoustics and has hosted the internationally acclaimed St Endellion Music festivals.

The nearest amenities are located in Port Isaac, an historic, picturesque and quintessentially Cornish fishing village about 2 miles away. It has a friendly, all year round thriving community and has a wide range of facilities and amenities for day to day living including a grocery store, daily fish market, an array of cafés and seafood restaurants, a doctor's surgery/pharmacy and a primary school. The excellent restaurants include two of Nathan Outlaws establishments where he holds three Michelin stars. This idyllic Cornish fishing village has steadily gained in popularity over the years due to it being the stage for various film and television series, the most notable being ITVs Doc Martin starring Martin Clunes where its known as Port Wenn.







More comprehensive facilities can be found in the market town of Wadebridge, with its range of boutique shops, public houses and restaurants combined with supermarket and well known high street retailers. Primary and secondary schools are well regarded and Wadebridge is conveniently located just off the A39 Atlantic Highway.

The breath-taking surfing beach of Polzeath is just 4 miles away, and within easy reach of Daymer Bay and the water sports haven of Rock. Tregole has easy access to the spectacular SW Coastal path.

Services

Mains water and electricity. Private drainage. Oil-fired heating
Broadband - Fibre.

Fixtures and fittings

All those items regarded as tenant's fixtures and fittings, together with the fitted carpets, curtains and light fittings, are specifically excluded from the sale. However, certain items may be available by separate negotiation.



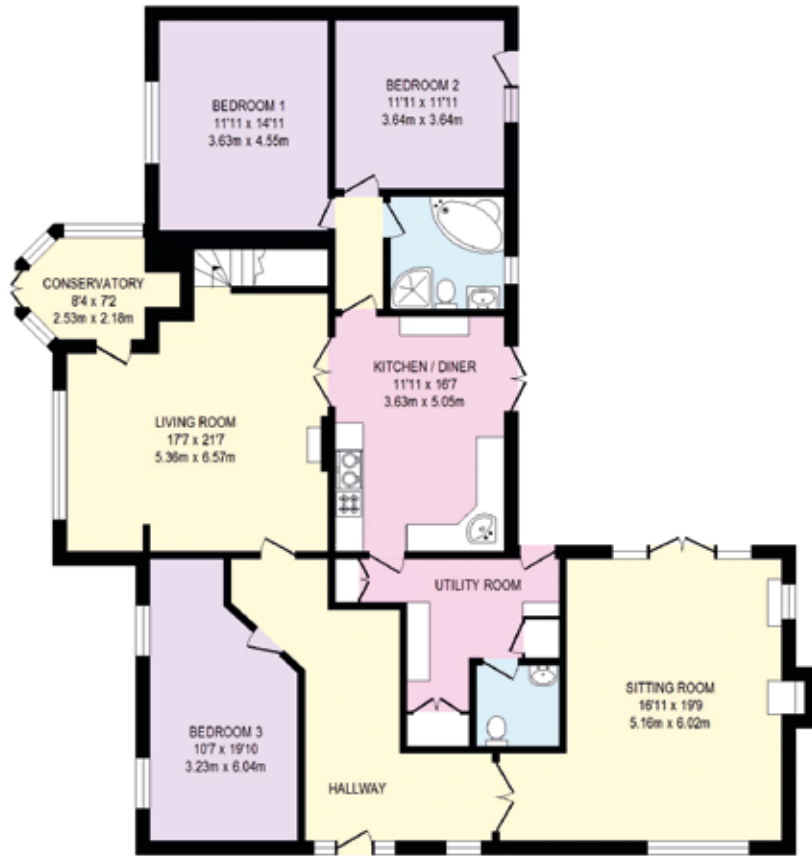
Approximate Gross Internal Floor Area

Total area excluding outbuildings:

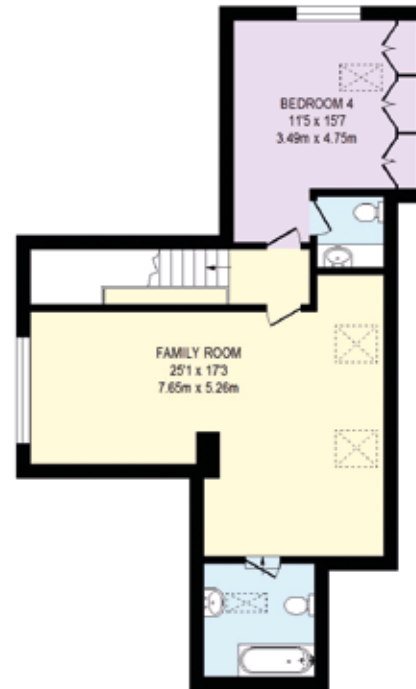
250.8 Sq.M. - (2699 Sq.ft.)

This plan is for guidance only and must not be relied upon as a statement of fact. Attention is drawn to the Important Notice on the last page of the text of the Particulars.

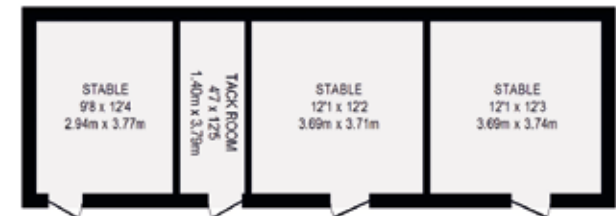
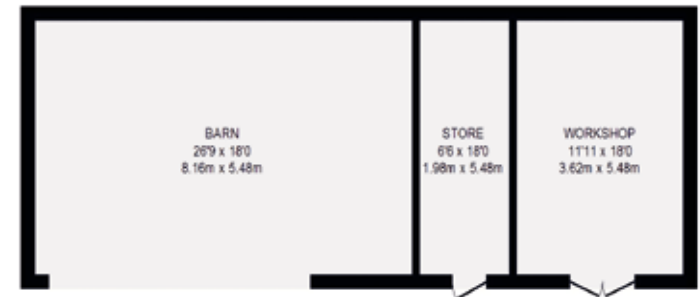
- Reception
- Bedroom
- Bathroom
- Kitchen/Utility
- Storage
- Outside



**GROUND FLOOR
APPROX. FLOOR
AREA 182.4 SQ.M.
(1996 SQ.FT.)**



**FIRST FLOOR
APPROX. FLOOR
AREA 68.4 SQ.M.
(736 SQ.FT.)**



Property information

Tenure: Freehold

Local Authority: Cornwall County Council

Council Tax: Band D

EPC: D

Offers over £1,000,000

Viewing

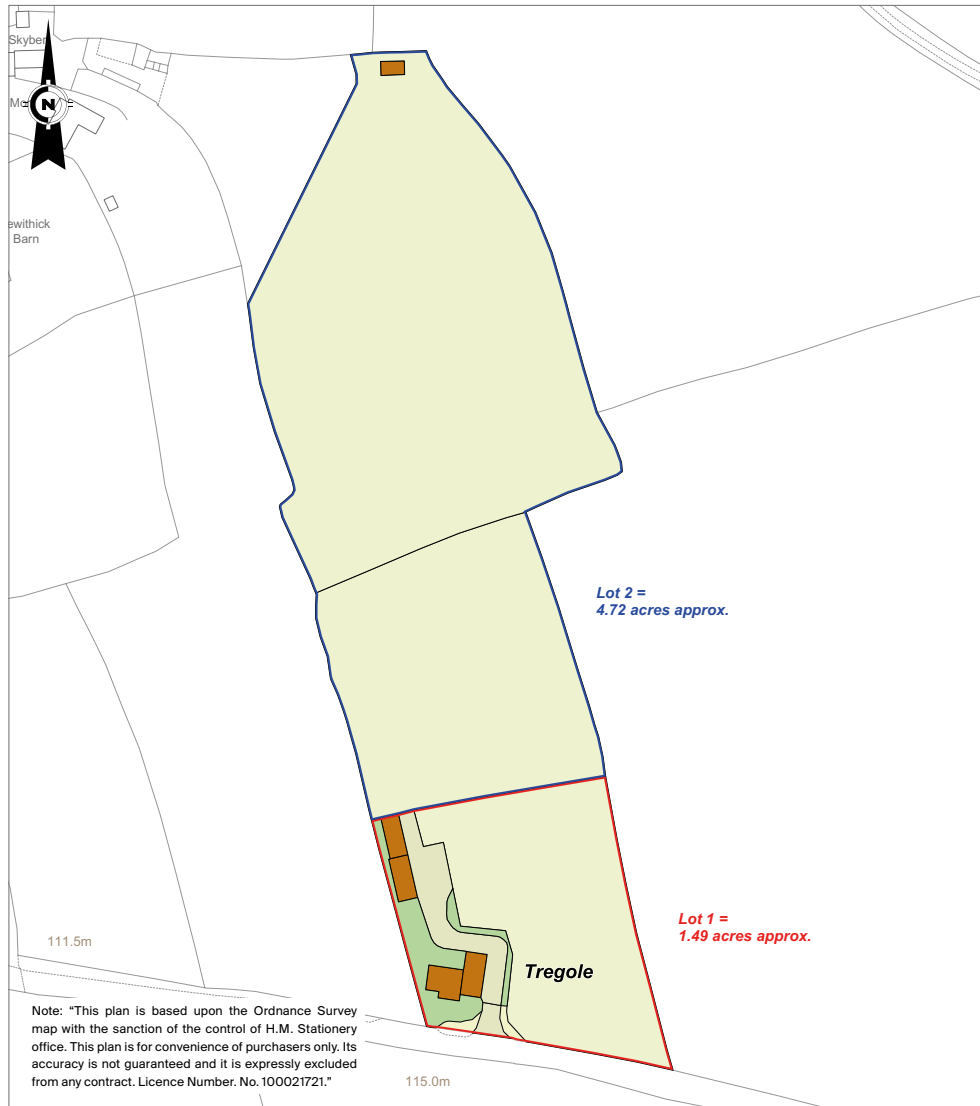
Viewing is strictly by prior appointment with the Sole Agents
Knight Frank LLP.

Directions

(PL29 3TP – this postcode does not take you to the property)

On the Pendoggett Road B3314 between Delabole and Rock, pass through Pendoggett and St Endellion towards Rock. Leave the St Endellion church on your right. Tregole will be the fourth property on the right.





Fixtures and fittings: A list of the fitted carpets, curtains, light fittings and other items fixed to the property which are included in the sale (or may be available by separate negotiation) will be provided by the Seller's Solicitors.

Important Notice: 1. Particulars: These particulars are not an offer or contract, nor part of one. You should not rely on statements by Knight Frank LLP in the particulars or by word of mouth or in writing ("information") as being factually accurate about the property, its condition or its value. Neither Knight Frank LLP nor any joint agent has any authority to make any representations about the property, and accordingly any information given is entirely without responsibility on the part of the agents, seller(s) or lessor(s). 2. Photos, Videos etc: The photographs, property videos and virtual viewings etc. show only certain parts of the property as they appeared at the time they were taken. Areas, measurements and distances given are approximate only. 3. Regulations etc: Any reference to alterations to, or use of, any part of the property does not mean that any necessary planning, building regulations or other consent has been obtained. A buyer or lessee must find out by inspection or in other ways that these matters have been properly dealt with and that all information is correct. 4. VAT: The VAT position relating to the property may change without notice. 5. To find out how we process Personal Data, please refer to our Group Privacy Statement and other notices at <https://www.knightfrank.com/legals/privacy-statement>. Particulars dated May 2023. Photographs and videos dated August 2022.

All information is correct at the time of going to print. Knight Frank is the trading name of Knight Frank LLP. Knight Frank LLP is a limited liability partnership registered in England and Wales with registered number OC305934. Our registered office is at 55 Baker Street, London W1U 8AN. We use the term 'partner' to refer to a member of Knight Frank LLP, or an employee or consultant. A list of members names of Knight Frank LLP may be inspected at our registered office. If you do not want us to contact you further about our services then please contact us by either calling 020 3544 0692, email to marketing.help@knightfrank.com or post to our UK Residential Marketing Manager at our registered office (above) providing your name and address. Brochure by wordperfectprint.com

