



## LANE END COTTAGES

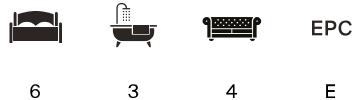
Newnham, Henley-in-Arden, B95 6DU





# A BEAUTIFUL AND CHARMING DETACHED TIMBERED SIX BEDROOM COTTAGE FULL OF CHARACTER

In a peaceful location in a sought-after hamlet with excellent access to Stratford-upon-Avon.



What3words: ///tycoons.attitudes.corkscrew

Tenure: Freehold

Local Authority: Stratford on Avon District Council Telephone: 01789 267575

Council Tax Band: G

Viewing: By prior appointment only with the agents

Services: Mains water and electricity are connected to the property. Electric heating. Private drainage. Broadband fibre to premises.  
Fixtures and fittings: Fitted carpets, curtains, and light fittings will be included in the sale. The vendors' solicitor will provide a fixtures and fittings form listing items included and excluded from the sale, and those available to purchase by separate negotiation.



# ACCOMMODATION AND AMENITIES

Entrance hall, cloakroom, drawing room with library area, dining room, kitchen/breakfast room, garden room/porch, snug, sitting room, utility room, ground floor shower room. 2 landings, 6 bedrooms, 2 en suite bathrooms approaching 3,000 square feet, garage, mature garden, and part-walled vegetable garden

## SITUATION

Lane End Cottages is situated on the edge of the small, peaceful hamlet of Newnham towards the end of a no-through lane, midway between Stratford-upon-Avon and Henley-in-Arden in delightful Warwickshire countryside.

Newnham consists of two farms and a number of cottages, in a wonderful, tranquil setting. Facilities for day-to-day requirements can be found in Henley-in-Arden, an attractive market town with a good range of shopping and recreational facilities, including doctor's surgery, veterinary surgery, fine parish church, public houses, restaurants, primary and secondary schools. In the area, there are state, grammar, and private schools to suit most requirements, including Warwick Boys School, Stratford Boys and Girls Grammar Schools, and the Croft Prep School close by.

The property is well located for access to the motorway network, with the M40, M42, and M5 easily accessible. Warwick Parkway Station provides access to London Marylebone to the south and Birmingham to the north. Birmingham also includes an international airport. Stratford-upon Avon, with its Shakespearean heritage and theatres is approximately 6 miles away. There are golf courses at Stratford-upon-Avon and Warwick, and racing at Stratford-upon-Avon, Warwick, and Cheltenham.

Henley-in-Arden 5 miles, Stratford-upon-Avon 6 miles, M40 (J15) 13 miles, Warwick Parkway 14 miles (trains to London Marylebone from 69 minutes), Leamington Spa 14 miles, Birmingham International Airport 19 miles, Birmingham 21 miles, Coventry 23 miles (distances and time approximate)











## DESCRIPTION

Formerly a row of cottages, Lane End Cottages is built of mellow brick under a clay tile roof and is not listed, but incorporates wonderful period elements, including pretty south-facing dormer windows, inglenook fireplaces, one with a wood-burning stove, exposed timberwork and lias stonework inside, antique doors and flagstone floors to the drawing room and dining room. Formerly the home of the highly regarded Olivier Award-winning actress Barbara Leigh-Hunt and Richard Pasco, one of the finest classical actors of his generation.

There are diamond-paned leaded light windows with secondary glazing. The property has ample, versatile accommodation with four reception rooms, and with a ground-floor shower room, one can be used as a ground-floor bedroom, if desired. The kitchen is fitted with appliances, and quarry tiled floor, and a breakfast area with bench seating. There are ample cupboards and bookshelves throughout the cottage. Off one staircase are four bedrooms and a bathroom, with the principal bedroom, bathroom, and bedroom six off the second staircase.









## GARDENS AND GROUNDS

Situated behind a mature south-facing garden lawned, with a summerhouse and mature fruit and ornamental trees and shrubs, with herbaceous borders, and a flagstone patio and canopied well with traditional winding rope and bucket, with a brick wall to the lane, and with a graveled drive to an attached garage. The vegetable garden is to the west side of the cottage with paved paths, vegetable/ cut flower beds, and a brick and wooden garden store.

## DIRECTIONS (B95 6DU)

From Henley-in-Arden, proceed south on the A3400 and through Wootton Wawen. Pass the entrance to Edstone Hall on your left and take the next right before the Golden Cross public house into Salters Lane. Proceed along Salters Lane for approximately 0.75 miles and turn left, signposted Newnham. Travel along the lane through the hamlet, and Lane End Cottages will be found on the right-hand side.



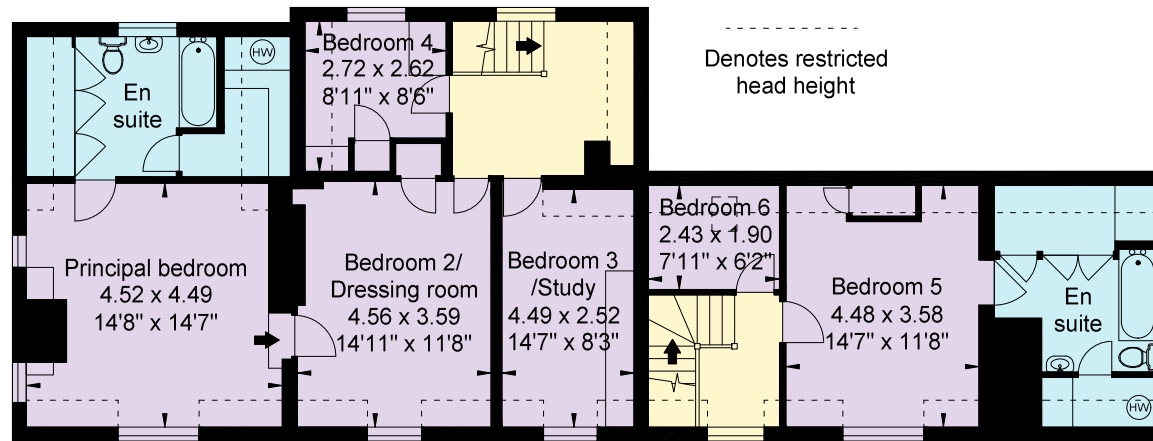




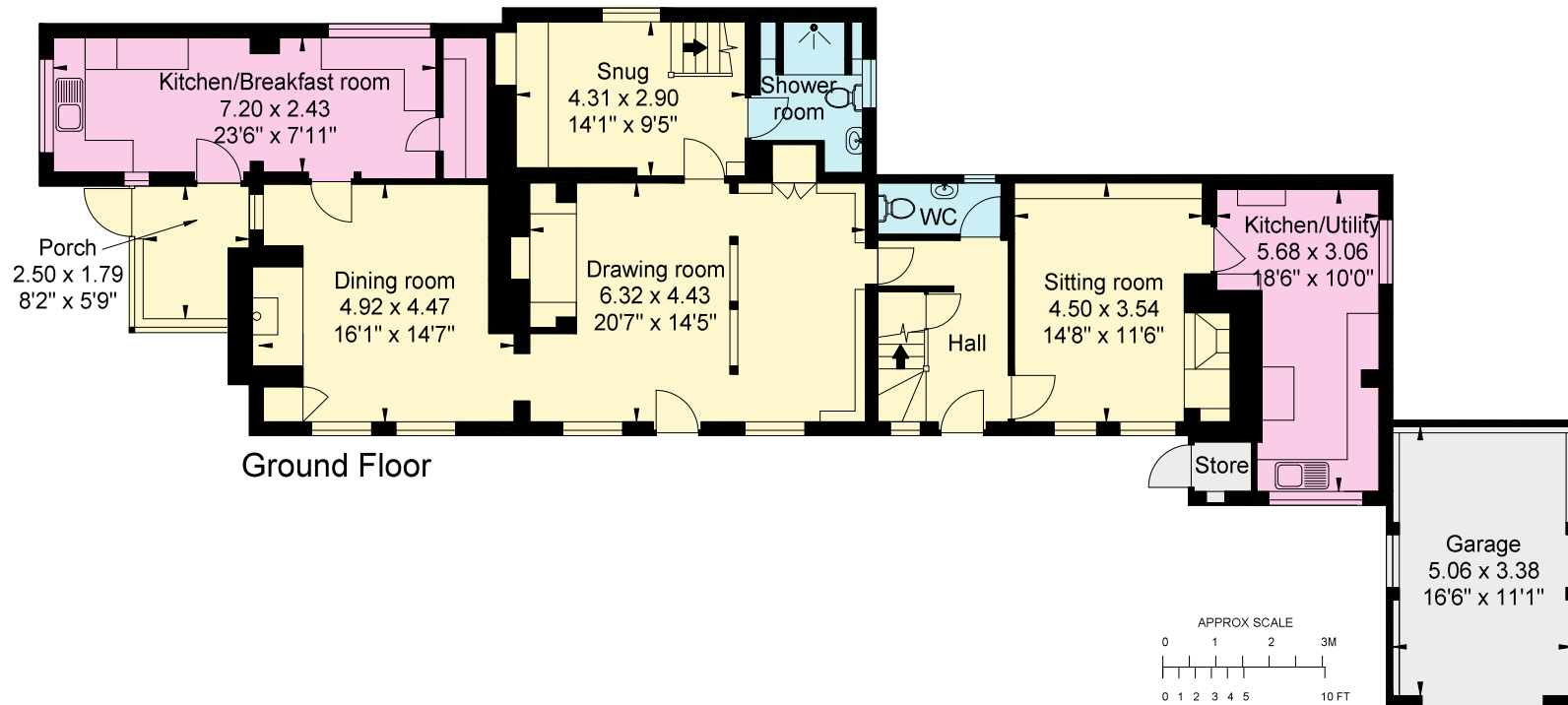








First Floor



Ground Floor

APPROXIMATE GROSS INTERNAL FLOOR AREA:

House: 274 sq m (2,951 sq ft)

Garage/Store: 18 sq m (195 sq ft)

Total: 292 sq m (3,146 sq ft)

inc. restricted head height

This plan is for layout guidance only. Not drawn to scale unless stated. Windows and door openings are approximate. Whilst every care is taken in the preparation of this plan, please check all dimensions, shapes and compass bearings before making any decisions reliant upon them.





We would be delighted  
to tell you more.

James Way  
01789 206950  
james.way@knightfrank.com

Knight Frank Stratford-upon-Avon  
Bridgeway House, Bridgeway,  
Stratford-upon-Avon, CV37 6YX

Evey Hadley  
01789 206964  
evey.hadley@knightfrank.com

Knight Frank Stratford-upon-Avon  
Bridgeway House, Bridgeway,  
Stratford-upon-Avon, CV37 6YX

knightfrank.co.uk

Your partners in property

1. Particulars: These particulars are not an offer or contract, nor part of one. You should not rely on statements given by Knight Frank in the particulars, by word of mouth or in writing ("information") as being factually accurate about the property, its condition or its value. Neither Knight Frank nor any joint agent has any authority to make any representations about the property, and accordingly any information given is entirely without responsibility on the part of Knight Frank. 2. Material Information: Please note that the material information is provided to Knight Frank by third parties and is provided here as a guide only. While Knight Frank has taken steps to verify this information, we advise you to confirm the details of any such material information prior to any offer being submitted. If we are informed of changes to this information by the seller or another third party, we will use reasonable endeavours to update this as soon as practical. 3. Photos, Videos etc: The photographs, property videos and virtual viewings etc. show only certain parts of the property as they appeared at the time they were taken. Areas, measurements and distances given are approximate only. 4. Regulations etc: Any reference to alterations to, or use of, any part of the property does not mean that any necessary planning, building regulations or other consent has been obtained. A buyer must find out by inspection or in other ways that these matters have been properly dealt with and that all information is correct. 5. Fixtures and fittings: A list of the fitted carpets, curtains, light fittings and other items fixed to the property which are included in the sale (or may be available by separate negotiation) will be provided by the Seller's Solicitors. 6. VAT: The VAT position relating to the property may change without notice. 7. To find out how we process Personal Data, please refer to our Group Privacy Statement and other notices at <https://www.knightfrank.com/legals/privacy-statement>.

Particulars dated November 2025. Photographs and videos dated October 2025. All information is correct at the time of going to print. Knight Frank is the trading name of Knight Frank LLP. Knight Frank LLP is a limited liability partnership registered in England and Wales with registered number OC305934. Our registered office is at 55 Baker Street, London W1U 8AN. We use the term 'partner' to refer to a member of Knight Frank LLP, or an employee or consultant. A list of members names of Knight Frank LLP may be inspected at our registered office. If you do not want us to contact you further about our services then please contact us by either calling 020 3544 0692, email to [marketing.help@knightfrank.com](mailto:marketing.help@knightfrank.com) or post to our UK Residential Marketing Manager at our registered office (above) providing your name and address.



Date: 12 December 2025  
Our reference: STR012507445

## Lane End Cottages, Newnham, Henley-in-Arden, B95 6DU

We have pleasure in enclosing details of the above property for which we are quoting a guide price of **£700,000**.

Please let us know if you need any further information about the property or surrounding area and we will be delighted to provide it.

Full details of all our properties and a wide range of services can be viewed online at [knightfrank.co.uk](https://knightfrank.co.uk). You can also receive early information on new properties coming on to the market by signing up to [My Knight Frank](#).

For additional information or to make arrangements to view the property, please get in touch.

**We'd love to help you.**

Yours faithfully

A stylized, handwritten signature of "Knight Frank" in black ink.

**KNIGHT FRANK LLP**

Enc:

**James Way**  
Partner, Head of Midlands Sales  
+44 1789 206 950  
[james.way@knightfrank.com](mailto:james.way@knightfrank.com)

**Knight Frank, Stratford**  
Bridgeway House, Bridgeway, Stratford upon Avon, CV37 6YX  
+44 1789 297 735

**[knightfrank.co.uk](https://knightfrank.co.uk)**

Knight Frank LLP is a limited liability partnership registered in England and Wales with registered number OC305934. Our registered office is at 55 Baker Street, London W1U 8AN. We use the term 'partner' to refer to a member of Knight Frank LLP, or an employee or consultant. A list of members' names of Knight Frank LLP may be inspected at our registered office.

**Regulated by RICS**

**Your partners in property**

V4.3 Sep 24