



3 CHESTNUT WALK


Stratford-upon-Avon








# A LARGE DOUBLE-FRONTED TOWNHOUSE

In the centre of Old Town, Stratford-upon-Avon.

  
5

  
4

  
5

  
D

EPC

**Distances:** M40 (J15) 8 miles, Warwick and Warwick Parkway Station 10 miles, Leamington Spa 12 miles, Chipping Campden, 12 miles, Banbury 20 miles, Birmingham International Airport 23 miles  
(All distances are approximate)

Local Authority: Stratford-on-Avon District Council  
Council Tax band: G  
Tenure: Freehold



# SITUATION

Old Town is just a short stroll from the heart of Stratford-upon-Avon. This sought-after residential area is renowned for its stunning Georgian and Victorian properties, offering timeless elegance in one of the region’s most desirable locations.

Stratford-upon-Avon is the cultural hub of the area, home to the world-famous Royal Shakespeare Company. You’ll find an array of top-tier restaurants, cosy pubs, and vibrant dining spots, all within easy walking distance. Enjoy a night at the theatre or a leisurely afternoon in the beautiful gardens – all just moments from your doorstep.

Families will appreciate the excellent choice of schools, including state, private, and grammar options, catering to every need. Plus, with the M40 (J15) just 8 miles away, you’ll have quick access to Birmingham, London, and the wider motorway network.





# THE PROPERTY

3 Chestnut Walk is a charming townhouse ideally located in the heart of picturesque Old Town. This stunning home offers approximately 3,400 sq ft of living space, seamlessly blending classic architectural beauty with modern comfort. Traditional features such as exposed brickwork, sash windows, and decorative wrought-iron railings set the tone, while the spacious interiors provide an abundance of room for family living and entertaining.

An inviting entrance hallway has slate flooring, a guest cloakroom, and a staircase leading to the first floor. The impressive drawing room, with its wooden flooring and open fireplace, has dual aspect views, allowing natural light to pour in from both a sash window at the front and French doors opening to the rear garden. Across the hallway, the cosy sitting room overlooks the front of the property and connects to the study, which could also serve as a snug. This central study area offers a perfect link between the front and rear of the house.







For more relaxed family moments, there is a spacious family room with French doors opening on to a side terrace. The open-plan kitchen and dining area features porcelain tiled flooring, sleek silestone worktops, two sinks, a large central island, and underfloor heating. Integrated Miele appliances, including two ovens, a warming drawer, a combi-oven, a five-ring induction hob, a dishwasher, and a fridge/freezer, make this space both stylish and functional. The dining area has ample room for a large table and sofa, with garden views to enhance every meal. Just off the kitchen, a utility room with a fridge and plumbing for a washing machine completes this well-appointed space.

Upstairs, the principal bedroom suite offers a peaceful rear aspect with garden views, a spacious dressing area, built-in wardrobes, and an en suite shower room. Two additional double bedrooms, each with their own en suite shower rooms, provide plenty of space for family or guests. A fourth bedroom shares access to a family shower room, while the fifth bedroom has double doors to a private balcony.







The outdoor space is equally impressive, with a southwest-facing garden that provides both privacy and plenty of space to relax or entertain. Walled on nearly all sides, the garden is mainly laid to lawn with a large patio area, ideal for outdoor dining. A side terrace leads to additional seating, while a pathway provides access to a shared gated passageway at the front of the property.

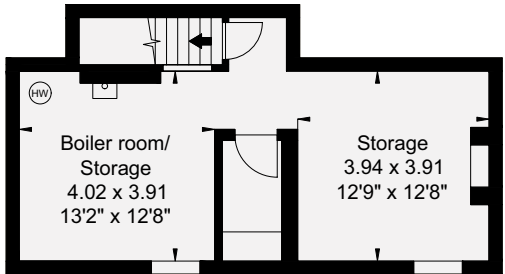
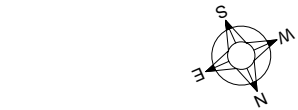
Parking is conveniently available on-street on Chestnut Walk or in the surrounding streets.

## PROPERTY INFORMATION

**Services:** All main services are connected to the property. Gas fired central heating.

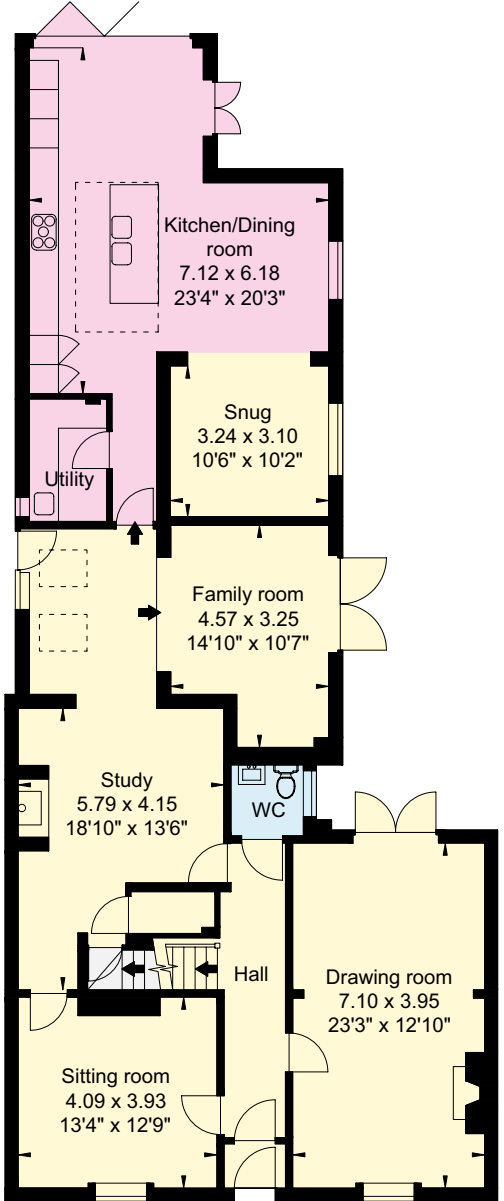
**Directions (CV37 6HG):** whatthreewords:///allow.bills.ends

**Viewing:** By prior appointment only with the agents.

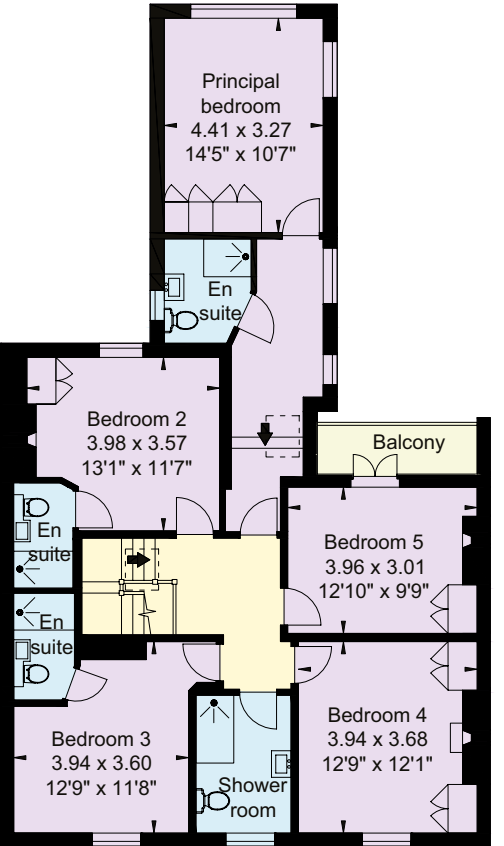


Cellar

Approximate Gross Internal Area  
312 sq m (3,360 sq ft)



Ground Floor



First Floor

- Reception
- Bedroom
- Bathroom
- Kitchen/Utility
- Storage
- Outside

This plan is for layout guidance only. Not drawn to scale unless stated. Windows and door openings are approximate. Whilst every care is taken in the preparation of this plan, please check all dimensions, shapes and compass bearings before making any decisions reliant upon them.

I would be delighted  
to tell you more.

**Samantha Bysouth**

01789 297735

samantha.bysouth@knightfrank.com

**Knight Frank Stratford-upon-Avon**

Bridgeway House, Bridgeway, Stratford-upon-Avon

Warwickshire, CV37 6YX

knightfrank.co.uk

Your partners in property

1. Particulars: These particulars are not an offer or contract, nor part of one. You should not rely on statements given by Knight Frank in the particulars, by word of mouth or in writing ("information") as being factually accurate about the property, its condition or its value. Neither Knight Frank nor any joint agent has any authority to make any representations about the property, and accordingly any information given is entirely without responsibility on the part of Knight Frank. 2. Material Information: Please note that the material information is provided to Knight Frank by third parties and is provided here as a guide only. While Knight Frank has taken steps to verify this information, we advise you to confirm the details of any such material information prior to any offer being submitted. If we are informed of changes to this information by the seller or another third party, we will use reasonable endeavours to update this as soon as practical. 3. Photos, Videos etc: The photographs, property videos and virtual viewings etc. show only certain parts of the property as they appeared at the time they were taken. Areas, measurements and distances given are approximate only. 4. Regulations etc: Any reference to alterations to, or use of, any part of the property does not mean that any necessary planning, building regulations or other consent has been obtained. A buyer must find out by inspection or in other ways that these matters have been properly dealt with and that all information is correct. 5. Fixtures and fittings: A list of the fitted carpets, curtains, light fittings and other items fixed to the property which are included in the sale (or may be available by separate negotiation) will be provided by the Seller's Solicitors. 6. VAT: The VAT position relating to the property may change without notice. 7. To find out how we process Personal Data, please refer to our Group Privacy Statement and other notices at <https://www.knightfrank.com/legals/privacy-statement>.

Particulars dated March 2025. Photographs and videos dated March 2025. All information is correct at the time of going to print. Knight Frank is the trading name of Knight Frank LLP. Knight Frank LLP is a limited liability partnership registered in England and Wales with registered number OC305934. Our registered office is at 55 Baker Street, London W1U 8AN. We use the term 'partner' to refer to a member of Knight Frank LLP, or an employee or consultant. A list of members names of Knight Frank LLP may be inspected at our registered office. If you do not want us to contact you further about our services then please contact us by either calling 020 3544 0692, email to [marketing.help@knightfrank.com](mailto:marketing.help@knightfrank.com) or post to our UK Residential Marketing Manager at our registered office (above) providing your name and address.

Date: 12 March 2025  
Our reference: STR012519984

### 3 Chestnut Walk, Stratford-upon-Avon, CV37 6HG

We have pleasure in enclosing details of the above property for which we are quoting a guide price of £1,395,000.

Please let us know if you need any further information about the property or surrounding area and we will be delighted to provide it.

Full details of all our properties and a wide range of services can be viewed online at [knightfrank.co.uk](https://knightfrank.co.uk). You can also receive early information on new properties coming on to the market by signing up to [My Knight Frank](#).

For additional information or to make arrangements to view the property, please get in touch.

**We'd love to help you.**

Yours faithfully



**KNIGHT FRANK LLP**

Enc:

**Samantha Bysouth**

Associate

+44 1789 206 953

[samantha.bysouth@knightfrank.com](mailto:samantha.bysouth@knightfrank.com)

**Knight Frank, Stratford**

Bridgeway House, Bridgeway, Stratford upon Avon, CV37 6YX  
+44 1789 297 735

**[knightfrank.co.uk](https://knightfrank.co.uk)**

Your partners in property

Knight Frank LLP is a limited liability partnership registered in England and Wales with registered number OC305934. Our registered office is at 55 Baker Street, London W1U 8AN. We use the term 'partner' to refer to a member of Knight Frank LLP, or an employee or consultant. A list of members' names of Knight Frank LLP may be inspected at our registered office.

Regulated by RICS

V4.3 Sep 24