



Broadlands, Leek Wootton, Warwick





A large, **detached family home** nestled in the centre of the village, with a triple garage and one bedroom annexe.

Distances

Kenilworth 1.5 miles, Warwick 2.5 miles, Warwick Parkway Station 3.3 miles, Leamington Spa 4.5 miles, M40 (J15) 5 miles, Coventry 10 miles, Stratford upon Avon 12 miles, Birmingham Airport 13 miles (All distances and times are approximate)

Location

Broadlands is located in the highly regarded village of Leek Wootton. The property is within walking distance to The Anchor public house, All Saints Church, All Saints Church of England primary school, Leek Wootton Sports Club and The Warwickshire Golf and Country Club. The property is well placed for the local towns of Leamington Spa, Kenilworth, Warwick and the city of Coventry. Amenities can be found in Kenilworth, Warwick and Leamington Spa. For the commuter, there is easy access to the motorway and rail networks. There are an excellent range of state, private and grammar schools in the area.



5-6



5-6



4-5



Private



D

Tenure

Freehold

Local Authority

Warwick District Council

Council Tax

Band H







The property

Broadlands, 3 Hill Wootton Road is a beautifully appointed family home which enjoys a private and generous plot in the centre of the village. Leek Wootton is a highly sought-after village close to Kenilworth and Warwick, conveniently placed for the A46, M40 and Warwick Parkway train station.

The property was built in the late 50s and accommodation is arranged over three floors with a separate one-bedroom annexe which has been previously used as a holiday let.

The front door opens into a large entrance hallway with oak flooring and an impressive central oak staircase with ornate iron railings. French doors open from the hallway to a seating area under a portico, overlooking the garden. Accessed from the hallway is a guest cloakroom and coats/boot room.

The drawing room has a dual aspect to both the front and rear, a Electric Gazco Manhattan electric fire and door to the garden. Sash windows feature throughout the house. Dining room with front aspect with serving hatch to the kitchen/breakfast room and study off. Kitchen with tiled flooring, breakfast bar and granite worktops. Integrated appliances include an dishwasher, Neff 5 ring induction hob and AEG oven. Off the kitchen is a walk-in pantry cupboard and utility.



On the galleried landing, French doors open onto a pretty seating area on the balcony. The principal suite mirrors the drawing room below and is generous in size, with a dual aspect, three sets of built-in wardrobes and an en suite shower room. There are two further double bedrooms with en suite bathrooms on the first floor as well as a family bathroom. A study area off the landing could be used as a snug or gaming area, with a staircase rising to the second floor. The owners converted the loft to create additional accommodation and there are two further double bedrooms which share a shower room.







Outside, the fore garden is similar in size to the rear garden and there is parking for several cars on the driveway. The driveway is owned by Broadlands and two of the neighbours have right of access over it to their properties. The rear garden is beautiful and private, mainly laid to lawn with a south-facing aspect and a terrace stretching the width of the garden. The front garden is mainly laid to lawn with several mature trees and beautifully stocked borders.

There is a triple garage and covered loggia. The one bedroom self-contained annexe has its own private entrance next to the garage, which opens into the kitchen area and shower room leading off. A staircase rises to the first floor and the open floor bedroom/sitting/dining room is above the triple garage.

If a buyer didn't require an annexe, this large room would work well as a games room and home office.

Services

Mains gas, electricity and water are connected to the property.

Directions (CV35 7QL)

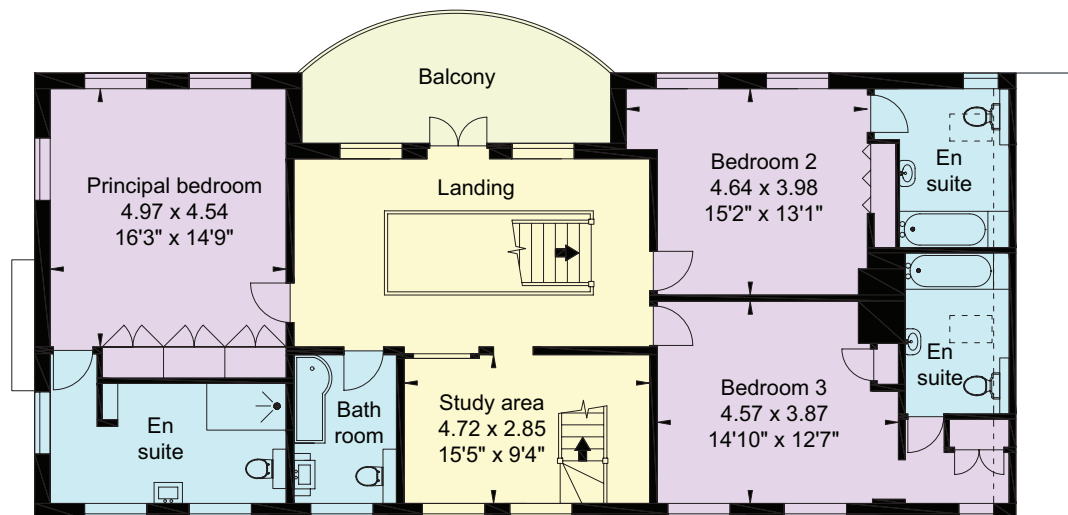
What3words: ///serves.porch.spots

Viewing

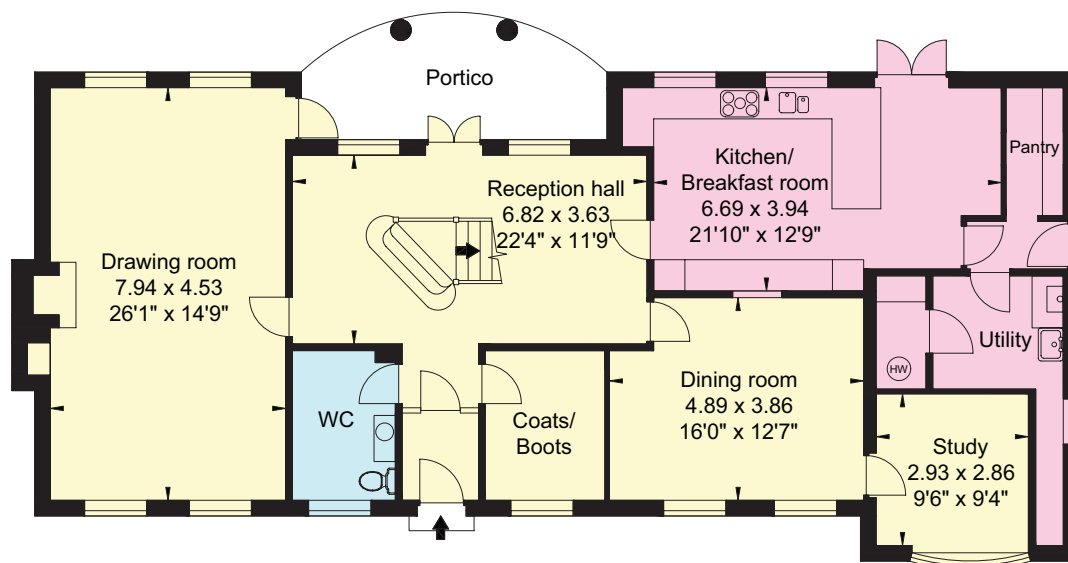
By prior appointment only with the agents.







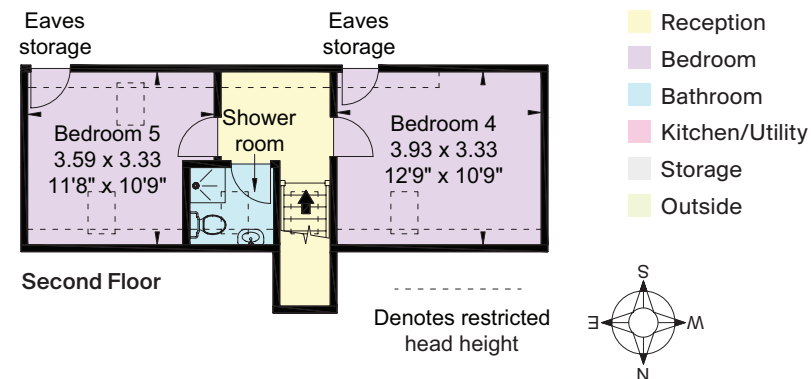
First Floor



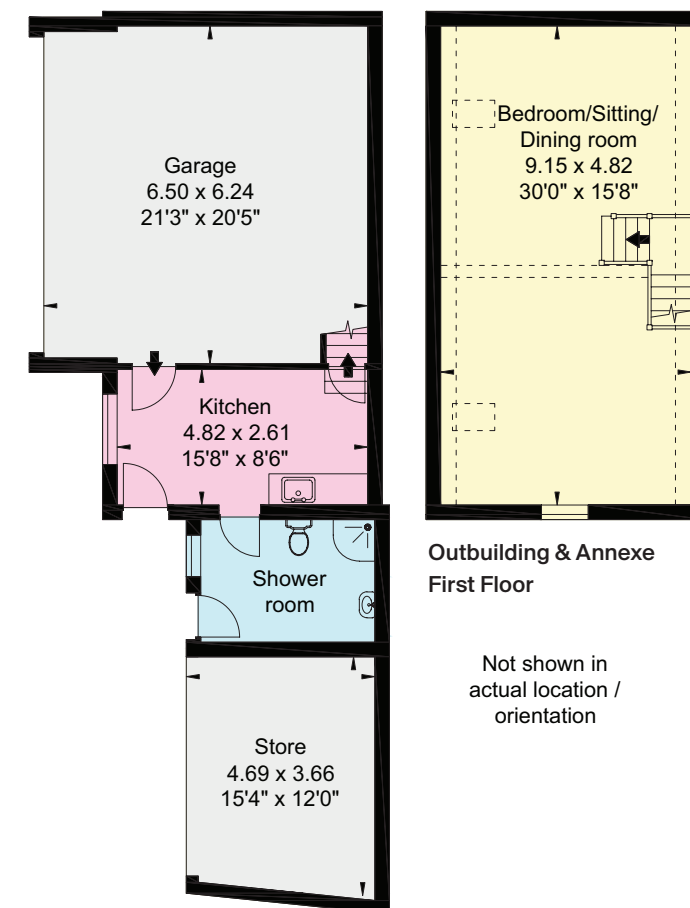
Ground Floor

Approximate Gross Internal Floor Area
House: 323 sq m (3,477 sq ft)
Outbuilding & Annexe: 125 sq m (1,347 sq ft)
Total: 448 sq m (4,824 sq ft)
inc. restricted head height

This plan is for guidance only and must not be relied upon as a statement of fact. Attention is drawn to the Important Notice on the last page of the text of the Particulars.



Second Floor



Outbuilding & Annexe
Ground Floor



Knight Frank Stratford-upon-Avon
Bridgeway House, Bridgeway
Stratford-upon-Avon
Warwickshire CV37 6YX
[knightfrank.co.uk](https://www.knightfrank.co.uk)

I would be delighted to tell you more

Samantha Bysouth
01789 297735
samantha.bysouth@knightfrank.com



Fixtures and fittings: A list of the fitted carpets, curtains, light fittings and other items fixed to the property which are included in the sale (or may be available by separate negotiation) will be provided by the Seller's Solicitors.

Important Notice: 1. Particulars: These particulars are not an offer or contract, nor part of one. You should not rely on statements by Knight Frank LLP in the particulars or by word of mouth or in writing ("information") as being factually accurate about the property, its condition or its value. Neither Knight Frank LLP nor any joint agent has any authority to make any representations about the property, and accordingly any information given is entirely without responsibility on the part of the agents, seller(s) or lessor(s). 2. Photos, Videos etc: The photographs, property videos and virtual viewings etc. show only certain parts of the property as they appeared at the time they were taken. Areas, measurements and distances given are approximate only. 3. Regulations etc: Any reference to alterations to, or use of, any part of the property does not mean that any necessary planning, building regulations or other consent has been obtained. A buyer or lessee must find out by inspection or in other ways that these matters have been properly dealt with and that all information is correct. 4. VAT: The VAT position relating to the property may change without notice. 5. To find out how we process Personal Data, please refer to our Group Privacy Statement and other notices at <https://www.knightfrank.com/legals/privacy-statement>.

Particulars dated June 2024. Photographs and videos dated June 2024.

All information is correct at the time of going to print. Knight Frank is the trading name of Knight Frank LLP. Knight Frank LLP is a limited liability partnership registered in England and Wales with registered number OC305934. Our registered office is at 55 Baker Street, London W1U 8AN. We use the term 'partner' to refer to a member of Knight Frank LLP, or an employee or consultant. A list of members names of Knight Frank LLP may be inspected at our registered office. If you do not want us to contact you further about our services then please contact us by either calling 020 3544 0692, email to marketing.help@knightfrank.com or post to our UK Residential Marketing Manager at our registered office (above) providing your name and address. Brochure by [wordperfectprint.com](https://www.wordperfectprint.com)



Date: 10 February 2025
Our reference: STR012438311

Broadlands, 3 Hill Wootton Road, Leek Wootton, Warwick, CV35 7QL

We have pleasure in enclosing details of the above property for which we are quoting a guide price of £1,450,000.

Please let us know if you need any further information about the property or surrounding area and we will be delighted to provide it.

Full details of all our properties and a wide range of services can be viewed online at knightfrank.co.uk. You can also receive early information on new properties coming on to the market by signing up to [My Knight Frank](#).

For additional information or to make arrangements to view the property, please get in touch.

We'd love to help you.

Yours faithfully



KNIGHT FRANK LLP

Enc:

Samantha Bysouth

Associate

+44 1789 206 953

samantha.bysouth@knightfrank.com

Knight Frank, Stratford

Bridgeway House, Bridgeway, Stratford upon Avon, CV37 6YX
+44 1789 297 735

knightfrank.co.uk

Your partners in property

Knight Frank LLP is a limited liability partnership registered in England and Wales with registered number OC305934. Our registered office is at 55 Baker Street, London W1U 8AN. We use the term 'partner' to refer to a member of Knight Frank LLP, or an employee or consultant. A list of members' names of Knight Frank LLP may be inspected at our registered office.

Regulated by RICS

V4.3 Sep 24