



The Thatched House, Luddington, Warwickshire

---



# A lovely unspoilt listed detached four bedroom thatched cottage overlooking the village green in a sought-after village close to Stratford-upon-Avon.

---

## Summary of accommodation

Hall | Dining room | Drawing room | Kitchen | Utility room | Cloakroom | Boiler room

Four bedrooms (one with en suite WC and basin) | Bathroom | Shower room

About 1,637 square feet

Cottage garden to front and rear, 28-foot long garage

## Distances

Stratford-upon-Avon 3 miles, M40 (J15) 9 miles, Warwick 11 miles

Warwick Parkway Station 11 miles (trains to London Marylebone from 69 mins)

Birmingham International Airport 23 miles

(All distances and times are approximate)



Knight Frank Stratford-upon-Avon  
Bridgeway  
Stratford-upon-Avon  
CV37 6YX  
[knightfrank.co.uk](http://knightfrank.co.uk)

James Way  
01789 297735  
[james.way@knightfrank.com](mailto:james.way@knightfrank.com)

## Situation

Luddington is a pretty village on the banks of the River Avon, 3 miles west of Stratford-upon-Avon. Facilities include a 19th-century church, a marina with a 17th-century lock, village green and village hall.

Stratford-upon-Avon is internationally renowned for its Shakespearean heritage and theatres and also provides excellent shopping and recreational facilities, including a superb array of restaurants, shops, bars and dining pubs. The River Avon and the canal offer boating opportunities, and a footpath connects Luddington directly with Stratford-upon-Avon along the banks of the river.

The area has a wide selection of state, private and grammar schools, including The Croft Prep School, King Edward's Grammar School for Boys and Stratford-upon-Avon Grammar School for Girls, Alcester Grammar School; Warwick Prep and Public Schools and King's High School for Girls in Warwick, Kingsley School for Girls and Arnold Lodge School in Leamington Spa.

Golf is at Welford-on-Avon, The Welcombe at Stratford-upon-Avon and The Warwickshire at Leek Wootton. Horse racing can be enjoyed at Stratford-upon-Avon, Warwick and Cheltenham.





## The property

The Thatched Cottage, formerly two houses, is an attractive Grade II listed property occupying a prime position within the village and sits within a Conservation Area.

The property dates in parts from the 17th century, with timber frame with painted brick infill, with some leaded casement windows, under a hipped thatched roof with three eyebrow dormer windows overlooking the green. Parts of the property may date from the mid-fifteenth century. There is a late twentieth-century L-shaped single-storey wing comprising the utility room, WC and garage. The cottage has fine exposed wall and ceiling timbers throughout.

The cottage is very unspoilt and will benefit from updating and new kitchen and bathroom fittings. However, the property retains all of its period charm and was rethatched in about 2020. Some windows have secondary glazing. There is a traditional inglenook fireplace in the drawing room, windows to front and rear with a front bay window and door to the back garden. The dining room is also dual aspect and has an attractive recessed fireplace and parquet floor. There is a fitted kitchen and large utility room with a door to the front garden and to the garage. There is a ground-floor bathroom.





Two staircases give access to two separate first-floor landings, one with bedroom three and principle bedroom, with built-in cupboards and a shower room, the other to two separate bedrooms. Bedroom two with built-in clothes closet and bedroom three, with cupboard and en suite washroom with WC and basin.

## Gardens and grounds

Situated behind a traditional hedge, with a gate to give access to the garage and gravel parking area from access over the village green. The front garden is dominated by a fine Walnut tree and a lovely magnolia and is lawned, with shrubs, holly and yew. Oil tank and wood store. The back garden is lawned, with a close boarded fence. The rear wall of the single-storey wing forms the rear boundary of that part of the property.

## Services

Mains electricity, water and drainage, Oil fired Central heating. The property contributes toward the cost of maintaining the village green.

## Fixtures and fittings

Only those items mentioned in these sales particulars, together with fitted carpets curtains, some light fittings, garden statutory and lamps, and kitchen appliances, are included in the sale. All others are excluded.



## Directions (CV37 9SD)

From the centre of Stratford-upon-Avon, proceed West on the B439 Evesham Road. Just before Bordon Hill, turn left signposted Luddington and Stratford Racecourse. Proceed along this road for approximately 1½ miles, and on reaching the centre of the village of Luddington, The Thatched Cottage will be found on the right facing on to the village green.

**What3words:** ///soggy.wildfires.lasts

## Viewing

By prior appointment only with the agents.

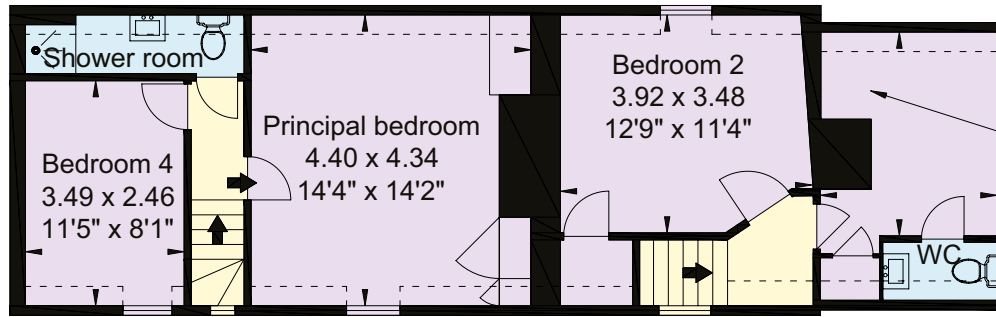
## Property information

**Tenure:** Freehold

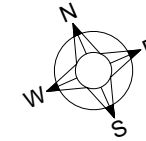
**Local Authority:** Stratford on Avon District Council: 01789 267575

**Council Tax:** Band F



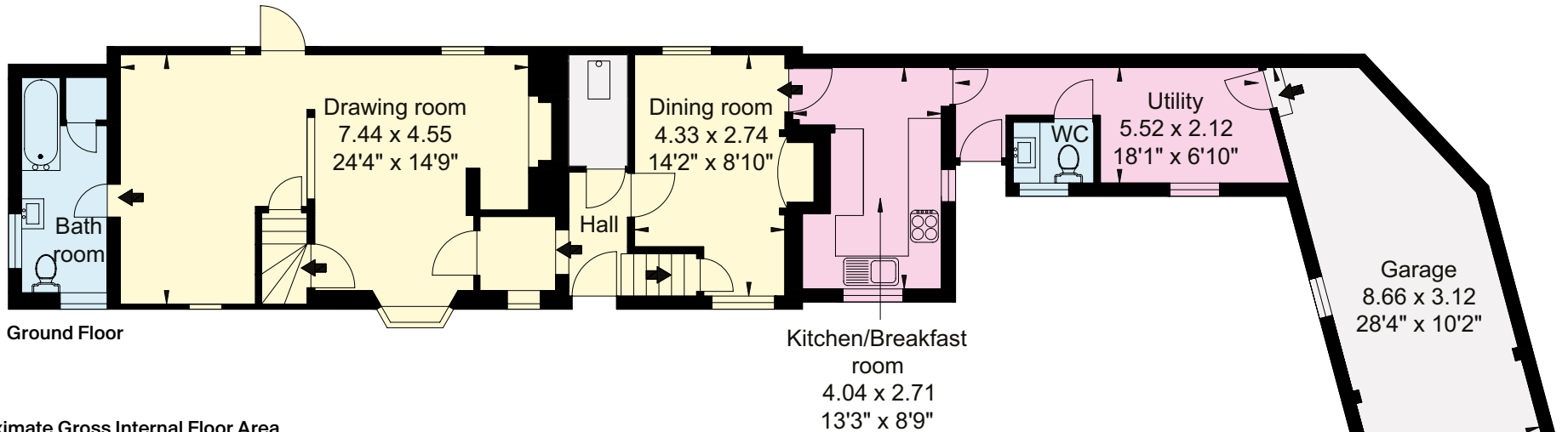


First Floor



- Reception
- Bedroom
- Bathroom
- Kitchen/Utility
- Storage
- Outside

Denotes restricted head height



Ground Floor

**Approximate Gross Internal Floor Area**

**House: 152 sq m (1,637 sq ft)**

**Garage: 24 sq m (260 sq ft)**

**Total: 176 sq m (1,897 sq ft)**

**inc. restricted head height**

This plan is for guidance only and must not be relied upon as a statement of fact. Attention is drawn to the Important Notice on the last page of the text of the Particulars.



Fixtures and fittings: A list of the fitted carpets, curtains, light fittings and other items fixed to the property which are included in the sale (or may be available by separate negotiation) will be provided by the Seller's Solicitors.

Important Notice: 1. Particulars: These particulars are not an offer or contract, nor part of one. You should not rely on statements by Knight Frank LLP in the particulars or by word of mouth or in writing ("information") as being factually accurate about the property, its condition or its value. Neither Knight Frank LLP nor any joint agent has any authority to make any representations about the property, and accordingly any information given is entirely without responsibility on the part of the agents, seller(s) or lessor(s). 2. Photos, Videos etc: The photographs, property videos and virtual viewings etc. show only certain parts of the property as they appeared at the time they were taken. Areas, measurements and distances given are approximate only. 3. Regulations etc: Any reference to alterations to, or use of, any part of the property does not mean that any necessary planning, building regulations or other consent has been obtained. A buyer or lessee must find out by inspection or in other ways that these matters have been properly dealt with and that all information is correct. 4. VAT: The VAT position relating to the property may change without notice. 5. To find out how we process Personal Data, please refer to our Group Privacy Statement and other notices at <https://www.knightfrank.com/legals/privacy-statement>.

Particulars dated September 2024. Photographs and videos dated August 2024.

All information is correct at the time of going to print. Knight Frank is the trading name of Knight Frank LLP. Knight Frank LLP is a limited liability partnership registered in England and Wales with registered number OC305934. Our registered office is at 55 Baker Street, London W1U 8AN. We use the term 'partner' to refer to a member of Knight Frank LLP, or an employee or consultant. A list of members names of Knight Frank LLP may be inspected at our registered office. If you do not want us to contact you further about our services then please contact us by either calling 020 3544 0692, email to [marketing.help@knightfrank.com](mailto:marketing.help@knightfrank.com) or post to our UK Residential Marketing Manager at our registered office (above) providing your name and address. Brochure by [wordperfectprint.com](http://wordperfectprint.com)



Date: 03 December 2024  
Our reference: STR190423

## The Thatched Cottage, The Green, Luddington, Stratford-upon-Avon, CV37 9SD

We have pleasure in enclosing details of the above property for which we are quoting a guide price of **£550,000**.

Please let us know if you need any further information about the property or surrounding area and we will be delighted to provide it.

Full details of all our properties and a wide range of services can be viewed online at [knightfrank.co.uk](https://knightfrank.co.uk). You can also receive early information on new properties coming on to the market by signing up to [My Knight Frank](#).

For additional information or to make arrangements to view the property, please get in touch.

### We'd love to help you.

Yours faithfully



**KNIGHT FRANK LLP**

Enc:

**James Way**  
Partner  
+44 1789 206 950  
[james.way@knightfrank.com](mailto:james.way@knightfrank.com)

**Knight Frank, Stratford**  
Bridgeway House, Bridgeway, Stratford upon Avon, CV37 6YX  
+44 1789 297 735

**[knightfrank.co.uk](https://knightfrank.co.uk)**

Your partners in property

Knight Frank LLP is a limited liability partnership registered in England and Wales with registered number OC305934. Our registered office is at 55 Baker Street, London W1U 8AN. We use the term 'partner' to refer to a member of Knight Frank LLP, or an employee or consultant. A list of members' names of Knight Frank LLP may be inspected at our registered office.

Regulated by RICS

V4.3 Sep 24