



Drakeshill, Kenilworth, Warwickshire





A detached family home in an **elevated position** overlooking open countryside, close to Kenilworth.

Distances

Kenilworth 2.2 miles, Tile Hill train station and Warwick University 4 miles, Coventry 7 miles, Warwick 7.5 miles, Warwick Parkway Station 8 miles, Leamington Spa 8 miles, Birmingham International Airport 8.5 miles, M40 (J15) 10 miles, Stratford-upon-Avon 17.5 miles
(All distances and times are approximate)

Situation

Drakeshill is located on the edge of Kenilworth, along the road to Balsall Common. Kenilworth is a small historic town in the heart of Warwickshire with a wide range of shops, including a Waitrose, restaurants, sports facilities, and general amenities to suit various requirements. Kenilworth has a new railway station linking the town to nearby mainline stations at Leamington Spa and Coventry, while Warwick Parkway Station is also nearby.

					EPC
5	2	3		Double	E

Tenure	Local Authority	Council Tax
Freehold	Warwick District Council	Band G





The area is well served by a range of state, grammar and private schools, including Crackley Hall in Kenilworth, King Henry VIII and Bablake in Coventry, Warwick School for Boys and King's High School for Girls in Warwick, Kingsley School for Girls and Arnold Lodge School in Leamington Spa.

The national motorway network is within easy reach, and Birmingham International Airport is just 11 miles away. Kenilworth has its own golf club, with The Warwickshire and Stoneleigh clubs also nearby.

The property

Drakeshill is a detached family home built in 1934 with a prominent, elevated position overlooking open countryside. The current owners have carried out work, including a new kitchen/dining room, replacement double glazing throughout most of the property, and rewiring and re-insulation of the roof. Planning permission has also been granted to extend the property, and there is exciting scope with the extensive range of outbuildings. The property sits on approximately 1.2 acres, with gardens wrapping around the property.

The front door opens into an entrance hallway with original parquet flooring, a guest cloakroom and a staircase rising to the first floor.







A small garden room is located off the hallway, and double doors open on to the garden. An open-plan kitchen/dining room has plenty of light and suits modern-day living, with a dual aspect and lovely views across the garden.

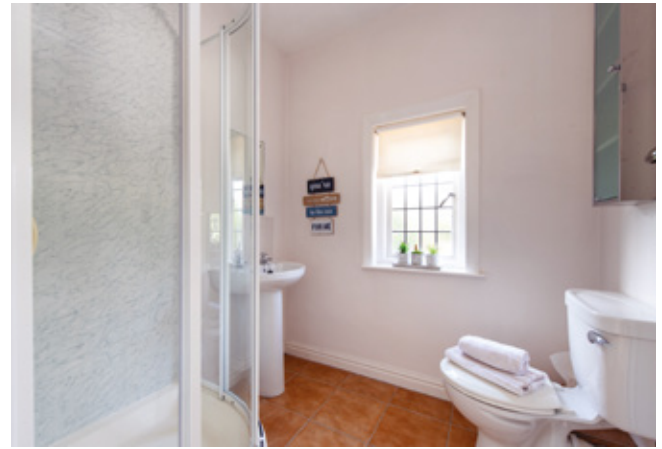
The recently updated kitchen features cherrywood units, granite worktops, Turkish marble flooring, a central island and a separate breakfast bar. Integrated appliances include a Neff dishwasher, hob, extractor, two ovens, warming drawer, a Bosch coffee machine, Klarstein wine fridge and Miele fridge/freezer.

There are two sets of large double doors opening on to the garden. From the kitchen is a utility room, rear entrance porch, and a conservatory with a gardener's WC, boiler room, and access to the integral double garage.

The large lounge has windows to two sides, a fireplace and built-in cupboards. A separate study/playroom with a bay window and side aspect is accessed from the hallway.

Upstairs, the large stained glass window on the landing is a beautiful property feature. The principal bedroom is generous in size, with built-in wardrobes and a bay window. A further large bedroom with a dual aspect and stunning view could also be used as the principal suite. There are three more double bedrooms, two with built-in wardrobes, a family bathroom, a separate WC, and a shower room.





Existing Floor plan

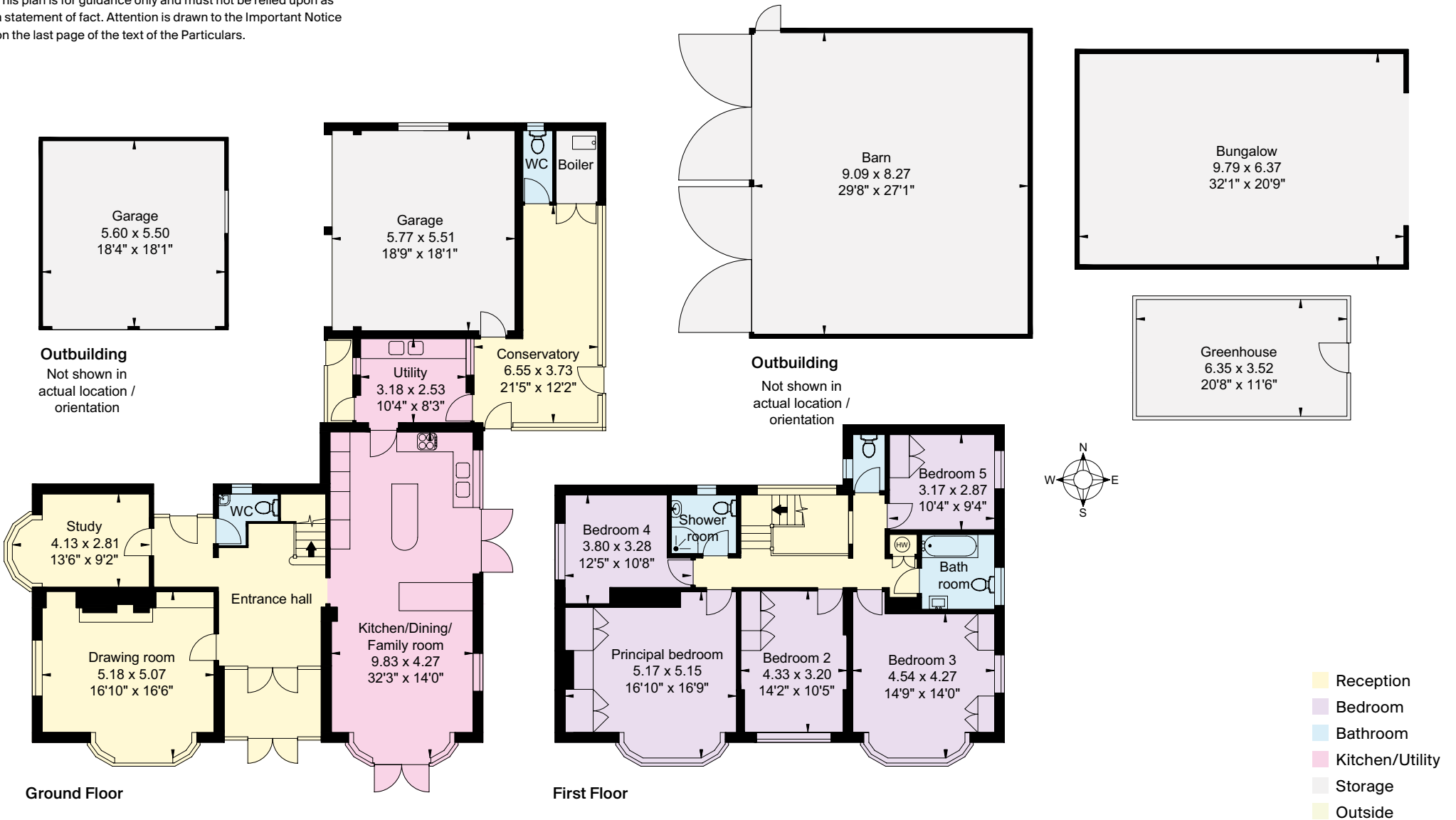
Approximate Gross Internal Floor Area

House: 247 sq m (2,660 sq ft)

Outbuildings: 225 sq m (2,422 sq ft)

Total: 472 sq m (5,082 sq ft)

This plan is for guidance only and must not be relied upon as a statement of fact. Attention is drawn to the Important Notice on the last page of the text of the Particulars.



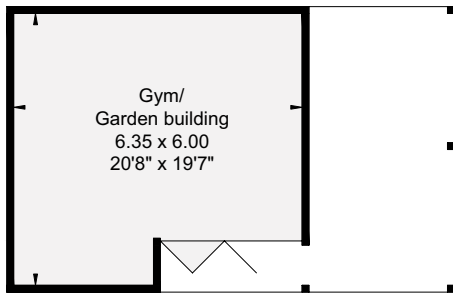
Proposed Floor plan

House: 342 sq m (3,682 sq ft)

Outbuildings: 122 sq m (1,313 sq ft)

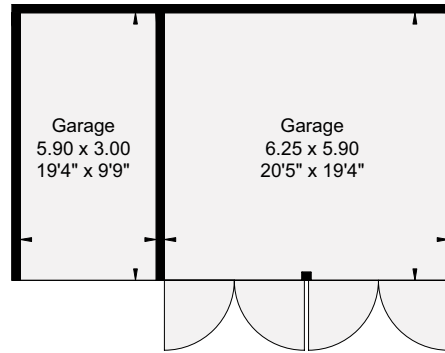
Total: 464 sq m (4,995 sq ft)

This plan is for guidance only and must not be relied upon as a statement of fact. Attention is drawn to the Important Notice on the last page of the text of the Particulars.



Proposed Outbuilding

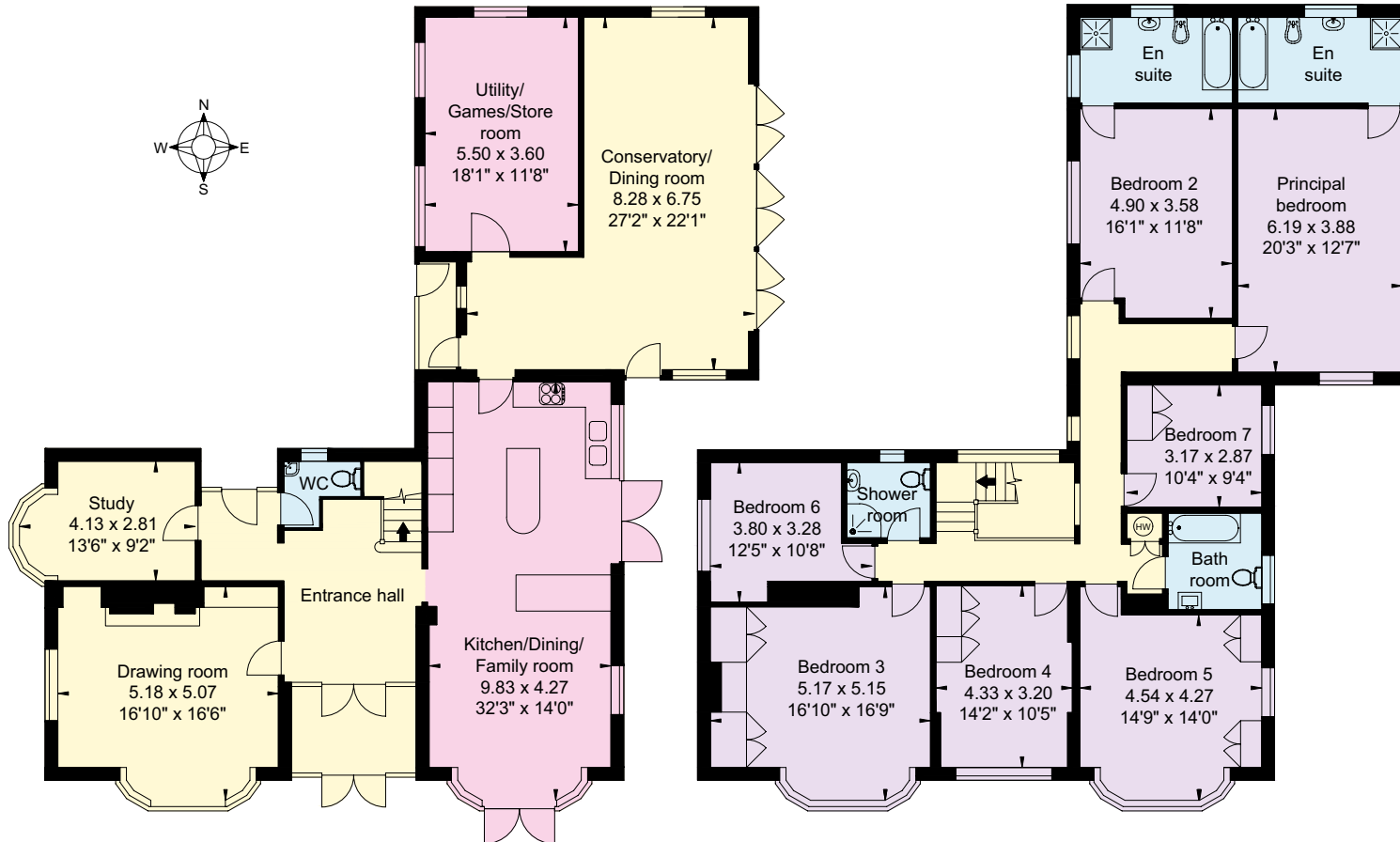
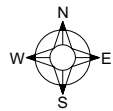
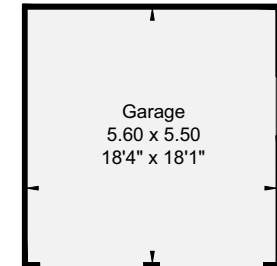
Not shown in actual location / orientation



Proposed Outbuilding

Outbuildings

Not shown in actual location / orientation



Ground Floor

First Floor



Gardens and grounds

The property has a gated entrance, and the driveway leads to a parking area in front of the house for several cars and a detached double garage and an integral double garage. A wooden gate opens to a rear driveway where there are two buildings and a large greenhouse. There is great scope for a buyer to replace these dwellings, subject to the necessary consents.

A pathway leads around the house and gives access to the south-facing garden. The garden has lovely views, several mature trees, and a pond.

Planning permission

Planning permission has been granted for a two-storey extension over the existing garage and conservatory attached to the house (reference W/22/1595). This would convert the current integral double garage into the main house's accommodation, with two additional upstairs bedrooms with en suite bathrooms.



Services

Mains electricity and water are connected to the property.

Oil fired central heating. New consumer unit.

Directions

Postcode: CV8 1PT

What3words: ///mixed.toast.vase

Viewing

By prior appointment only with the agents.

Knight Frank Stratford-upon-Avon

Bridgeway House, Bridgeway

Stratford-upon-Avon

Warwickshire CV37 6YX

[knightfrank.co.uk](https://www.knightfrank.co.uk)

I would be delighted to tell you more

Samantha Bysouth

01789 297735

samantha.bysouth@knightfrank.com

Fixtures and fittings: A list of the fitted carpets, curtains, light fittings and other items fixed to the property which are included in the sale (or may be available by separate negotiation) will be provided by the Seller's Solicitors.

Important Notice: 1. Particulars: These particulars are not an offer or contract, nor part of one. You should not rely on statements by Knight Frank LLP in the particulars or by word of mouth or in writing ("information") as being factually accurate about the property, its condition or its value. Neither Knight Frank LLP nor any joint agent has any authority to make any representations about the property, and accordingly any information given is entirely without responsibility on the part of the agents, seller(s) or lessor(s). 2. Photos, Videos etc: The photographs, property videos and virtual viewings etc. show only certain parts of the property as they appeared at the time they were taken. Areas, measurements and distances given are approximate only. 3. Regulations etc: Any reference to alterations to, or use of, any part of the property does not mean that any necessary planning, building regulations or other consent has been obtained. A buyer or lessee must find out by inspection or in other ways that these matters have been properly dealt with and that all information is correct. 4. VAT: The VAT position relating to the property may change without notice. 5. To find out how we process Personal Data, please refer to our Group Privacy Statement and other notices at <https://www.knightfrank.com/legal/privacy-statement>. Particulars dated July 2024. Photographs and videos dated July 2024.

All information is correct at the time of going to print. Knight Frank is the trading name of Knight Frank LLP. Knight Frank LLP is a limited liability partnership registered in England and Wales with registered number OC305934. Our registered office is at 55 Baker Street, London W1U 8AN. We use the term 'partner' to refer to a member of Knight Frank LLP, or an employee or consultant. A list of members names of Knight Frank LLP may be inspected at our registered office. If you do not want us to contact you further about our services then please contact us by either calling 020 3544 0692, email to marketing.help@knightfrank.com or post to our UK Residential Marketing Manager at our registered office (above) providing your name and address. Brochure by wordperfectprint.com





Date: 24 July 2024
Our reference: STR012369600

Drakeshill, Birmingham Road, Kenilworth, CV8 1PT

We have pleasure in enclosing details of the above property for which we are quoting a guide price of £1,375,000.

Please let us know if you need any further information about the property or surrounding area and we will be delighted to provide it.

Full details of all our properties and a wide range of services can be viewed online at knightfrank.co.uk. You can also receive early information on new properties coming on to the market by signing up to [My Knight Frank](#).

For additional information or to make arrangements to view the property, please get in touch.

We'd love to help you.

Yours faithfully



KNIGHT FRANK LLP

Enc:

Samantha Bysouth
Associate
+44 1789 206 953
samantha.bysouth@knightfrank.com

Knight Frank, Stratford
Bridgeway House, Bridgeway, Stratford upon Avon, CV37 6YX
+44 1789 297 735

knightfrank.co.uk

Your partners in property

Knight Frank LLP is a limited liability partnership registered in England and Wales with registered number OC305934. Our registered office is at 55 Baker Street, London W1U 8AN. We use the term 'partner' to refer to a member of Knight Frank LLP, or an employee or consultant. A list of members' names of Knight Frank LLP may be inspected at our registered office.

Regulated by RICS

V4.2 Feb 24