



2 Hawkes Hill Close, Norton Lindsey, Warwickshire





An attractive four bedroom family home in a **quiet position** within the desirable village of Norton Lindsey, close to Warwick.

Distances

M40 (J15) 3 miles, Warwick town centre 4 miles, Warwick Parkway Station 3.7 miles, Stratford-upon-Avon 7.5 miles, Coventry 16 miles, Birmingham International Airport 27 miles (All distances and time are approximate)

Situation

Norton Lindsey is a popular village set midway between Stratford-upon-Avon, the county town of Warwick and Henley-in-Arden. The M40 motorway is approximately three miles away giving ready access to the motorway network, Birmingham, London and Coventry. The village has a community-owned shop, church, public house, village hall and highly sought-after primary school. There is an active Cricket Club and a village shop in Snitterfield about two miles away.



4



2



2



1/2

EPC

D

Tenure

Freehold

Local Authority

Stratford-on-Avon District Council

Council Tax

Band F



There are more extensive shopping and recreational facilities in the nearby towns of Warwick, Leamington Spa and Stratford-upon-Avon, which is the cultural centre of Warwickshire and the home of the Royal Shakespeare Company.

The area has an excellent range of state, private and grammar schools including Stratford Prep School and The Croft Prep School in Stratford-upon-Avon; Warwick Prep School and Public School and King's High School for Girls in Warwick; and in Leamington Spa, Kingsley School for Girls and Arnold Lodge.

There are racecourses at Warwick and Stratford-upon-Avon, with golf at The Warwickshire in Leek Wootton and The Welcombe at Stratford-upon-Avon.

The property

2 Hawkes Hill Close is an excellent family home built in 2007, forming part of a lovely small development in this popular village. The property enjoys a semi-rural setting, yet Warwick town centre is on your doorstep. It is conveniently situated for the motorway network and Warwick Parkway train station for the commuter. Hawkes Hill Close comprises of 11 individual properties in a courtyard setting on the outskirts of Norton Lindsey.

The property is located in the far-left corner of the development and has lovely countryside views to the rear. The front door opens into an entrance hallway with a full-height ceiling and galleried landing above. Oak doors lead off to all of the rooms including a guest cloakroom and a useful storage cupboard.

Wooden flooring continues from the hallway into a generous, impressive drawing room with a log burner and brick fireplace. A further vaulted seating area/garden room overlooks the garden with two sets of double doors opening on to the terrace.

The open-plan kitchen/dining room has tiled flooring. A study with fitted furniture is just off the dining area and could be used as a snug or small playroom. The kitchen features granite worktops, a central island with further storage and integrated appliances, including a Neff combi oven, oven, microwave, hob and dishwasher. There is plenty of space for a large dining table and double doors lead you to the side garden and patio.

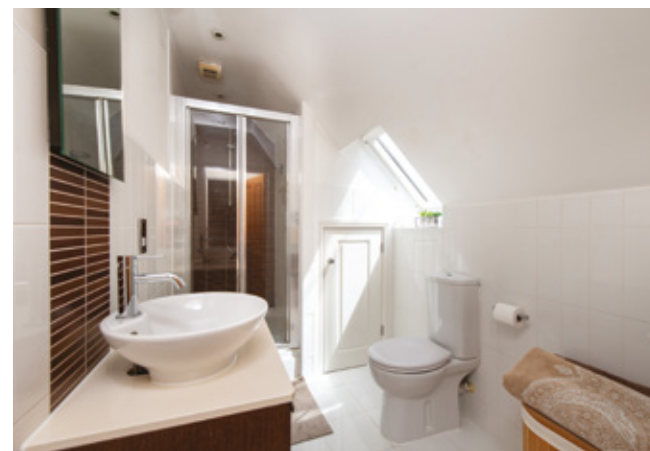




The utility is accessed from the kitchen and has a basin, space and plumbing for a washing machine and dryer. From here, a door leads to a store room with hobby room off. The hobby room has large wooden double doors which open to the garden so it has various uses. These two areas form part of the original garage, and there is a remaining single garage with up-and-over door. The hobby room and store room could be converted back to garage space if required.

Upstairs, the principal bedroom has a rear aspect, built in cupboards, a walk-in dressing room and an en suite shower room. The views from here are lovely. There are two further double bedrooms with built-in cupboards, a smaller double and a family bathroom with shower over the bath. On the landing there is an airing cupboard and a further storage cupboard.







The garden wraps around two sides of the property and has been beautifully landscaped with well-stocked borders and contemporary double slatted fencing. There are various seating areas including a terrace just off the kitchen, which is great for entertaining. A further large terrace overlooks the remaining garden and countryside beyond, and there is a pathway with steps leading down to a further terrace where the current owners have a covered garden gazebo.

Parking is available for a couple of cars in front of the two garage doors.

Services

Mains electricity, water and drainage. Gas fired central heating.

Hawkes Hill is a private close and is run by the residents. The communal areas are maintained by a gardener and the current contribution is a nominal fee per annum.

Directions (CV35 8JZ)

What3words: ///reduction.snuggled.ankle

Viewing

By prior appointment only with the agents.





Approximate Gross Internal Floor Area

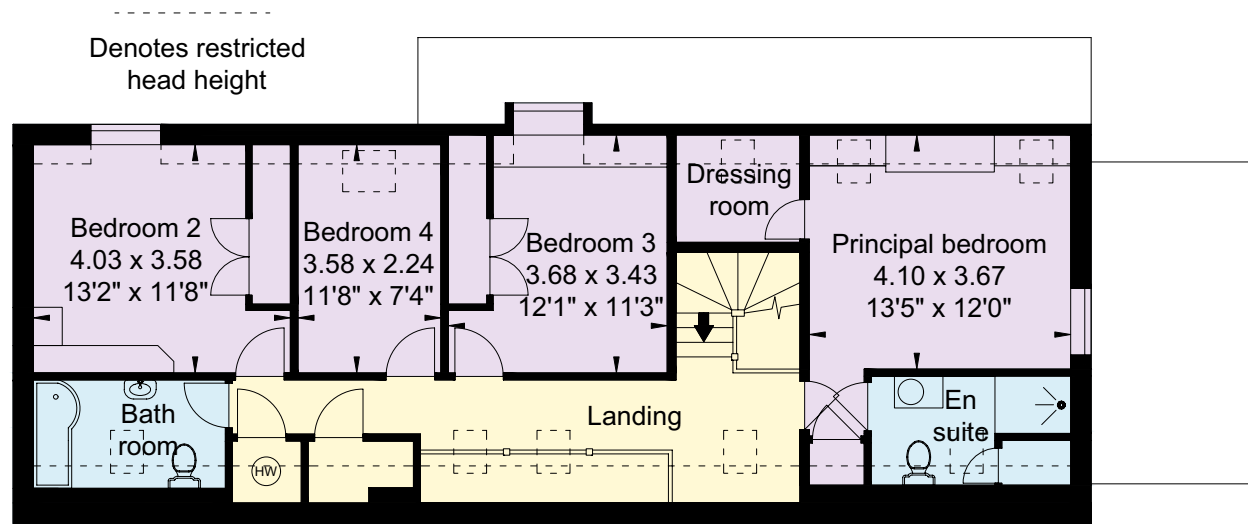
House: 192 sq m (2,067 sq ft)

Garage/Storage/Hobby room: 34 sq m (366 sq ft)

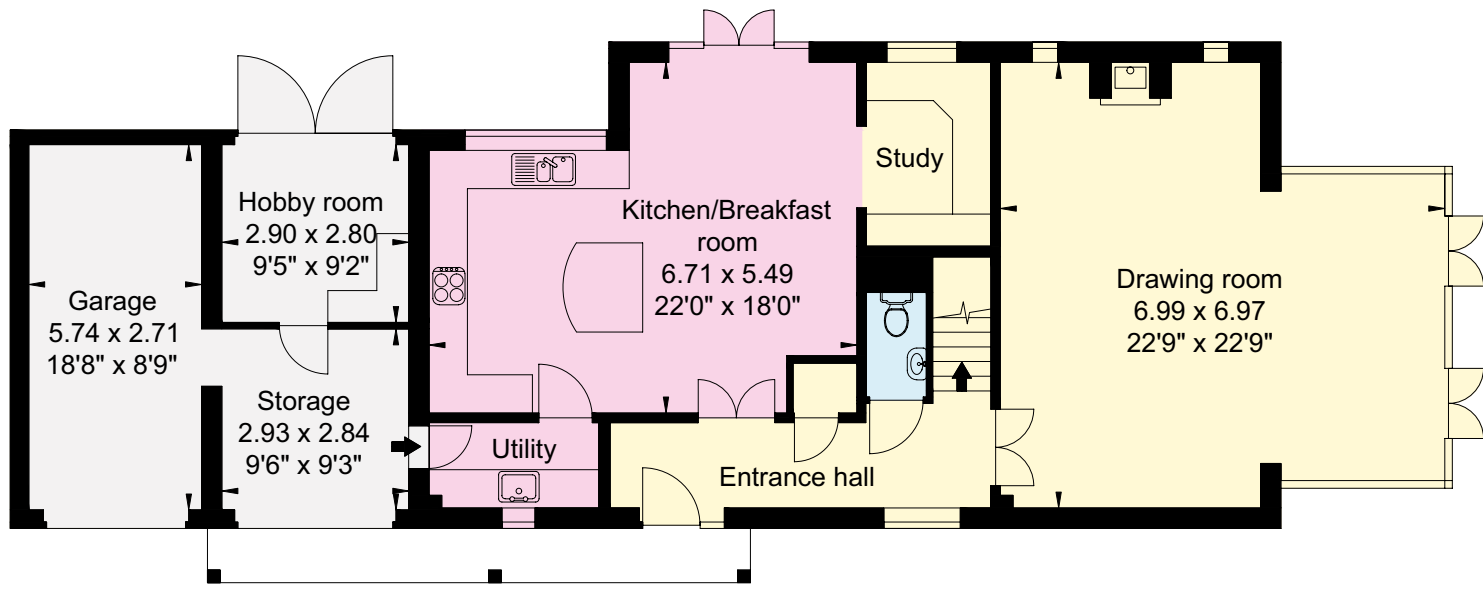
Total: 226 sq m (2,433 sq ft)

This plan is for guidance only and must not be relied upon as a statement of fact. Attention is drawn to the Important Notice on the last page of the text of the Particulars.

- Reception
- Bedroom
- Bathroom
- Kitchen/Utility
- Storage
- Outside



First Floor



Ground Floor



Knight Frank Stratford-upon-Avon
Bridgeway House, Bridgeway
Stratford-upon-Avon
Warwickshire CV37 6YX
[knightfrank.co.uk](https://www.knightfrank.co.uk)

I would be delighted to tell you more

Samantha Bysouth
01789 297735
samantha.bysouth@knightfrank.com

Fixtures and fittings: A list of the fitted carpets, curtains, light fittings and other items fixed to the property which are included in the sale (or may be available by separate negotiation) will be provided by the Seller's Solicitors. Important Notice: 1. Particulars: These particulars are not an offer or contract, nor part of one. You should not rely on statements by Knight Frank LLP in the particulars or by word of mouth or in writing ("information") as being factually accurate about the property, its condition or its value. Neither Knight Frank LLP nor any joint agent has any authority to make any representations about the property, and accordingly any information given is entirely without responsibility on the part of the agents, seller(s) or lessor(s). 2. Photos, Videos etc: The photographs, property videos and virtual viewings etc. show only certain parts of the property as they appeared at the time they were taken. Areas, measurements and distances given are approximate only. 3. Regulations etc: Any reference to alterations to, or use of, any part of the property does not mean that any necessary planning, building regulations or other consent has been obtained. A buyer or lessee must find out by inspection or in other ways that these matters have been properly dealt with and that all information is correct. 4. VAT: The VAT position relating to the property may change without notice. 5. To find out how we process Personal Data, please refer to our Group Privacy Statement and other notices at <https://www.knightfrank.com/legal/privacy-statement>.

Particulars dated July 2024. Photographs and videos dated July 2024.

All information is correct at the time of going to print. Knight Frank is the trading name of Knight Frank LLP. Knight Frank LLP is a limited liability partnership registered in England and Wales with registered number OC305934. Our registered office is at 55 Baker Street, London W1U 8AN. We use the term 'partner' to refer to a member of Knight Frank LLP, or an employee or consultant. A list of members names of Knight Frank LLP may be inspected at our registered office. If you do not want us to contact you further about our services then please contact us by either calling 020 3544 0692, email to marketing.help@knightfrank.com or post to our UK Residential Marketing Manager at our registered office (above) providing your name and address. Brochure by [wordperfectprint.com](https://www.wordperfectprint.com)



Date: 23 July 2024
Our reference: STR012435200

2 Hawkes Hill Close, Norton Lindsey, Warwick, CV35 8JZ

We have pleasure in enclosing details of the above property for which we are quoting a guide price of £895,000.

Please let us know if you need any further information about the property or surrounding area and we will be delighted to provide it.

Full details of all our properties and a wide range of services can be viewed online at knightfrank.co.uk. You can also receive early information on new properties coming on to the market by signing up to [My Knight Frank](#).

For additional information or to make arrangements to view the property, please get in touch.

We'd love to help you.

Yours faithfully



KNIGHT FRANK LLP

Enc:

Samantha Bysouth
Associate
+44 1789 206 953
samantha.bysouth@knightfrank.com

Knight Frank, Stratford
Bridgeway House, Bridgeway, Stratford upon Avon, CV37 6YX
+44 1789 297 735

knightfrank.co.uk

Your partners in property

Knight Frank LLP is a limited liability partnership registered in England and Wales with registered number OC305934. Our registered office is at 55 Baker Street, London W1U 8AN. We use the term 'partner' to refer to a member of Knight Frank LLP, or an employee or consultant. A list of members' names of Knight Frank LLP may be inspected at our registered office.

Regulated by RICS

V4.2 Feb 24