



65 Willes Road, Leamington Spa, Warwickshire





A **detached Victorian villa** in Leamington Spa located south of the river, within easy reach of the town centre and train station.

Distances

Leamington Spa (trains to London Marylebone from 71 mins and Birmingham from 31 mins), Warwick 2.5 miles, Warwick Parkway Station 2.5 miles (trains to London Marylebone from 69 mins), M40 (J13 & J15) 4 miles, Stratford-upon-Avon 11 miles, Coventry 8.4 miles (trains to London Euston from 61 mins), Birmingham International Airport 17 miles, Birmingham City Centre 18 miles (all distances and times are approximate)

Situation

Located at the top of Willes Road, a short walk from Leamington Spa town centre, the river Leam and Welches meadow. The property is just a short walk from Leamington station. For the commuter, trains run from Leamington Spa to Birmingham and London Marylebone and the motorway network is accessible at junction 13, 14 and 15 of the M40 with Birmingham to the north and London to the south.



Tenure
Freehold

Local Authority
Warwick District Council

Council Tax
Band G



Leamington Spa is famous for its Jephson Gardens on the banks of the River Leam and throughout the town there is evidence of the Victorian and Georgian heritage for which Leamington is renowned.

The area has some excellent schools, most notably Arnold Lodge and Kingsley School for Girls in Leamington Spa, Warwick Boys School, Kings High School for Girls.

The property

65 Willes Road is a detached Grade II listed family home occupying a corner position on Willes Road and Innage Close, with a beautiful walled garden. Built in 1834, this excellent family home offers generous accommodation over three floors, totalling more than 3,000 sq ft, plus a small cellar.

The front door opens into the entrance hallway, which has a newly fitted limestone floor that continues into the brand new kitchen. The kitchen has been handmade in frame by Christopher Peters and has underfloor heating, a large central island, quartz worktops, bespoke cabinetry and new doors opening onto the garden. Integrated appliances include a Rangemaster cooker, Fisher & Paykel two-drawer dishwasher, Fisher & Paykel fridge and a Caple wine fridge.





A handy boot room is located by the side door, and there is a separate utility and guest cloakroom.

The large drawing room opens into the study, and French doors open to the garden. The elegant drawing room has a front aspect, a large sash window and a log burner. The sitting room has a front aspect, a bay window with shutters, a window seat, and an open fireplace. Lovely high ceilings are noted throughout.

Upstairs, the principal bedroom has a front aspect, fireplace and small built in wardrobe cupboard. There are three further large double bedrooms, two bathrooms with showers and a separate wc on the rear landing. A separate staircase provides access to bedroom six which is currently used as an office.

On the second floor, accessed via a separate staircase, is a further double bedroom, which would make a great teenage room with space for a sofa. There is scope to add an en suite upstairs, which forms part of the planning permission which has been applied for.





Garden

The rear east-facing garden is entirely walled and mainly laid to lawn, with York stone paving. Gated access at the bottom of the garden gives a buyer the option to park a car on the rear patio. However, there is parking on the Innage Close, a private road. Part of the planning permission that has been applied for is to create an off street parking place by the side gate and put electric gates in. An entrance straight to Welches Meadow via the back gate is excellent for dog walks. An electric charging point has been fitted to the side of the property.



Planning permission

Planning permission has just been being submitted to Warwick District Council for internal and external alterations. Ref (W/24/O456 LB)

Services

All mains services are connected to the property. Gas fired central heating.

Directions (CV31 IBW)

What3words:///decide.beard.natively

Viewing

By prior appointment only with the agents.

Knight Frank Stratford-upon-Avon
 Bridgeway House, Bridgeway
 Stratford-upon-Avon
 Warwickshire CV37 6YX
knightfrank.co.uk

I would be delighted to tell you more

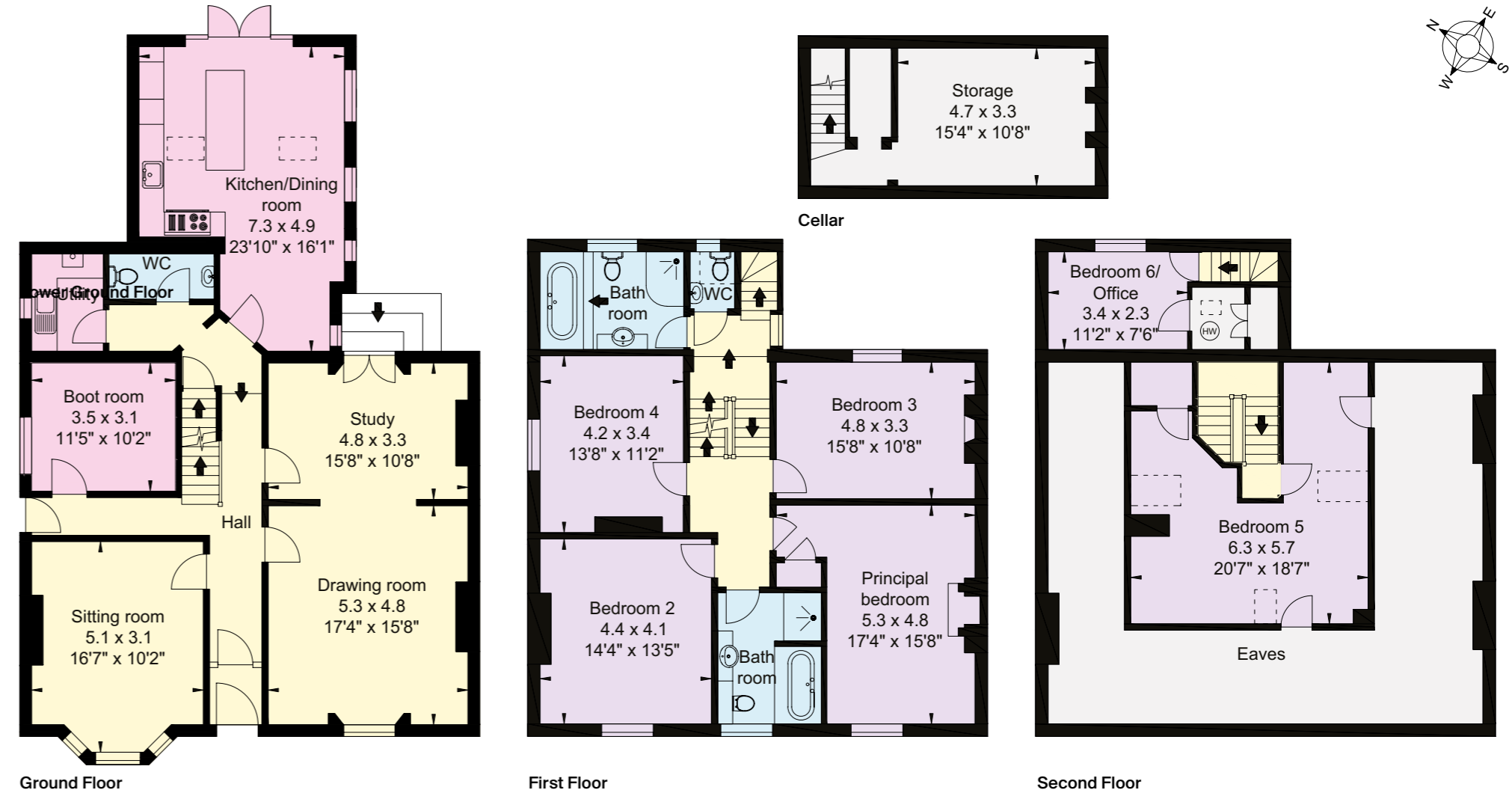
Samantha Bysouth
 01789 297735
samantha.bysouth@knightfrank.com



Fixtures and fittings: A list of the fitted carpets, curtains, light fittings and other items fixed to the property which are included in the sale (or may be available by separate negotiation) will be provided by the Seller's Solicitors.
 Important Notice: 1. Particulars: These particulars are not an offer or contract, nor part of one. You should not rely on statements by Knight Frank LLP in the particulars or by word of mouth or in writing ("information") as being factually accurate about the property, its condition or its value. Neither Knight Frank LLP nor any joint agent has any authority to make any representations about the property, and accordingly any information given is entirely without responsibility on the part of the agents, seller(s) or lessor(s). 2. Photos, Videos etc: The photographs, property videos and virtual viewings etc. show only certain parts of the property as they appeared at the time they were taken. Areas, measurements and distances given are approximate only. 3. Regulations etc: Any reference to alterations to, or use of, any part of the property does not mean that any necessary planning, building regulations or other consent has been obtained. A buyer or lessee must find out by inspection or in other ways that these matters have been properly dealt with and that all information is correct. 4. VAT: The VAT position relating to the property may change without notice. 5. To find out how we process Personal Data, please refer to our Group Privacy Statement and other notices at <https://www.knightfrank.com/legals/privacy-statement>. Particulars dated April 2024, Photographs and videos dated April 2024.
 All information is correct at the time of going to print. Knight Frank is the trading name of Knight Frank LLP. Knight Frank LLP is a limited liability partnership registered in England and Wales with registered number OC305934. Our registered office is at 55 Baker Street, London W1U 8AN. We use the term 'partner' to refer to a member of Knight Frank LLP, or an employee or consultant. A list of members names of Knight Frank LLP may be inspected at our registered office. If you do not want us to contact you further about our services then please contact us by either calling 020 3544 0692, email to marketing.help@knightfrank.com or post to our UK Residential Marketing Manager at our registered office (above) providing your name and address. Brochure by wordperfectprint.com

Approximate Gross Internal Floor Area 315 sq m (3,392 sq ft)

This plan is for guidance only and must not be relied upon as a statement of fact. Attention is drawn to the Important Notice on the last page of the text of the Particulars.





Date: 16 April 2024
Our reference: STR012457806

65 Willes Road, Leamington Spa, CV31 1BW

We have pleasure in enclosing details of the above property for which we are quoting a guide price of £1,350,000.

Please let us know if you need any further information about the property or surrounding area and we will be delighted to provide it.

Full details of all our properties and a wide range of services can be viewed online at knightfrank.co.uk. You can also receive early information on new properties coming on to the market by signing up to [My Knight Frank](#).

For additional information or to make arrangements to view the property, please get in touch.

We'd love to help you.

Yours faithfully



KNIGHT FRANK LLP

Enc:

Samantha Bysouth
Associate
+44 1789 206 953
samantha.bysouth@knightfrank.com

Knight Frank, Stratford
Bridgeway House, Bridgeway, Stratford upon Avon, CV37 6YX
+44 1789 297 735

knightfrank.co.uk

Your partners in property

Knight Frank LLP is a limited liability partnership registered in England and Wales with registered number OC305934. Our registered office is at 55 Baker Street, London W1U 8AN. We use the term 'partner' to refer to a member of Knight Frank LLP, or an employee or consultant. A list of members' names of Knight Frank LLP may be inspected at our registered office.

Regulated by RICS

V4.2 Feb 24