




30 CHARLBURY ROAD

Oxford



A DETACHED HOUSE REQUIRING RENOVATION, FORMERLY THE HOME OF IRIS MURDOCH

The house lies on the favoured west side of the road and requires complete renovation/extension. It is set back from the road and has accommodation over two floors, comprising 2110 square feet, including the garage.

			EPC
4	2	2-3	E

Local Authority: Oxford City Council
Council Tax band: G
Postcode: OX2 6UU
Tenure: Freehold

LOCATION

Charlbury Road is a prime residential road in the heart of the North Oxford Victorian Conservation Area. It is well positioned for Oxford's excellent range of schools with the Dragon, Wychwood and Oxford High School within walking distance and St Edward's, Magdalen, Headington Girls School, and Summer Fields within easy reach. It is close to University Parks for lovely walks along the river. There is good access to Summertown's day-to-day shopping facilities, including Marks & Spencer Food Hall, two other supermarkets, artisan bakers and coffee shops, bars and restaurants and the popular Nuffield Health and Racquets Club. There are also dentist and doctor surgeries.

There is a farmers market every two weeks in North Parade and in Jericho, there are two small supermarkets, a number of individual shops, the Phoenix Picturehouse cinema and a number of bars and restaurants. The Woodstock and Banbury roads join directly to the Oxford ring road connecting to the A40 and M40 to London. The Oxford rail station has regular services directly to London Paddington (approximately 53 minutes), and Oxford Parkway station has services to London Marylebone (approximately 62 minutes).

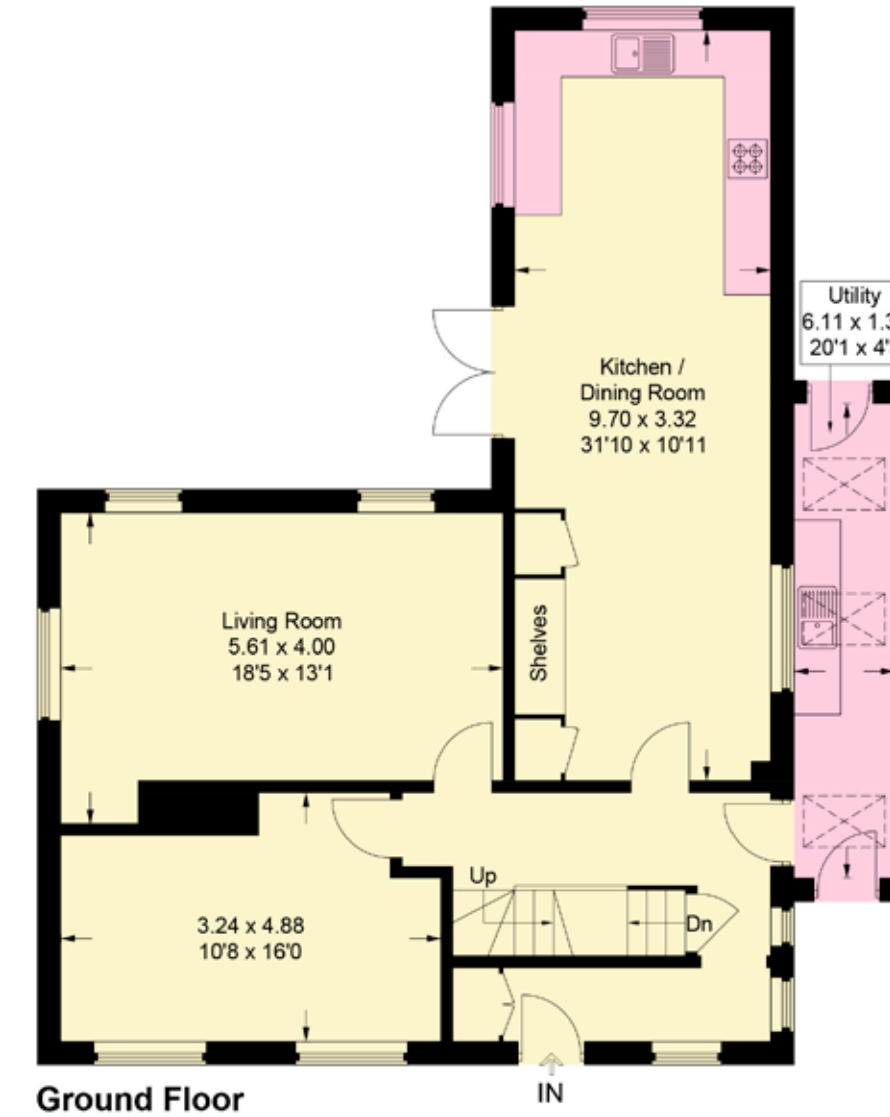


PROPERTY

The ground floor has the entrance hall, a study, the sitting room and a kitchen/breakfast room together with a utility room. The first floor comprises four bedrooms, a bathroom and a shower room. The garage is to the side of the house. The garden is west-facing and approached from the kitchen and the side of the house. Iris Murdoch was a celebrated novelist and philosopher who lived at the house from 1989 to her death in 1999. Her first published novel, *Under the Net* (1954), was selected in 1998 as one of Modern Library's 100 best English-language novels of the 20th century. Her 1978 novel *The Sea, The Sea* won the Booker Prize. In 1987, she was made a Dame by Queen Elizabeth II for services to literature. In 2008, *The Times* ranked Murdoch twelfth on a list of "The 50 greatest British writers since 1945". She was married to the academic, literary critic and author Professor John Bayley for 43 years until her death. The house has a Blue Plaque to celebrate her.







Approximate Gross Internal Area = 196 sq m / 2,110 sq ft

This plan is for layout guidance only. Not drawn to scale unless stated. Windows and door openings are approximate. Whilst every care is taken in the preparation of this plan, please check all dimensions, shapes and compass bearings before making any decisions reliant upon them.

We would be delighted
to tell you more.

William Kirkland
01865 264 865
william.kirkland@knightfrank.com

Knight Frank Oxford
274 Banbury Road
Summertown, Oxford, OX2 7DY

knightfrank.co.uk

Your partners in property

1. Particulars: These particulars are not an offer or contract, nor part of one. You should not rely on statements given by Knight Frank in the particulars, by word of mouth or in writing ("information") as being factually accurate about the property, its condition or its value. Neither Knight Frank nor any joint agent has any authority to make any representations about the property, and accordingly any information given is entirely without responsibility on the part of Knight Frank. 2. Material Information: Please note that the material information is provided to Knight Frank by third parties and is provided here as a guide only. While Knight Frank has taken steps to verify this information, we advise you to confirm the details of any such material information prior to any offer being submitted. If we are informed of changes to this information by the seller or another third party, we will use reasonable endeavours to update this as soon as practical. 3. Photos, Videos etc: The photographs, property videos and virtual viewings etc. show only certain parts of the property as they appeared at the time they were taken. Areas, measurements and distances given are approximate only. 4. Regulations etc: Any reference to alterations to, or use of, any part of the property does not mean that any necessary planning, building regulations or other consent has been obtained. A buyer must find out by inspection or in other ways that these matters have been properly dealt with and that all information is correct. 5. Fixtures and fittings: A list of the fitted carpets, curtains, light fittings and other items fixed to the property which are included in the sale (or may be available by separate negotiation) will be provided by the Seller's Solicitors. 6. VAT: The VAT position relating to the property may change without notice. 7. To find out how we process Personal Data, please refer to our Group Privacy Statement and other notices at <https://www.knightfrank.com/legals/privacy-statement>.

Particulars dated April 2025. Photographs and videos dated May 2025. All information is correct at the time of going to print. Knight Frank is the trading name of Knight Frank LLP. Knight Frank LLP is a limited liability partnership registered in England and Wales with registered number OC305934. Our registered office is at 55 Baker Street, London W1U 8AN. We use the term 'partner' to refer to a member of Knight Frank LLP, or an employee or consultant. A list of members names of Knight Frank LLP may be inspected at our registered office. If you do not want us to contact you further about our services then please contact us by either calling 020 3544 0692, email to marketing.help@knightfrank.com or post to our UK Residential Marketing Manager at our registered office (above) providing your name and address.