



## WEAVERS COTTAGE




Great Milton, Oxfordshire





# A BEAUTIFUL COTTAGE ON THE GREEN IN THE HEART OF THE VILLAGE.

A picturesque Grade II listed cottage of over 2000sqft with detached garage on the green in this popular Oxfordshire Village, Great Milton.

			EPC
4	2	2	C

Local Authority: South Oxfordshire  
Council Tax band: F



# THE PROPERTY

This home has been lovingly extended and modernised over the years into a spacious home still with a wealth of traditional features including exposed beams, thatched roof and wood burner. To the rear there is a generous well presented garden.

# SITUATION

Great Milton is one of South Oxfordshire's most sought-after villages, lying between the Chiltern Hills and the city of Oxford. The village is conveniently placed for both a London commute and country living. Great Milton has a number of local facilities, including a village school, two churches and a public house as well as the renowned hotel and double Michelin-starred restaurant Le Manoir aux Quat'Saisons. The nearby village of Wheatley has a supermarket (Asda) and a Post Office. A more comprehensive range of services can be found in Oxford and Thame, with the nearby M40 providing easy access to Oxford, the Midlands and London. Wallingford, Didcot, Reading, and Henley onThames are all within easy reach, alongside the highly regarded Oxford schools, including The Dragon, Summer Fields School, Headington School, Rye St Antony, Magdalen College School, Oxford High School, d'Overbroeck's, and St Edward's School amongst many others. Rupert House in Henley and Mouldsford Prep School in Wallingford are also within easy reach.



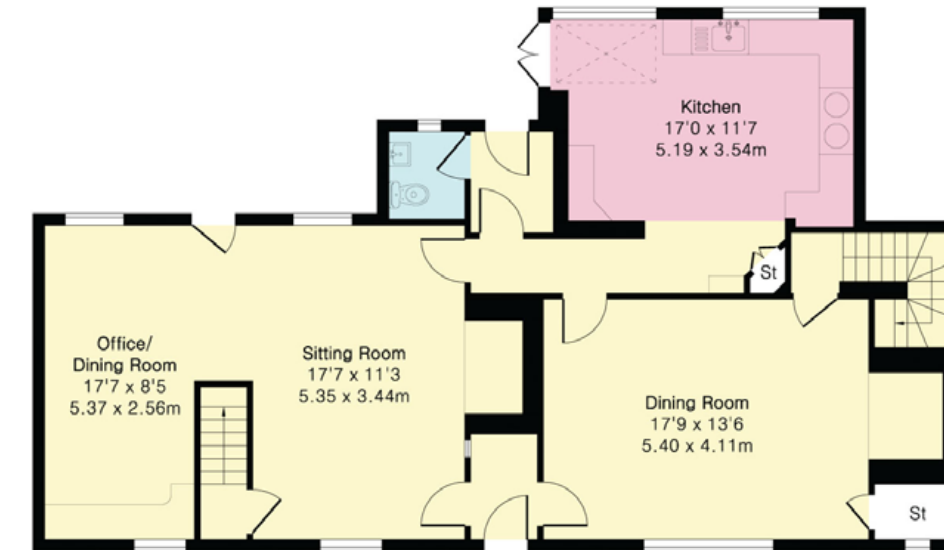












Ground Floor



First Floor

Approximate Gross Internal Area = 198 sq m / 2125 sq ft  
 Ground Floor Area = 101 sq m / 1083 sq ft  
 First Floor Area = 97 sq m / 1042 sq ft

This plan is for layout guidance only. Not drawn to scale unless stated. Windows and door openings are approximate. Whilst every care is taken in the preparation of this plan, please check all dimensions, shapes and compass bearings before making any decisions reliant upon them. (ID767266)



We would be delighted  
to tell you more.

**Oliver Saxton**  
01865 264 862  
[oliver.saxton@knightfrank.com](mailto:oliver.saxton@knightfrank.com)

**Knight Frank Oxford**  
274 Banbury Road  
Summertown, Oxford, OX2 7DY

[knightfrank.co.uk](https://knightfrank.co.uk)

Your partners in property

1. Particulars: These particulars are not an offer or contract, nor part of one. You should not rely on statements given by Knight Frank in the particulars, by word of mouth or in writing ("information") as being factually accurate about the property, its condition or its value. Neither Knight Frank nor any joint agent has any authority to make any representations about the property, and accordingly any information given is entirely without responsibility on the part of Knight Frank. 2. Material Information: Please note that the material information is provided to Knight Frank by third parties and is provided here as a guide only. While Knight Frank has taken steps to verify this information, we advise you to confirm the details of any such material information prior to any offer being submitted. If we are informed of changes to this information by the seller or another third party, we will use reasonable endeavours to update this as soon as practical. 3. Photos, Videos etc: The photographs, property videos and virtual viewings etc. show only certain parts of the property as they appeared at the time they were taken. Areas, measurements and distances given are approximate only. 4. Regulations etc: Any reference to alterations to, or use of, any part of the property does not mean that any necessary planning, building regulations or other consent has been obtained. A buyer must find out by inspection or in other ways that these matters have been properly dealt with and that all information is correct. 5. Fixtures and fittings: A list of the fitted carpets, curtains, light fittings and other items fixed to the property which are included in the sale (or may be available by separate negotiation) will be provided by the Seller's Solicitors. 6. VAT: The VAT position relating to the property may change without notice. 7. To find out how we process Personal Data, please refer to our Group Privacy Statement and other notices at <https://www.knightfrank.com/legals/privacy-statement>.

Particulars dated May 2025. Photographs and videos dated May 2025. All information is correct at the time of going to print. Knight Frank is the trading name of Knight Frank LLP. Knight Frank LLP is a limited liability partnership registered in England and Wales with registered number OC305934. Our registered office is at 55 Baker Street, London W1U 8AN. We use the term 'partner' to refer to a member of Knight Frank LLP, or an employee or consultant. A list of members names of Knight Frank LLP may be inspected at our registered office. If you do not want us to contact you further about our services then please contact us by either calling 020 3544 0692, email to [marketing.help@knightfrank.com](mailto:marketing.help@knightfrank.com) or post to our UK Residential Marketing Manager at our registered office (above) providing your name and address.