



## THE GLOVE HOUSE

Woodstock, Oxfordshire





## A HANDSOME GRADE II LISTED FAMILY HOUSE WITH A DETACHED ONE-BEDROOM ANNEXE, NESTLED ON THE EDGE OF BLENHEIM PALACE'S HISTORIC PARKLAND.



4-5



3-4



3-4

EPC

E

Local Authority: West Oxfordshire District Council

Council Tax band: G

Services: Mains gas, water, electricity and drainage

Tenure: Freehold





## THE PROPERTY

Discreetly positioned behind elegant wrought-iron railings, this exceptional period home, once an Edwardian boxing glove factory, effortlessly combines architectural heritage with contemporary family living. Set across three beautifully presented storeys, the property has five bedrooms, three reception rooms, and a superb open-plan kitchen/dining room, all south-facing and flooded with natural light.

The interior showcases a wealth of original period features, including flagstone floors, exposed timbers, window shutters, and wall panelling, creating an enduring charm and warm atmosphere. The inviting entrance hall leads to a generous drawing room with bespoke fitted bookcases. At the same time, the country-style kitchen is ideal for entertaining, complemented by a practical utility room and cloakroom.

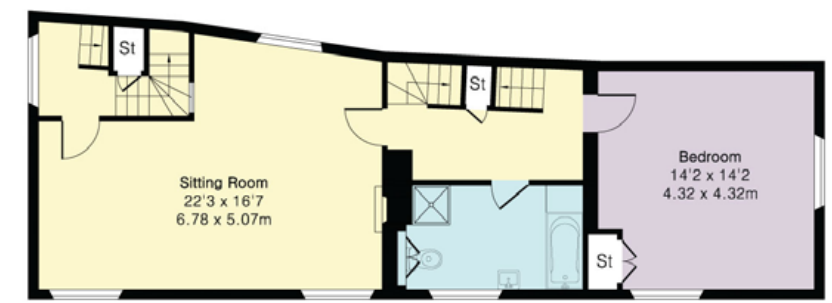
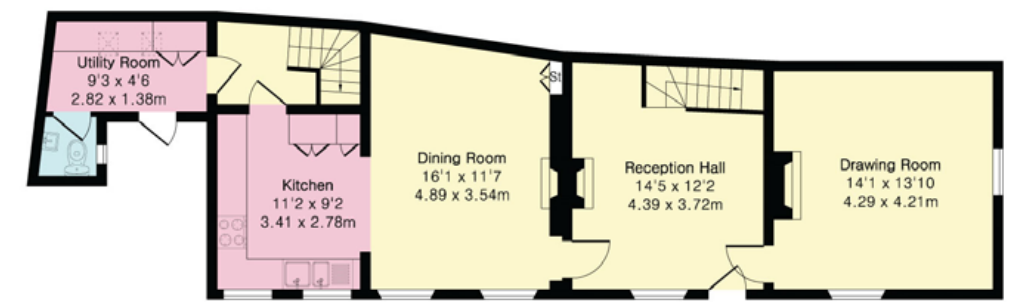
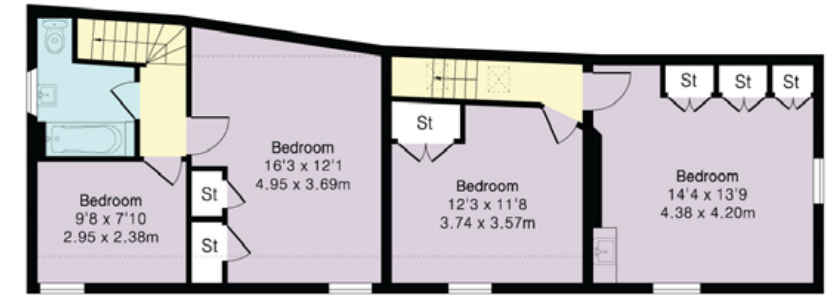


## THE LOCATION

Woodstock is a well-connected and thriving market town located northwest of Oxford, on the edge of the Blenheim Palace Estate. Residents benefit from pedestrian access to the estate grounds via a walking pass. The town offers a strong sense of community and a well-preserved historic centre, which includes a Post Office, churches of various denominations, and a diverse selection of shops, hotels, restaurants, and public houses.

Woodstock is served by several reputable local schools and childcare facilities and provides convenient access to Oxford's leading independent schools, including St Edward's, Summer Fields, The Dragon, Oxford High School, Headington School, and Radley College. The town is strategically located for access to the M40, the Cotswolds, Stratford-upon-Avon, and is approximately 10 minutes by car from Soho Farmhouse. Oxford Parkway Station is easily accessible by bus services and offers direct trains to London Marylebone in approximately 55 minutes.





Approximate Gross Internal Area = 223 sq m / 2404 sq ft

This plan is for layout guidance only. Not drawn to scale unless stated. Windows and door openings are approximate. Whilst every care is taken in the preparation of this plan, please check all dimensions, shapes and compass bearings before making any decisions reliant upon them. (ID767266)



We would be delighted  
to tell you more.

Harry Sheppard  
01865 264879  
harry.sheppard@knightfrank.com

Knight Frank Oxford  
274 Banbury Road  
Summertown, Oxford, OX2 7DY

knightfrank.co.uk

Your partners in property

1. Particulars: These particulars are not an offer or contract, nor part of one. You should not rely on statements given by Knight Frank in the particulars, by word of mouth or in writing ("information") as being factually accurate about the property, its condition or its value. Neither Knight Frank nor any joint agent has any authority to make any representations about the property, and accordingly any information given is entirely without responsibility on the part of Knight Frank. 2. Material Information: Please note that the material information is provided to Knight Frank by third parties and is provided here as a guide only. While Knight Frank has taken steps to verify this information, we advise you to confirm the details of any such material information prior to any offer being submitted. If we are informed of changes to this information by the seller or another third party, we will use reasonable endeavours to update this as soon as practical. 3. Photos, Videos etc: The photographs, property videos and virtual viewings etc. show only certain parts of the property as they appeared at the time they were taken. Areas, measurements and distances given are approximate only. 4. Regulations etc: Any reference to alterations to, or use of, any part of the property does not mean that any necessary planning, building regulations or other consent has been obtained. A buyer must find out by inspection or in other ways that these matters have been properly dealt with and that all information is correct. 5. Fixtures and fittings: A list of the fitted carpets, curtains, light fittings and other items fixed to the property which are included in the sale (or may be available by separate negotiation) will be provided by the Seller's Solicitors. 6. VAT: The VAT position relating to the property may change without notice. 7. To find out how we process Personal Data, please refer to our Group Privacy Statement and other notices at <https://www.knightfrank.com/legals/privacy-statement>.

Particulars dated May 2025. Photographs and videos dated May 2025. All information is correct at the time of going to print. Knight Frank is the trading name of Knight Frank LLP. Knight Frank LLP is a limited liability partnership registered in England and Wales with registered number OC305934. Our registered office is at 55 Baker Street, London W1U 8AN. We use the term 'partner' to refer to a member of Knight Frank LLP, or an employee or consultant. A list of members names of Knight Frank LLP may be inspected at our registered office. If you do not want us to contact you further about our services then please contact us by either calling 020 3544 0692, email to [marketing.help@knightfrank.com](mailto:marketing.help@knightfrank.com) or post to our UK Residential Marketing Manager at our registered office (above) providing your name and address.