



ANNAWAY

Sibford Road, Epwell, Oxfordshire



A BEAUTIFULLY PRESENTED FAMILY HOME, SITUATED IN THE RURAL NORTH OXFORDSHIRE VILLAGE OF EPWELL

with a gated driveway, double car port with annexe above, and delightful views



Local Authority: Cherwell District Council

Council Tax band: D

Services: Mains electricity, water and drainage are connected to the property. LPG/oil central heating.

Tenure: Freehold

What3words: ///liberty.juicy.fragment

SITUATION

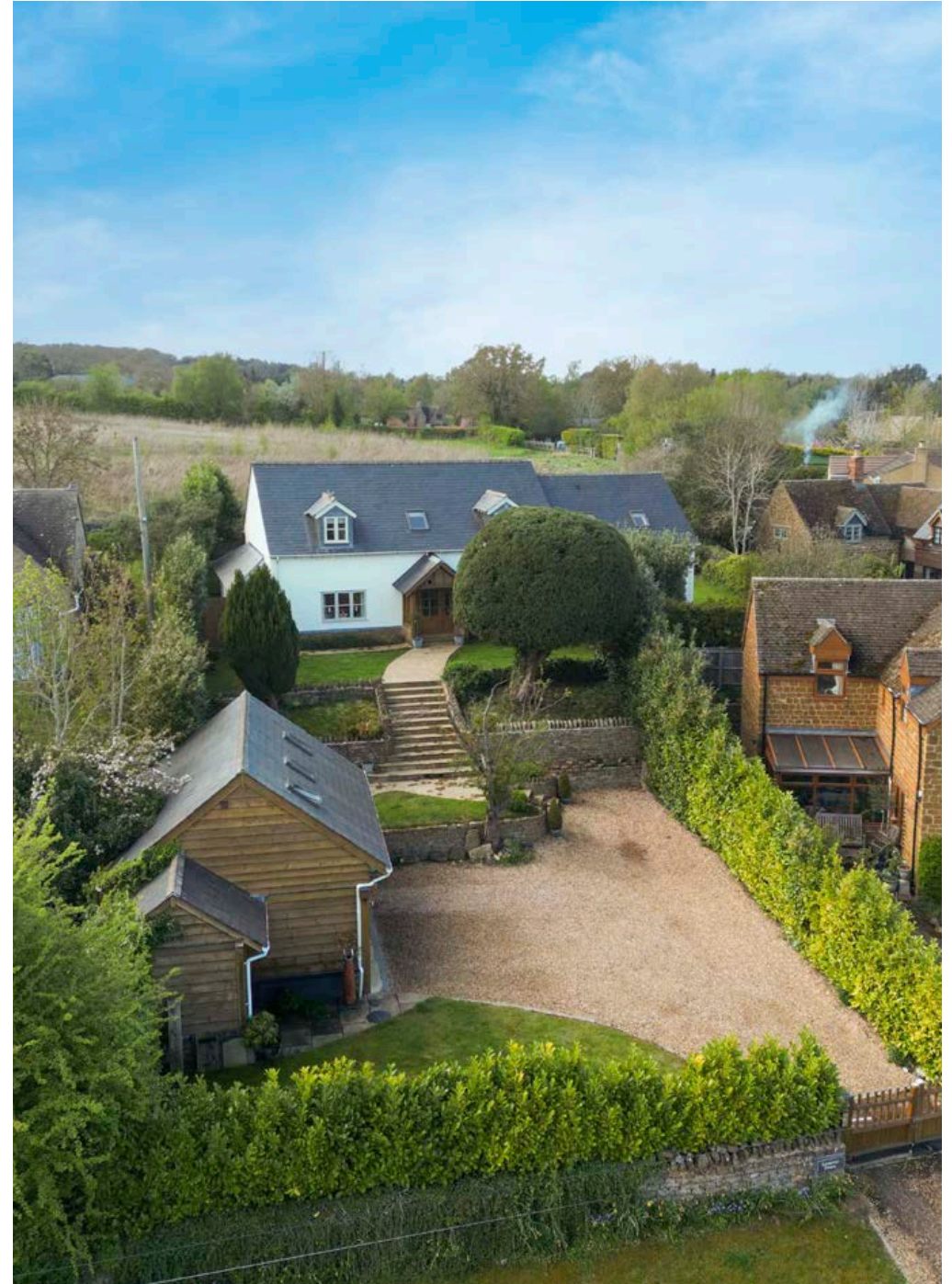
Epwell is a charming and sought-after village in the beautiful north Oxfordshire countryside, within the Cotswolds Area of Outstanding Natural Beauty. The village has attractive period houses and cottages constructed mainly of local Horton ironstone with a parish church, village hall, nursery and renowned Michelin-star restaurant, The Chandlers Arms.

The local surrounding villages of Sibford Gower, Tysoe and Brailes provide additional services, such as village stores and post offices. Banbury and Stratford-upon-Avon, the region's cultural centre and home of the Royal Shakespeare Theatre, provides ample shopping, recreational and dining opportunities.

State, grammar and private schools in the area include Shenington Church of England Primary School, Chipping Campden School with an Outstanding Ofsted rating achieved in April 2024, Sibford School in the nearby Sibford Ferris, Warwick Prep and Public School and King's High School for Girls in Warwick, Tudor Hall School for Girls and Bloxham School near Banbury.

Annaway is well positioned for the commuter, with rail services from Banbury, Warwick, Leamington Spa and Stratford-upon-Avon providing good access to London/Marylebone. The M40, J11 (Banbury) is approximately 12 miles away, and J12 (Gaydon) is approximately 11 miles away, of which provide access to the national motorway system. Birmingham International Airport is about 45 miles away.

There are a number of golf courses in the area. Racing at Stratford, Warwick and Cheltenham, motor racing at Silverstone, and fishing and sailing at Draycote Water.







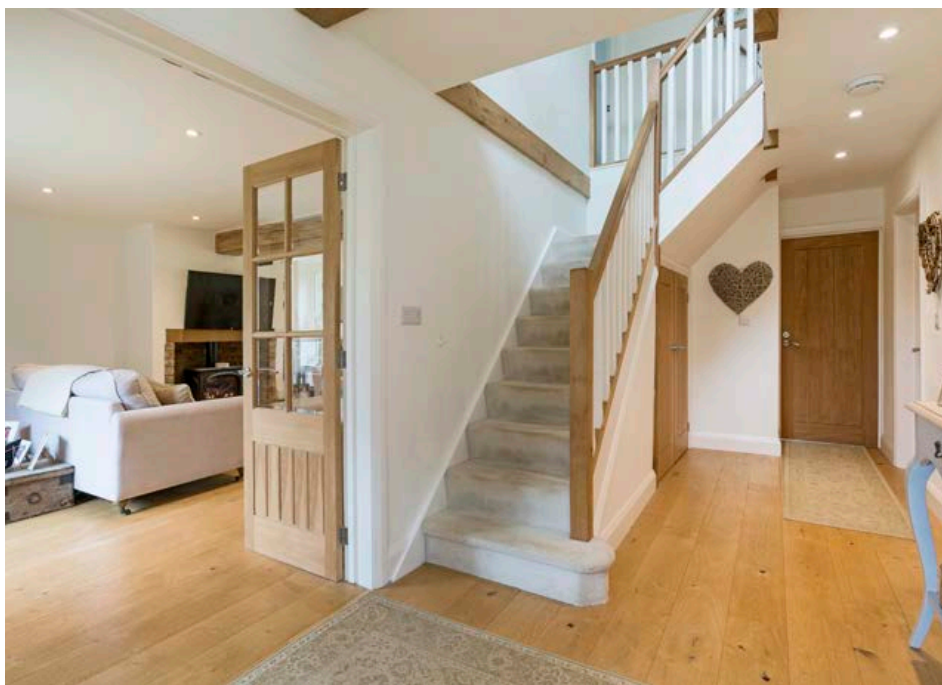


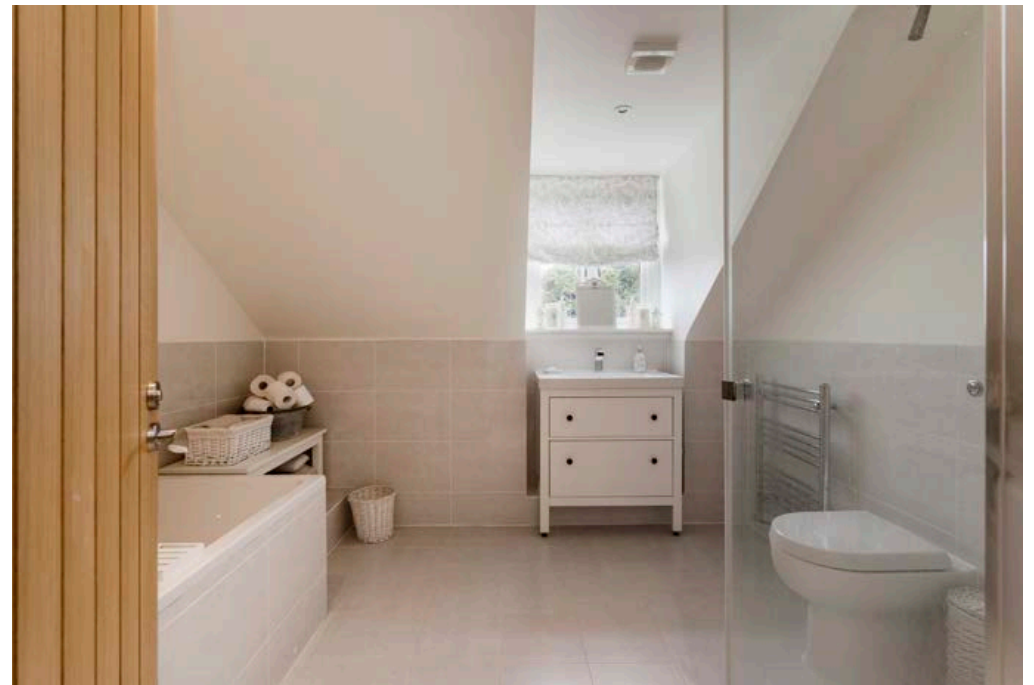
ANNAWAY

Annaway is a lovely, detached property which has been sympathetically refurbished and extended by the current owners and effortlessly blends traditional character and charm with modern day living.

The front door opens to a delightful entrance hall with stairs rising to the first floor. Double doors open to a magnificent, dual aspect, sitting room with feature fireplace housing a wood burner and French doors leading to the patio area and garden beyond. The entrance hall continues to an elegant dining room with a stunning, south-easterly view to the front garden, a modern WC, study with fitted shelving unit and utility room, complete with sink, space for a washing machine and dryer and an external glazed door providing access to the rear garden. Steps lead down to the spacious kitchen/breakfast room; this was an extension to the original house by the current owners, and benefits from an extensive range of wall mounted and base units sat beneath a granite worktop, an island with bar stools, a variety of integrated appliances, double doors and bifold doors that open to the lawned rear garden.

Stairs from the entrance hall rise to the first-floor landing, which provides access to an impressive Principal bedroom suite with glazed double doors opening to a Juliet balcony, a walk-in wardrobe and spacious ensuite shower room. The first floor extends to another generous bedroom with modern ensuite shower room and glazed double doors opening to a Juliet balcony, and two further double bedrooms, both offering different aspects of the beautiful surrounding countryside.







OUTSIDE

Externally, the property is accessed by electric wooden gates which open to a private gravel driveway with ample parking space for several cars. There is a double car port with an annexe above, comprising a shower room and a large room with space for a sitting area and bed, of which provides rental income.

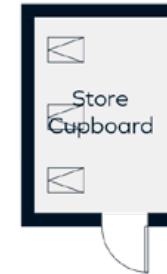
The south-facing rear garden is principally lawned and is bordered partly by a Hornton stone wall and partly by a mature hedgerow, offering privacy and seclusion. A stone paved patio is accessed via the bifold doors in the kitchen, of which leads to the side of the property and provides access to the store.



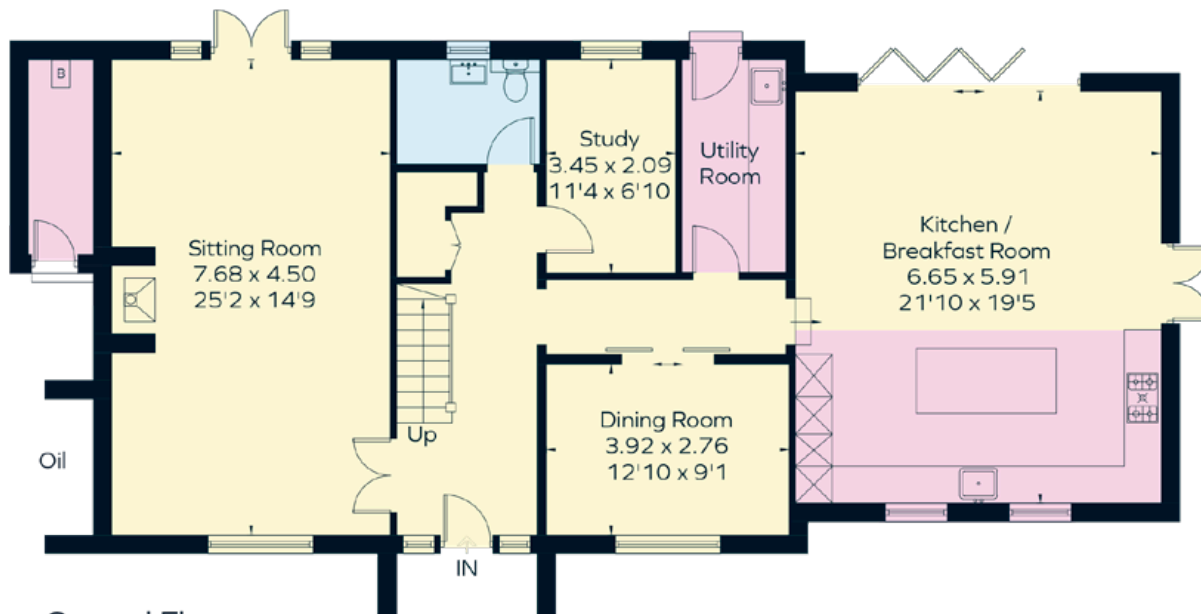


First Floor

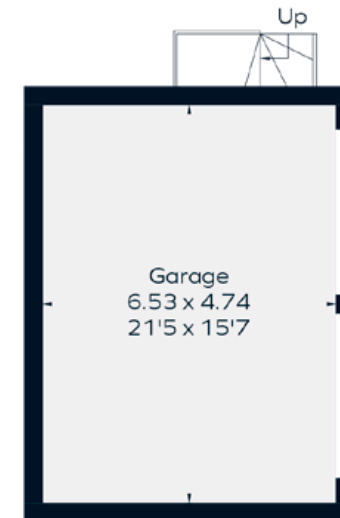
[Symbol] = Reduced head height below 1.5m



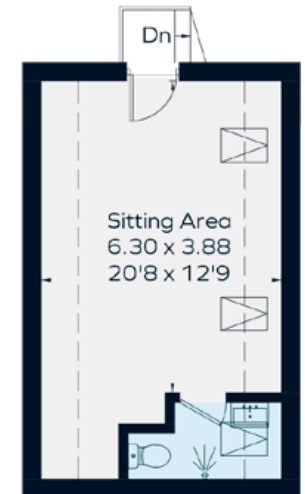
(Not Shown In Actual Location / Orientation)



Ground Floor



(Not Shown In Actual Location / Orientation)
Outbuildings - Ground Floor



Outbuildings - First Floor

Approximate Gross Internal Area

Main House = 240.4 sq m / 2,588 sq ft

Outbuildings = 35.3 sq m / 380 sq ft (Excluding Open Space Garage)

Total = 275.7 sq m / 2,968 sq ft Including Limited Use Area (18.5 sq m / 199 sq ft)

This plan is for layout guidance only. Not drawn to scale unless stated. Windows and door openings are approximate. Whilst every care is taken in the preparation of this plan, please check all dimensions, shapes and compass bearings before making any decisions reliant upon them.

We would be delighted
to tell you more.

Evey Hadley
01789 206964
evey.hadley@knightfrank.com

Knight Frank Stratford-upon-Avon
Bridgeway House, Bridgeway
Stratford-upon-Avon, CV37 6YX

knightfrank.co.uk

Your partners in property

1. Particulars: These particulars are not an offer or contract, nor part of one. You should not rely on statements given by Knight Frank in the particulars, by word of mouth or in writing ("information") as being factually accurate about the property, its condition or its value. Neither Knight Frank nor any joint agent has any authority to make any representations about the property, and accordingly any information given is entirely without responsibility on the part of Knight Frank. 2. Material Information: Please note that the material information is provided to Knight Frank by third parties and is provided here as a guide only. While Knight Frank has taken steps to verify this information, we advise you to confirm the details of any such material information prior to any offer being submitted. If we are informed of changes to this information by the seller or another third party, we will use reasonable endeavours to update this as soon as practical. 3. Photos, Videos etc: The photographs, property videos and virtual viewings etc. show only certain parts of the property as they appeared at the time they were taken. Areas, measurements and distances given are approximate only. 4. Regulations etc: Any reference to alterations to, or use of, any part of the property does not mean that any necessary planning, building regulations or other consent has been obtained. A buyer must find out by inspection or in other ways that these matters have been properly dealt with and that all information is correct. 5. Fixtures and fittings: A list of the fitted carpets, curtains, light fittings and other items fixed to the property which are included in the sale (or may be available by separate negotiation) will be provided by the Seller's Solicitors. 6. VAT: The VAT position relating to the property may change without notice. 7. To find out how we process Personal Data, please refer to our Group Privacy Statement and other notices at <https://www.knightfrank.com/legals/privacy-statement>.

Particulars dated April 2025. Photographs and videos dated May 2023. All information is correct at the time of going to print. Knight Frank is the trading name of Knight Frank LLP. Knight Frank LLP is a limited liability partnership registered in England and Wales with registered number OC305934. Our registered office is at 55 Baker Street, London W1U 8AN. We use the term 'partner' to refer to a member of Knight Frank LLP, or an employee or consultant. A list of members names of Knight Frank LLP may be inspected at our registered office. If you do not want us to contact you further about our services then please contact us by either calling 020 3544 0692, email to marketing.help@knightfrank.com or post to our UK Residential Marketing Manager at our registered office (above) providing your name and address.

Date: 02 May 2025
Our reference: OXF012514528

Annaway, Sibford Road, Epwell, Banbury, OX15 6LH

We have pleasure in enclosing details of the above property for which we are quoting a guide price of .

Please let us know if you need any further information about the property or surrounding area and we will be delighted to provide it.

Full details of all our properties and a wide range of services can be viewed online at knightfrank.co.uk. You can also receive early information on new properties coming on to the market by signing up to [My Knight Frank](#).

For additional information or to make arrangements to view the property, please get in touch.

We'd love to help you.

Yours faithfully



KNIGHT FRANK LLP

Enc:

Evey Hadley
Negotiator
+44 1789 206964
evey.hadley@knightfrank.com

James Way
Partner, Head of Midlands Sales
+44 1789 206 950
james.way@knightfrank.com

Knight Frank, Oxford
Bridgeway House, Bridgeway, Stratford upon Avon, CV37 6YX
+44 1865 790077

knightfrank.co.uk

Your partners in property

Knight Frank LLP is a limited liability partnership registered in England and Wales with registered number OC305934. Our registered office is at 55 Baker Street, London W1U 8AN. We use the term 'partner' to refer to a member of Knight Frank LLP, or an employee or consultant. A list of members' names of Knight Frank LLP may be inspected at our registered office.

Regulated by RICS

V4.3 Sep 24