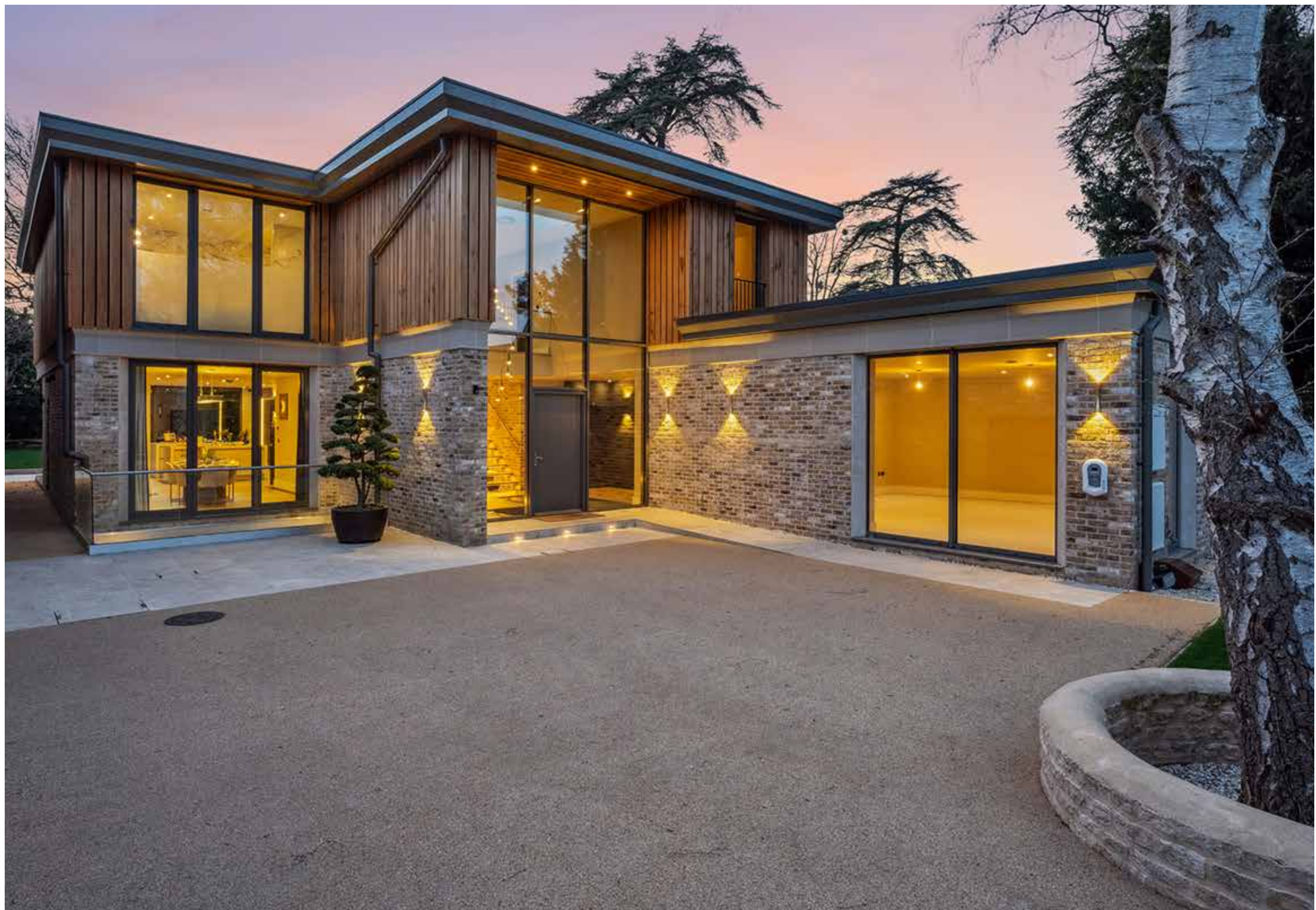




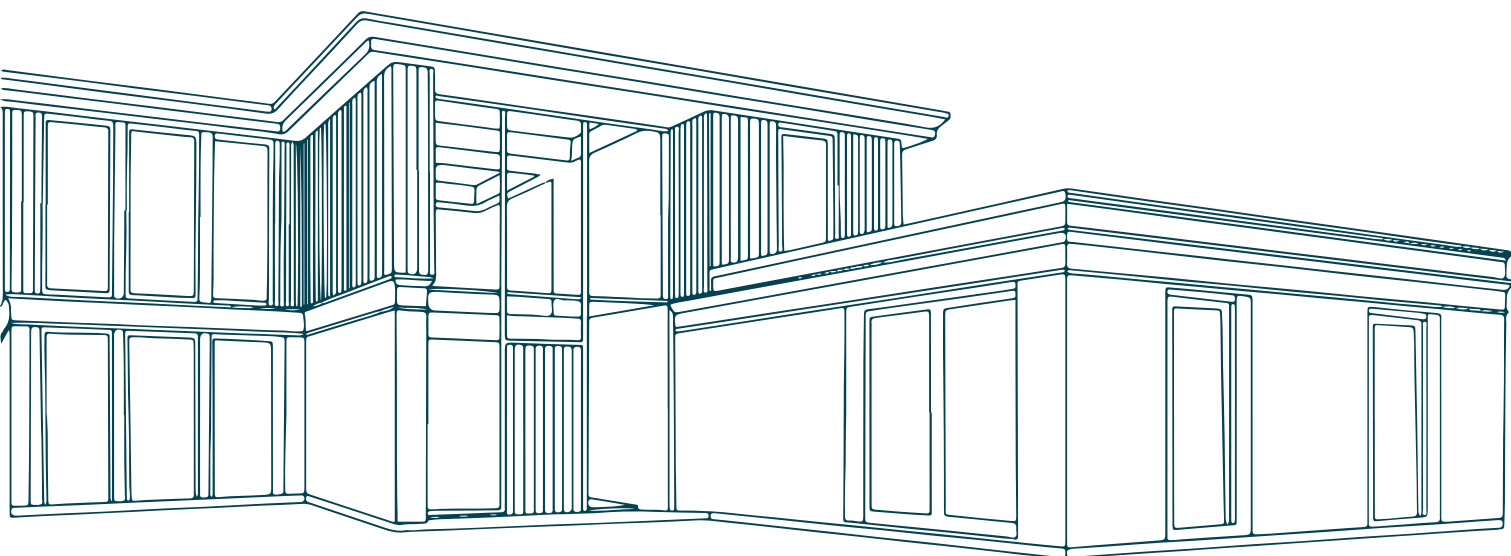
See inner-city elegance in a new light

**BELBROUGHTON HOUSE**









# Modern elegance. Redefined

Beyond discreet automated gates, a private driveway leads you into a serene sanctuary of space and light. Inside, expansive rooms and lofty ceilings are framed by a modern layout and thoughtful design, allowing natural light to pour in from every angle. This home redefines inner-city living - pause at the striking atrium to truly appreciate its architectural brilliance.

This home is perfectly proportioned for modern family living and offers five generous bedrooms across three floors, each with access to a luxurious en-suite.

Thoughtfully designed spaces throughout - from the kitchen and drawing room to the games room, gym, and home cinema - provide ample room to work, relax, and entertain.

A contemporary family home of rare quality - designed for space, light, and modern living. With five luxurious bedrooms, exceptional entertaining spaces, and a breathtaking central atrium, it offers the perfect balance of privacy, comfort, and beauty which is sure to redefine your expectation of modern elegance.







# Right in the heart of Oxford

Belbroughton House lies within the North Oxford Conservation area (just to the east of Banbury Road) in Oxford's finest residential suburb.

Set on a wide, tree-lined road among grand detached homes, this sought-after area offers exceptional proximity to renowned schools and colleges - all within walking distance. Enjoy effortless access to the vibrant amenities of central Oxford and Summertown, or take tranquil strolls to the University Parks and Port Meadow - perfect for dog walks and outdoor pursuits.

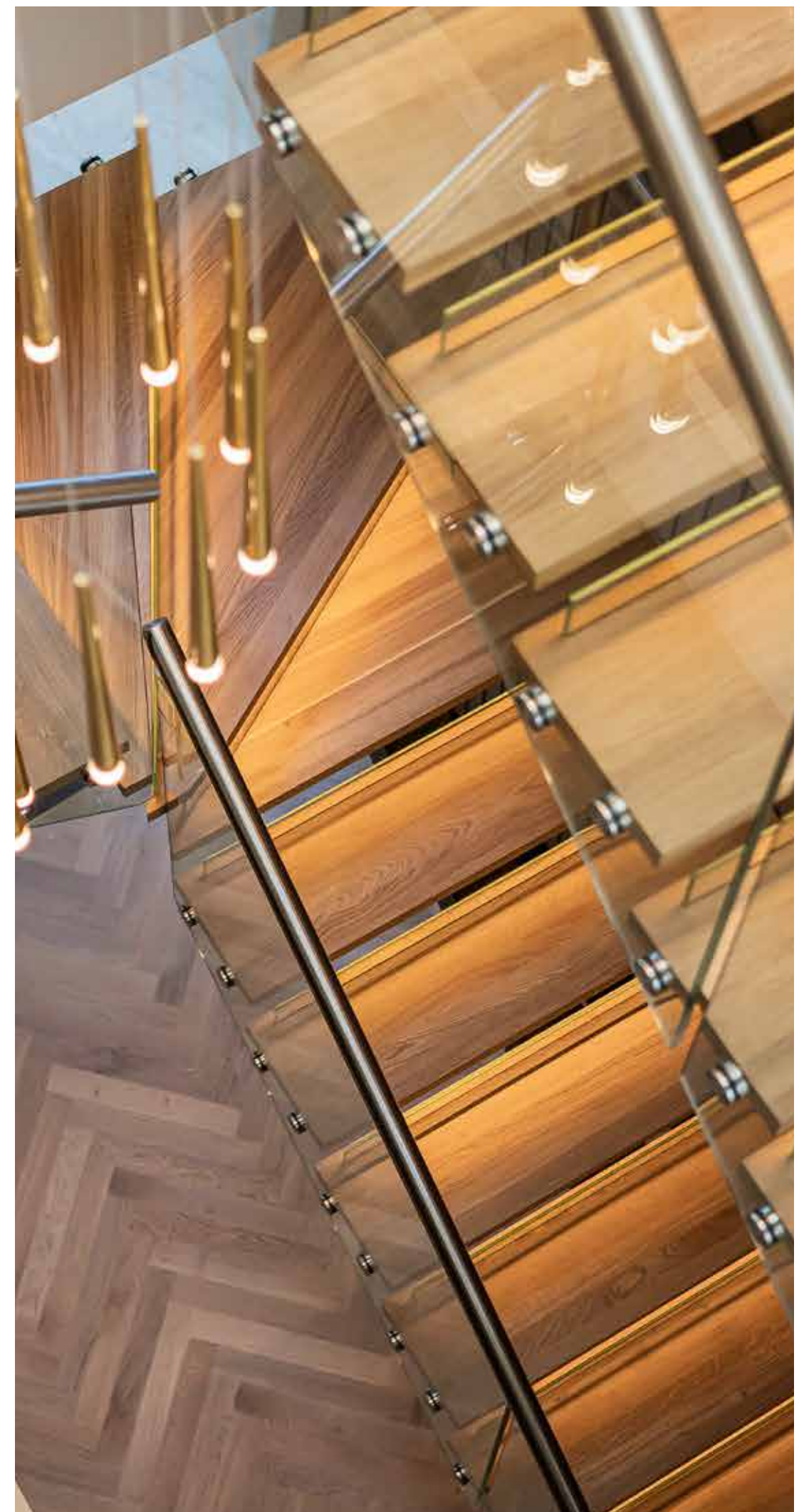
Oxford offers a rich blend of culture, education, and retail. For travel beyond the city, the nearby Banbury Road provides excellent public transport links and direct access to the A40 and M40 towards London.

Both Oxford train stations (Parkway and Centre) are easily accessible, offering regular direct services to London Paddington (approx. 53 mins) and London Marylebone (approx. 62 mins).





















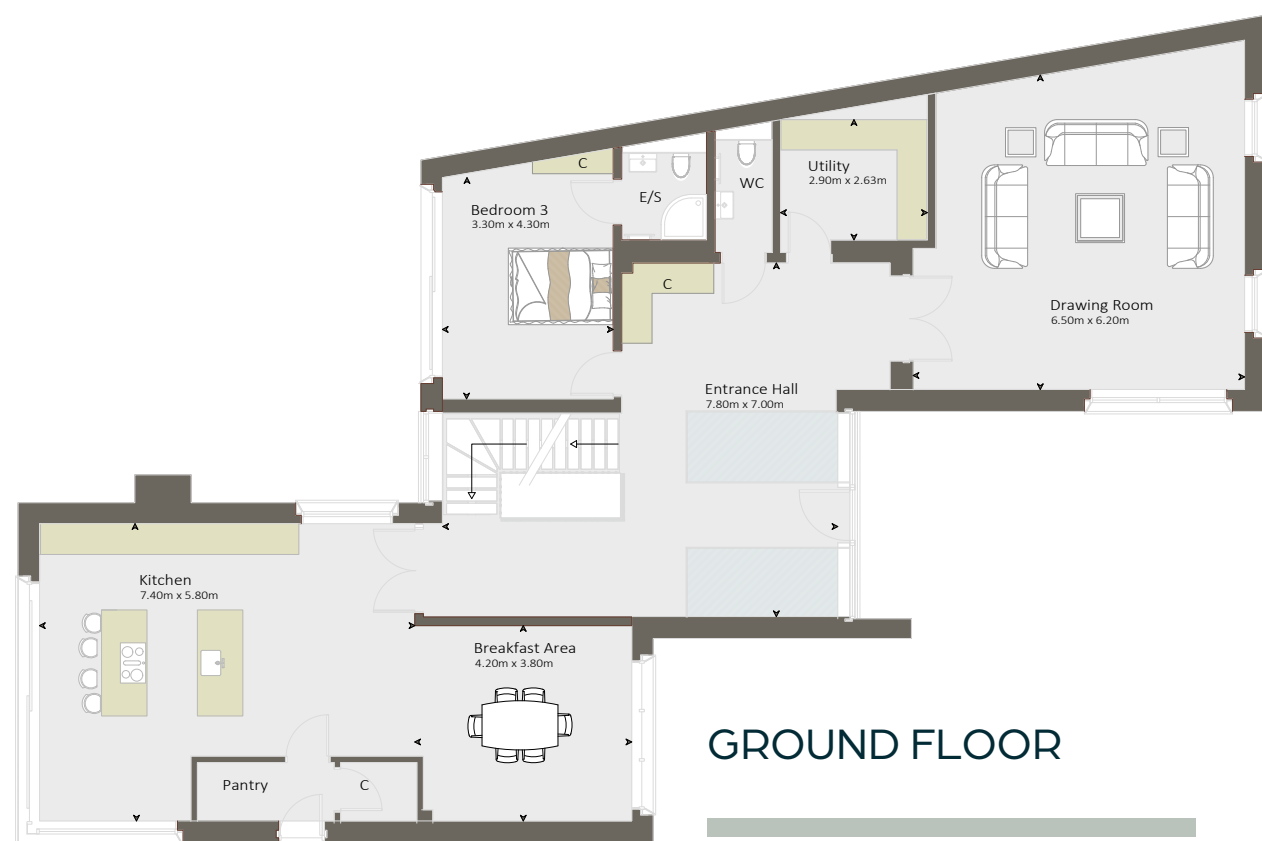
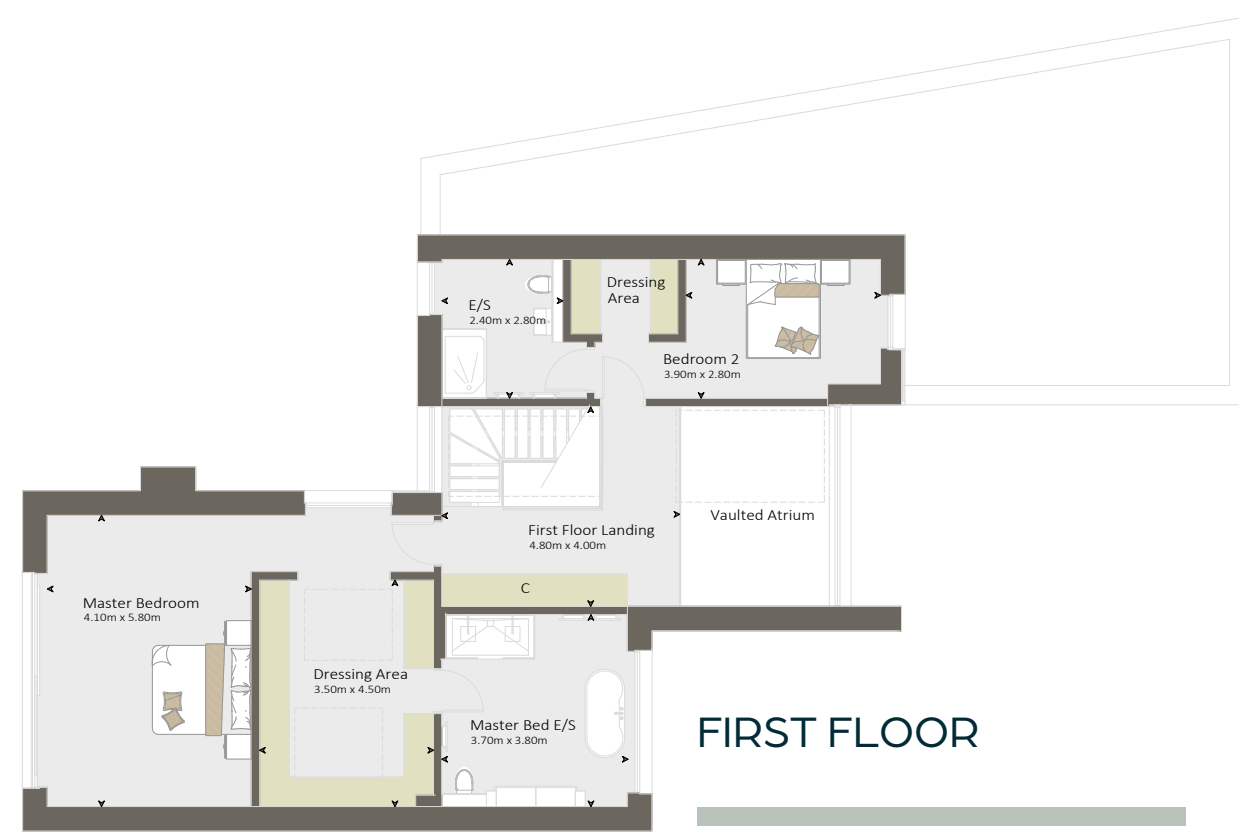
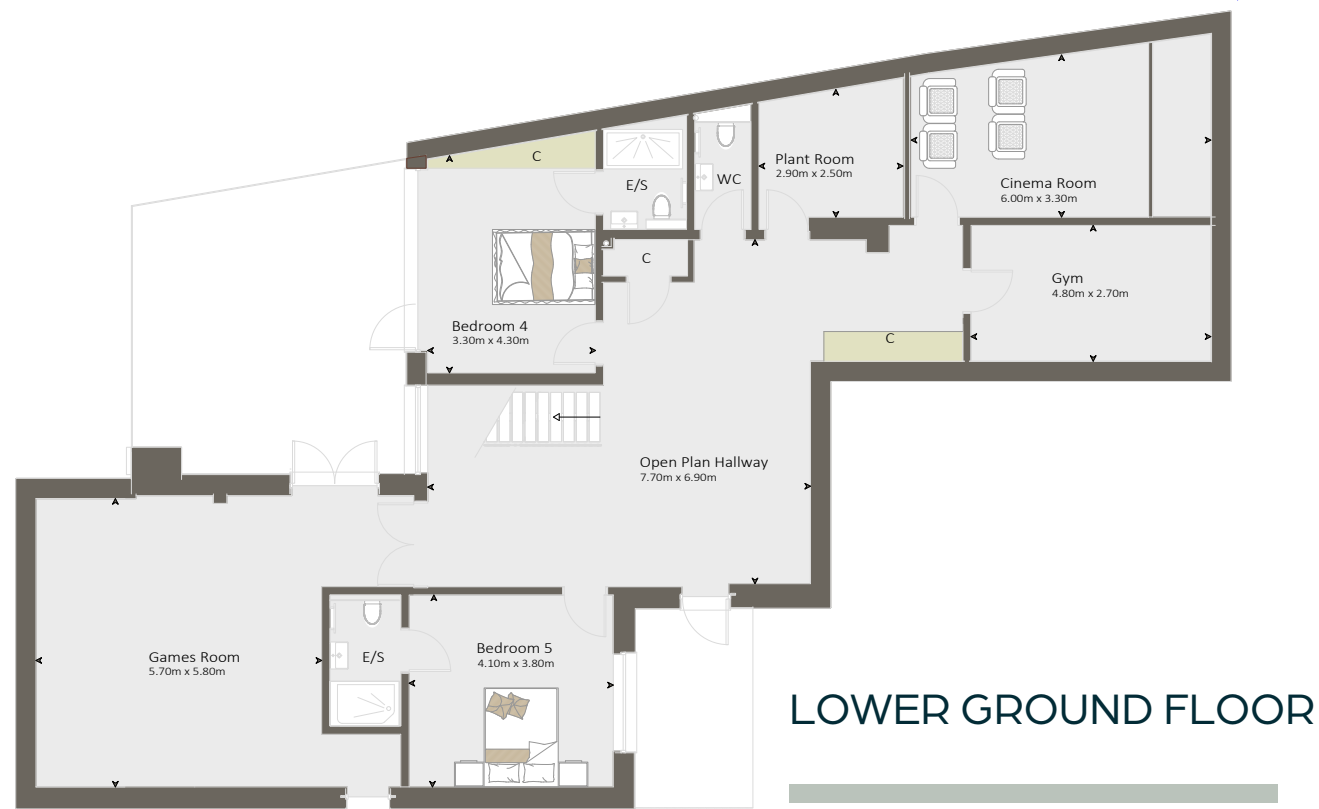












LOWER GROUND FLOOR  
185 sq m

GROUND FLOOR  
189 sq m

FIRST FLOOR  
(Excluding Atrium)  
110 sq m

TOTAL 484 sq m

