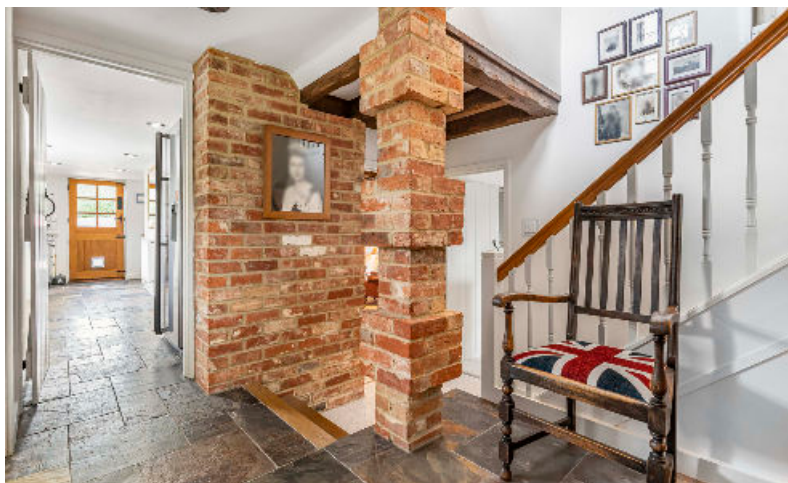




Horton-cum-Studley, Oxford





The Old Village Hall

A charming thatched period property, surrounded by delightful gardens and with 800sqft of outbuildings.



Tenure: Available freehold

Local authority: Cherwell District Council

Council tax band: F





The Property

Dating back to what is believed to be the 17th century, with modern additions, The Old Village Hall has abundant character and charm, which stands out from the moment you enter through the gate. The original part of this home houses many original features, including exposed beams, brickwork, and an open fireplace. This well-presented home has been extended and significantly modernised to offer spacious living and adding contrast between new and old, creating a light and airy space.

The delightful gardens are incredibly private and are a significant feature of the property, with far-reaching views towards Otmoor and the popular Studley Wood Golf course. There are extensive outbuildings, including a triple garage, workshop, and store. The 800 sqft of garaging and workshops has been thoughtfully created so that it is not visible from the road. It has a separate power supply to the cottage, making it ideal for car storage or similar.





Location

Horton-cum-Studley is a thriving village 5 miles outside of Oxford, with a flourishing community. Amenities include the Studley Wood Golf Club and the Millennium Village Hall, with playing fields and tennis courts. Village landmarks include St Barnabas Church, designed by William Butterfield, who was responsible for Keeble College, and Studley Priory, a large 16th-century house built on the site of an earlier Benedictine priory. In the neighbouring village of Beckley, you can find the award-winning community-owned Abingdon Arms pub and in Murcott, the Michelin-starred Nut Tree pub and restaurant.

The village is located to the east of Oxford and is well positioned for commuting to London by the M40 (junction 8 is approximately 8 miles) or via regular rail links to London Marylebone and London Paddington from Haddenham and Thame Parkway, Oxford Parkway, or Bicester. The village is well located for schooling, including The Dragon School. Oxford Bus Company, bus 108 runs from Oxford City Centre to Horton cum Studley.



