



Chadlington, Chipping Norton



Barley Hill House

A beautifully presented period house, in an elevated position, with glorious views on the edge of a thriving village.



Guide price: £1,975,000

Tenure: Available freehold

Local authority: West Oxfordshire

Council tax band: G





The property

Barley Hill House is approached via a private road with only three other properties. The house sits in an elevated position behind electric gates looking down over the sweeping lawns. It has parking for a number of vehicles plus a double garage. On entering the property there is a wonderful reception hall with herringbone parquet floors and a welcoming wood burner. There are two generous reception rooms, one with an open fireplace and the second, currently used as a games room, has a vaulted ceiling. Off the main hall is a large kitchen with integrated appliances that opens to the dining room. This is a wonderful triple aspect room facing south over the gardens and giving access to the substantial entertaining terrace. Off the main hall is also a utility room, shower and WC.

Returning to the main hall, the staircase leads to the first floor. There are two double bedrooms, one with a combined bath/shower bathroom. At either end of the first floor are two separate staircases leading up to two further bedrooms with vaulted ceilings. One has a bath at one end, which sits luxuriously on a raised plinth. In the centre of that floor is a bathroom with a "jack and jill" arrangement.

Returning to the drive, there is an additional building which was historically used as a pottery area. However, it could be upgraded to be a home office or party barn. If you wander one of the paths from the drive, you will find a secluded wood-fired Swedish jacuzzi and barbeque area. Again, this is elevated with views across the gardens. There are changing and toilet facilities available alongside. A genuinely private home with far-reaching views across the gardens, which will change with the seasons.





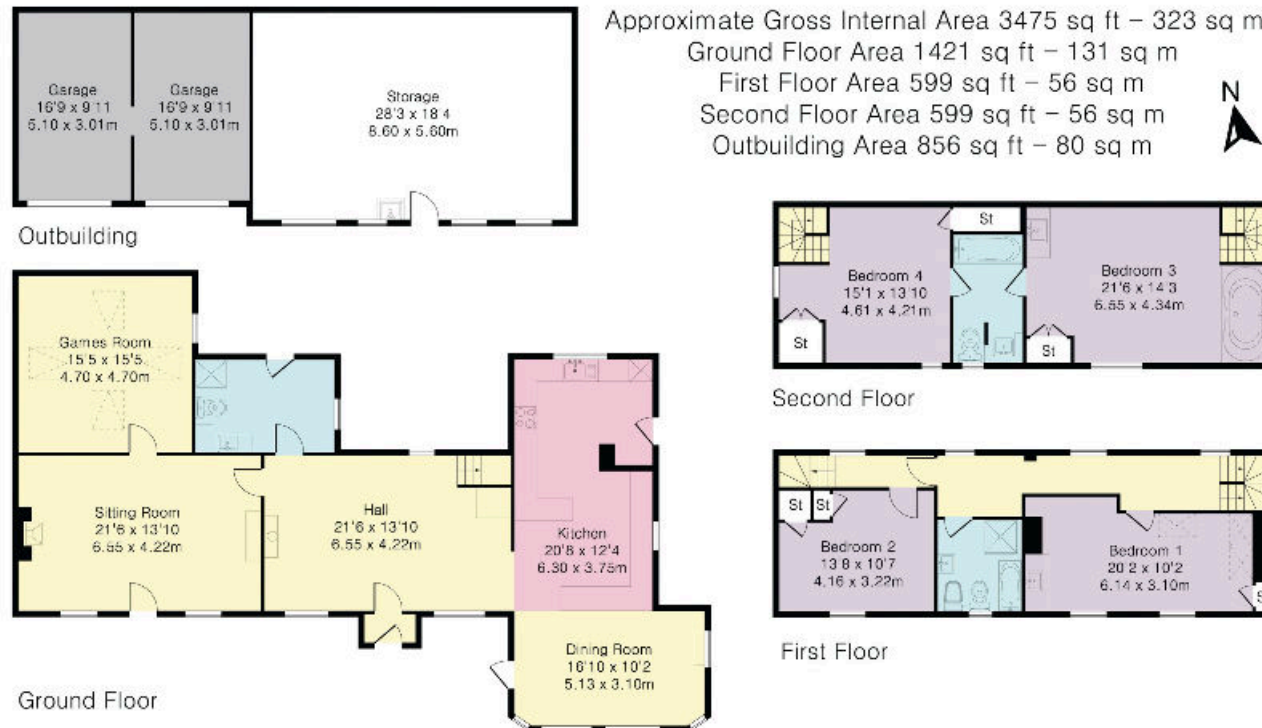


Chadlington is easily accessed by direct railway from Paddington to Charlbury station from 1 hour 10 mins. Hugely popular not least as the setting for the popular TV series, Clarkson's Farm. The area is also well known for the finest gastro pubs such as The Chequers, The Wild Rabbit and The Kingham Plough with Soho Farmhouse and Daylesford being closeby. There are abundant schools ranging from excellent primary schools too preparatory schools including Summerfields and the Dragon.



This plan is for guidance only and must not be relied upon as a statement of fact.

Attention is drawn to the Important Notice on the last page of the text of the particulars.



Knight Frank
Oxford Sales
274 Banbury Road
Oxford
OX2 7DY
[knightfrank.co.uk](https://www.knightfrank.co.uk)

I would be delighted to tell you more
Harry Sheppard
+44 1865 264 879
harry.sheppard@knightfrank.com



Fixtures and fittings: A list of the fitted carpets, curtains, light fittings and other items fixed to the property which are included in the sale (or may be available by separate negotiation) will be provided by the Seller's Solicitors.
Important Notice: 1. Particulars: These particulars are not an offer or contract, nor part of one. You should not rely on statements by Knight Frank LLP in the particulars or by word of mouth or in writing ("information") as being factually accurate about the property, its condition or its value. Neither Knight Frank LLP nor any joint agent has any authority to make any representations about the property, and accordingly any information given is entirely without responsibility on the part of the agents, seller(s) or lessor(s). 2. Photos, Videos etc: The photographs, property videos and virtual viewings etc. show only certain parts of the property as they appeared at the time they were taken. Areas, measurements and distances given are approximate only. 3. Regulations etc: Any reference to alterations to, or use of, any part of the property does not mean that any necessary planning, building regulations or other consent has been obtained. A buyer or lessee must find out by inspection or in other ways that these matters have been properly dealt with and that all information is correct. 4. VAT: The VAT position relating to the property may change without notice. 5. To find out how we process Personal Data, please refer to our Group Privacy Statement and other notices at <https://www.knightfrank.com/legals/privacy-statement>.
Particulars dated September 2023. Photographs and videos dated September 2023.

Knight Frank is the trading name of Knight Frank LLP. Knight Frank LLP is a limited liability partnership registered in England and Wales with registered number OC305934. Our registered office is at 55 Baker Street, London W1U 8AN where you may look at a list of members' names. If we use the term 'partner' when referring to one of our representatives, that person will either be a member, employee, worker or consultant of Knight Frank LLP and not a partner in a partnership. If you do not want us to contact you further about our services then please contact us by either calling 020 3544 0692, email to marketing.help@knightfrank.com or post to our UK Residential Marketing Manager at our registered office (above) providing your name and address.