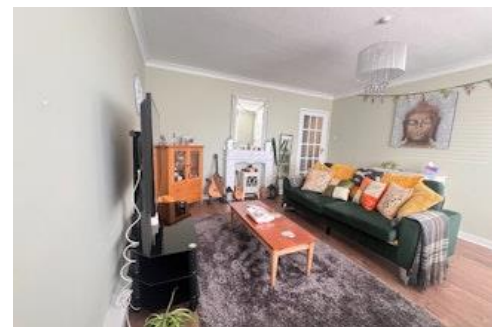
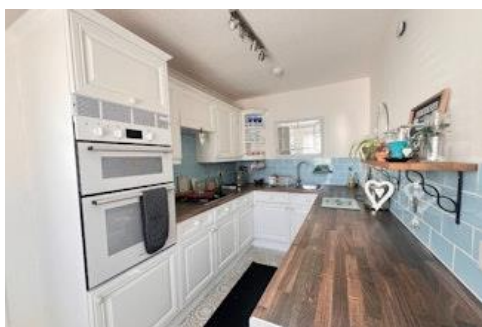




Rutland Road, Ansdell, Lytham St Annes

£140,000



2



1



1

EPC rating: D

- Ground Floor Apartment
- 2 Bedrooms
- Modern Kitchen

- Laminate Living Room Floor
- Garage
- Family Bathroom



Email
Sales@jgl.co.uk

Phone
01253 795900

Description

Situated in a popular block just a short walk form the centre of Ansdell, a 2 bedroom ground floor apartment. Communal entrance, hallway, lounge, kitchen, double bedroom, guest bedroom, family bathroom, garage.

Floorplan

To Follow

Rooms

Situation

Situated just off Rutland Road, Ansdell, a 2 bedroom ground floor apartment.

Communal Entrance

Accessed from the front of the building with a secure entry phone system. The apartment front door is immediately on the left.

Kitchen

Modern fitted kitchen with wall and units, integrated appliances including, fridge freezer, washing machine, electric oven and gas hob. Double glazed window overlooking the front of the property.
2.15m x 3.83m (7'1" x 12'7")

Living Room

A good size lounge, laminate wooden floor with double glazed window overlooking the front of the property. Wall mounted radiator, ceiling light plug and aerial sockets.
4.12m x 4.93m (13'6" x 16'2")

Bedroom 1

A good size double bedroom, carpeted with double glazed window overlooking the rear of the property. Fitted wardrobe, wall mounted radiator, ceiling light and plug sockets.
3.33m x 3.91m (10'11" x 12'10")

Bedroom 2

A good size double bedroom, carpeted with double glazed window overlooking the rear of the property. Fitted wardrobe, wall mounted radiator, ceiling light and plug sockets.
3.6m x 3.33m (11'10" x 10'11")

Bathroom

Accessed off the hallway with vinyl floor and walls, bath tub with glass shower screen and electric shower over, w.c, hand basin with mirror above, heated towel radiator.
2.08m x 2.15m (6'10" x 7'1")

Garage

Single Garage

EPC Band

Band D

Council Tax Band

Band B

Tenure

Leasehold

Photographs



Map



Notes

This image shows a single sheet of white paper with horizontal ruling lines. The lines are evenly spaced and run across the width of the page. There are no margins, text, or other markings on the paper.