



5 Oakhurst, Grayshott, GU26 6JW

Guide Price £885,000 - Tenure: Freehold

5 Oakhurst

Grayshott, Hindhead

- Detached Four Bedroom Family Home
- Short Stroll Of Grayshott Village & Amenities
- Refitted Kitchen/ Breakfast Room
- Rear Aspect Living Room, Dining Room & Separate Study
- Downstairs Cloakroom
- Principal Bedroom With En-Suite Bathroom
- Guest Bedroom With Refitted En-Suite
- Refitted Family Bathroom
- Garage & Driveway
- Enclosed Level Rear Garden

This well presented and spacious four bedroom detached house is situated within a small cul-de-sac development in Grayshott Village. The accommodation comprises a well proportioned living room, with doors onto the garden, rear aspect dining room, study with quality storage and shelving, fabulous refitted (2023) kitchen/breakfast room and downstairs WC.

Upstairs, from a spacious landing there are four double bedrooms - all with ample fitted wardrobes, two of which have en-suites, and a stylish family bathroom (The guest en-suite and main bathroom were refitted in 2023).

Outside, the rear garden is private and enclosed, mainly laid to lawn and with a patio seating area with electric awning over from the living room doors. There is off street parking to the front of the property as well as a single garage.



5 Oakhurst

Services

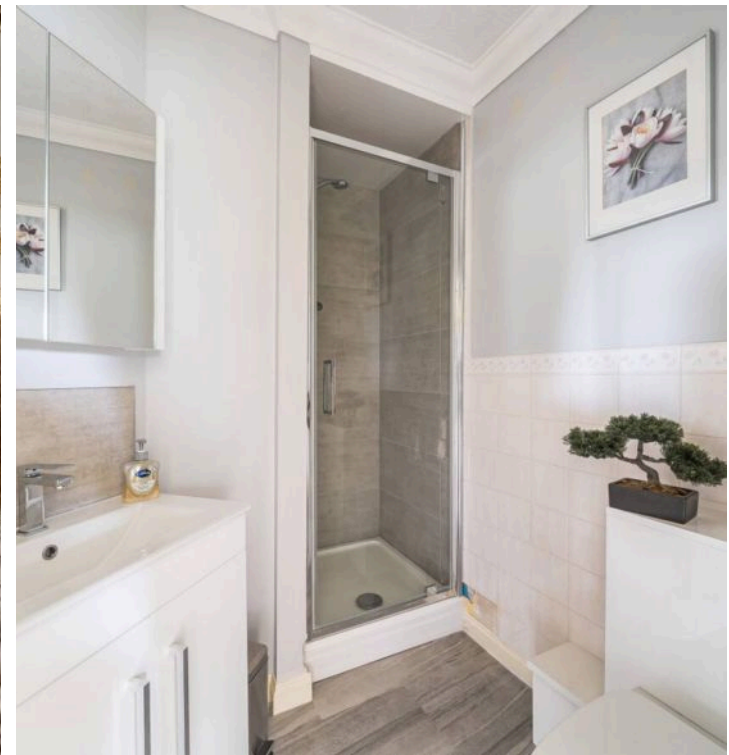
Mains: Gas, Electric, water, and drainage (As advised by our vendor)

Broadband and Mobile services: Visit checker.ofcom.org.uk

East Hampshire Council Tax Band: F (£3207.77)

EPC RATING: D

Instagram: Follow us @haslemerepropertyclub



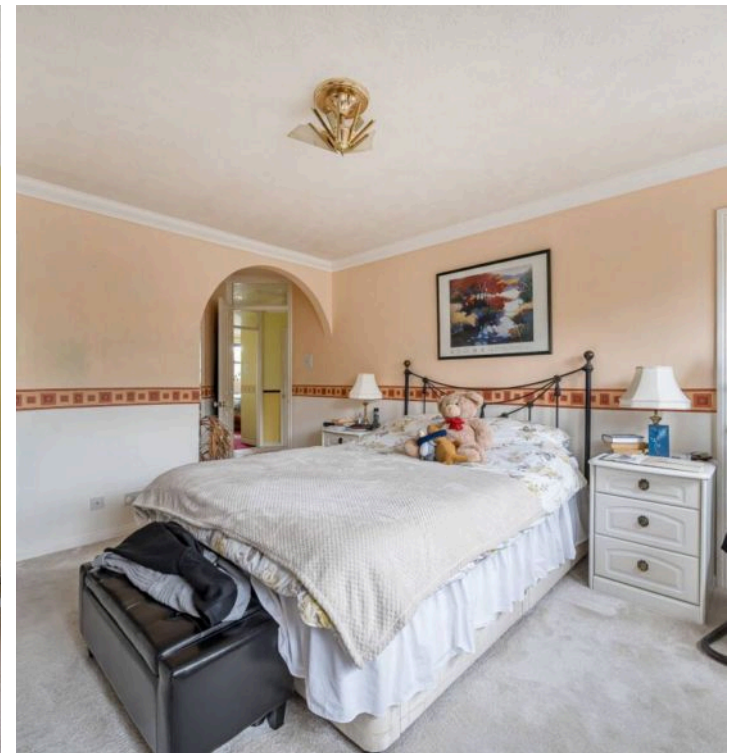
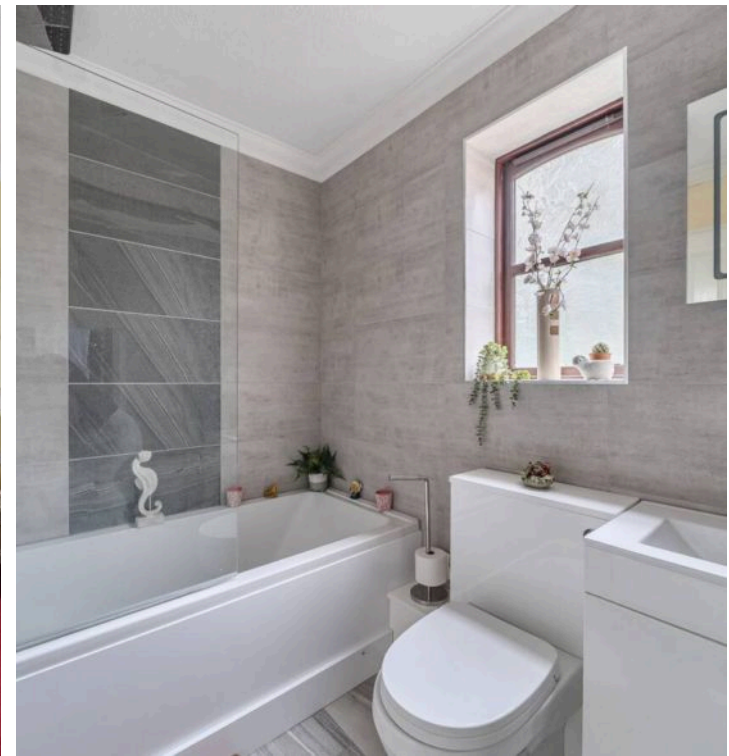
5 Oakhurst

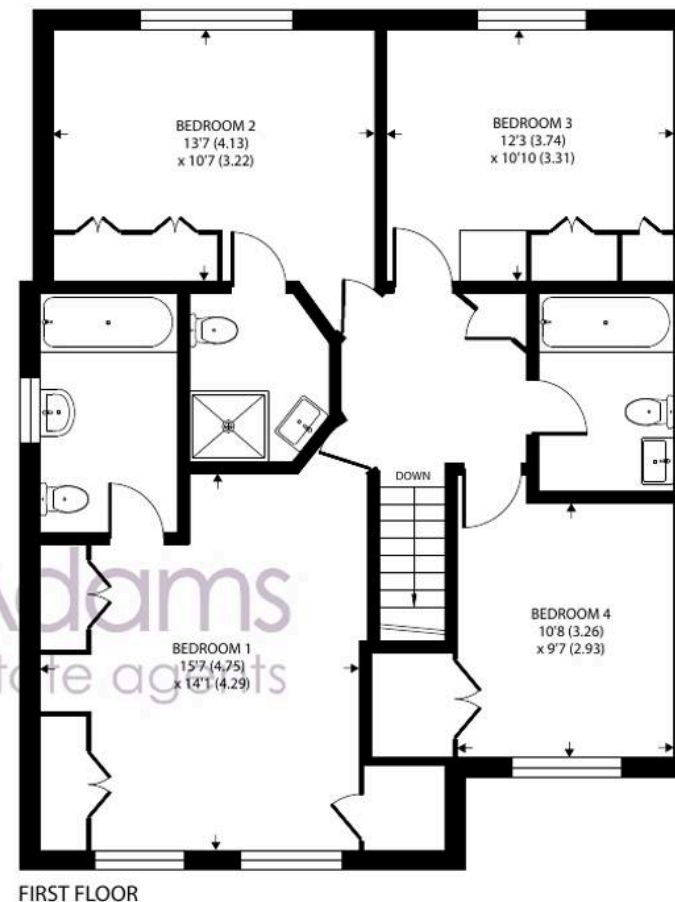
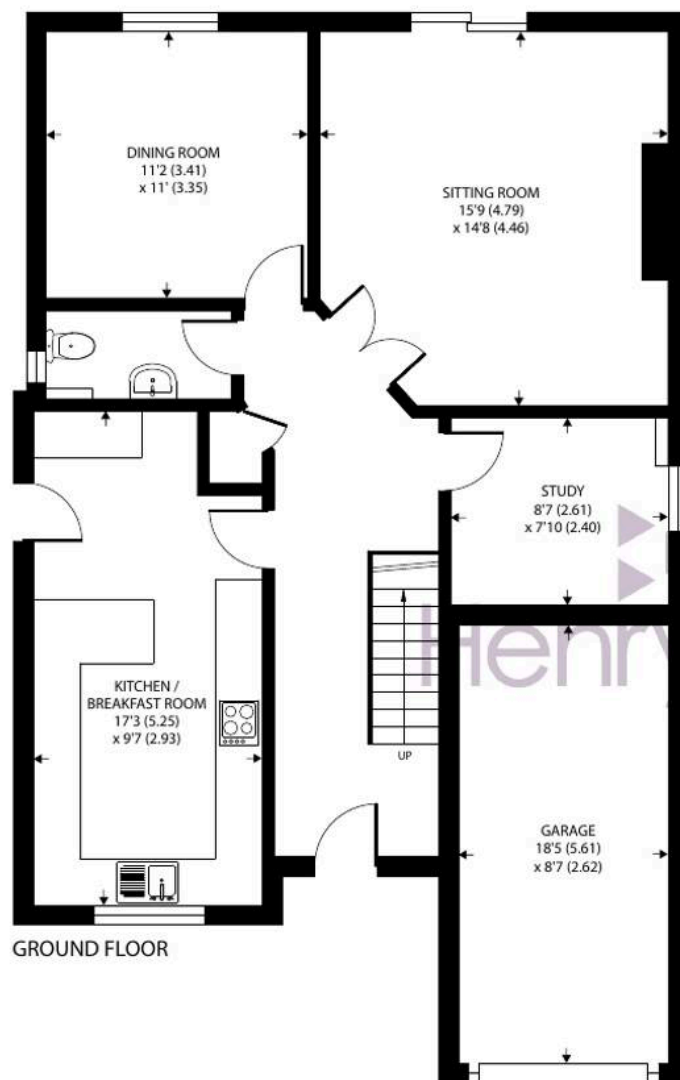
Location

This sought-after village, on the Hampshire/Surrey border, is around four miles from Haslemere. The nearby A3 provides easy road links to London and the South Coast, while Haslemere and Farnham railway stations offer direct services to London Waterloo. Grayshott itself is a vibrant village with a range of independent shops, a GP surgery, Grayshott CE Primary School, a village hall, and a traditional pub, the Fox and Pelican. The area is ideal for outdoor enthusiasts, with scenic countryside walks at the Devil's Punch Bowl, all part of the East Hampshire Area of Outstanding Natural Beauty.

Directions:

SATNAV: GU26 6JW What3Words:///breached.secure.curls





Grayshott, Hindhead, GU26

Approximate Area = 1708 sq ft / 158.6 sq m

Garage = 162 sq ft / 15 sq m

Total = 1870 sq ft / 173.6 sq m

For identification only - Not to scale



Floor plan produced in accordance with RICS Property Measurement 2nd Edition,
Incorporating International Property Measurement Standards (IPMS2 Residential). © nichecom 2025.
Produced for Henry Adams. REF: 1360112



Henry Adams - Haslemere

Henry Adams LLP, Georgian Court, High Street, Haslemere - GU27 2LA

01428 644002

haslemere@henryadams.co.uk

www.henryadams.co.uk/

Agents Note - Our particulars are for guidance only and are intended to give a fair overall summary of the property. They do not form part of any contract or offer, and should not be relied upon as a statement or representation of fact. Measurements, areas and distances are approximate only. Photographs may include lifestyle shots and pictures of local views. No undertaking is given as to the structural condition of the property, or any necessary consents or the operating ability or efficiency of any service, system or appliance. Please ask if you would like further information, especially before you travel to the property.