



10 WINDRUSH

BURFORD, OXFORDSHIRE

A charming semi-detached Grade II Listed two-bedroom period stone cottage, situated on a quiet no through lane in the desirable village of Windrush backing onto orchard land to the rear

Ground Floor: Sitting Room • Kitchen/breakfast Room
Utility/Cloakroom

First Floor: Generous Double Bedroom
Guest Bedroom • Family Bathroom

Outside: Garden to front • Adjoining outbuilding

Butler 
Sherborn

Burford Office

2 Lower High Street, Burford, Oxfordshire, OX18 4RR

T 01993 822325

E bur@butlersherborn.co.uk

www.butlersherborn.co.uk

The London Office

40 St James's Place, London, SW1A 1NS

T 0207 839 0888

E enquiries@tlo.co.uk

www.tlo.co.uk



DESCRIPTION

Dating back to the 1800's, 10 Windrush is a stunning example of a charming Cotswold cottage in the heart of the desirable village of Windrush. The property has been lovingly refurbished by the current owners to a high standard with a pretty front garden and backing on to orchard land at the rear.

SERVICES

Mains water and electricity. Electric central heating with underfloor heating in the kitchen, cloakroom and upstairs bathroom. Private drainage. Gigaclear broadband. No tests to the suitability of services have been carried out and intending purchasers should commission their own tests (if required).

FIXTURES & FITTINGS

Only those items mentioned in these particulars are included in the sale. Some additional items may be available by separate negotiation.

WAYLEAVES, EASEMENTS & RIGHTS OF WAY

The property is being sold subject to and with the benefit of all rights including; rights of way, whether public or private, light, support, drainage, water and electricity supplies and other rights and obligations, easements and quasi-easements and restrictive covenants and all existing and proposed wayleaves for masts, pylons, stays, cables, drains, water and gas and other pipes whether referred to in these particulars or not.

TENURE

Freehold



LOCAL AUTHORITY

Cotswold District Council, Trinity Road, Cirencester
GL7 1PX | T: 01285 623000 | W: cotswold.gov.uk

COUNCIL TAX: Band D

VIEWINGS

Please telephone Butler Sherborn, Burford Office
T 01993 822325 or The London Office T 0207 839 0888.
E bur@butlersherborn.co.uk

DIRECTIONS (OX18 4TU)

From Burford take the A40 towards Cheltenham. Pass 'The Inn for All Seasons' on the right and after about a mile turn right to Windrush. On entering the village bear left at the first green and continue until you reach a green on your right, with a phone-box. Walk down the lane to the right of the green and 10 Windrush can be found on the left hand side.

what3words: ///slide.prospered.mermaids

Pubs
The Fox, Great Barrington – 1 mile
The Bull, Burford – 4.3 miles

Schools
Burford Primary and Secondary Schools – 4.5 miles
Hatherop Castle School – 7.8 miles

Train station
Charlbury – 12 miles
Oxford – 23.5 miles

Members Clubs
Estelle Manor – 17.6 miles
Soho Farmhouse – 20.5 miles
Daylesford Farmhouse 13.8miles



www.butlersherborn.co.uk

10 Windrush, Burford, OX18 4TU

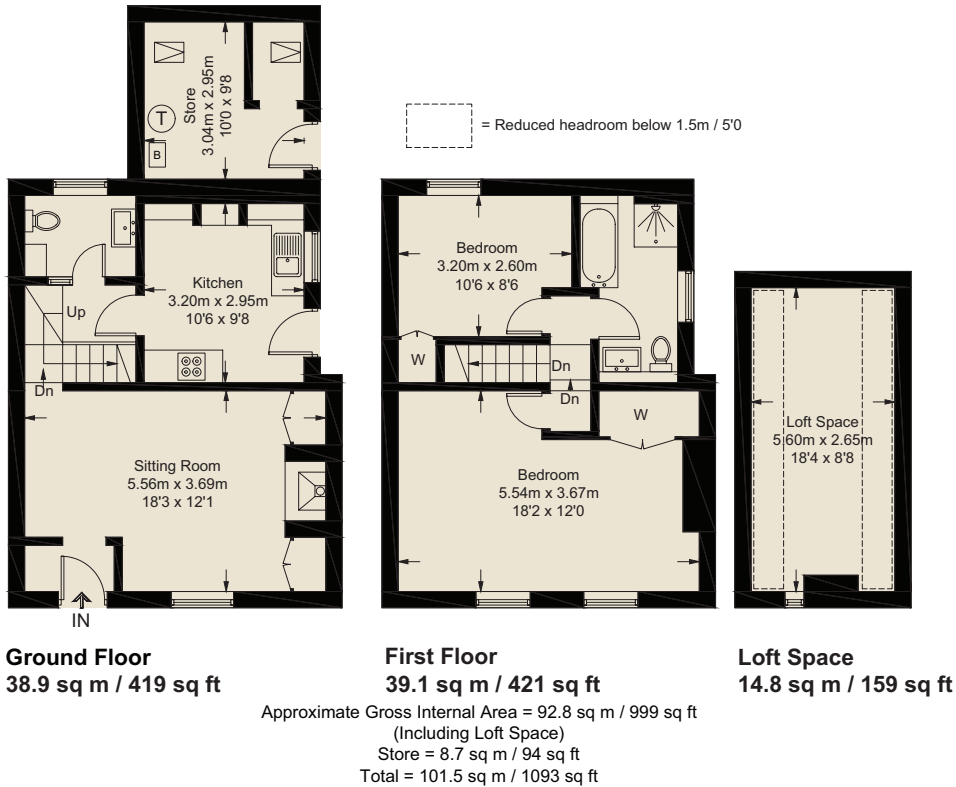


Illustration for identification purposes only, measurements are approximate, not to scale. (ID1184899)

Disclaimer 1. These particulars, including any plan, are a general guide only and do not form any part of any offer or contract. All descriptions, including photographs, dimensions and other details are given in good faith but do not amount to a representation or warranty. They should not be relied upon as statements of fact and anyone interested must satisfy themselves as to their correctness by inspection or otherwise. 2. Neither Butler Sherborn LLP, nor the seller, accepts responsibility for any error that these particulars may contain however caused. Neither the partners, nor any employees of Butler Sherborn LLP have any authority to make any representation or warranty whatsoever in relation to this property. 3. Any plan is for layout guidance only and is not drawn to scale. All dimensions, shapes and compass bearings are approximate and you should not rely upon them without checking them first. 4. Please discuss with us any aspects which Regulations potential purchasers will be required to provide proof of identification documents no later than where a purchaser's offer is informally accepted by the seller. 6. Butler Sherborn LLP uses the title partner for a member who is an equity partner, fixed share partner or senior employee. Photographs taken: March 2025. Particulars written: April 2025. Brochure by wordperfectprint.com

