

HALIFAX STREET, SYDENHAM, SE26
FREEHOLD
£725,000



SPEC

Bedrooms : 2

Receptions : 1

Bathrooms : 1

FEATURES

Wonderful Period Home

Conservation Area

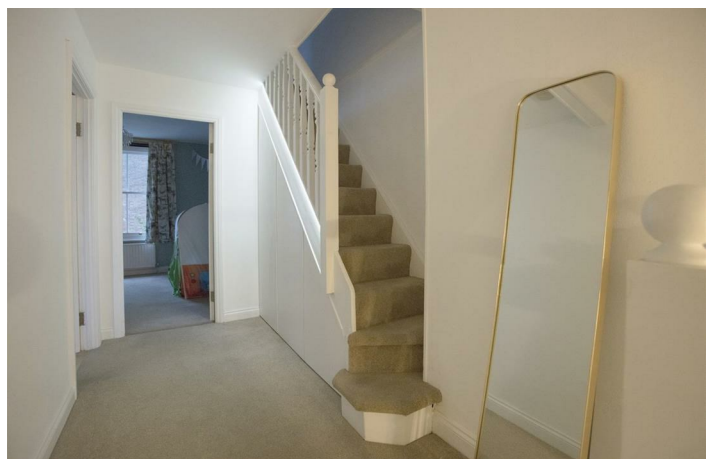
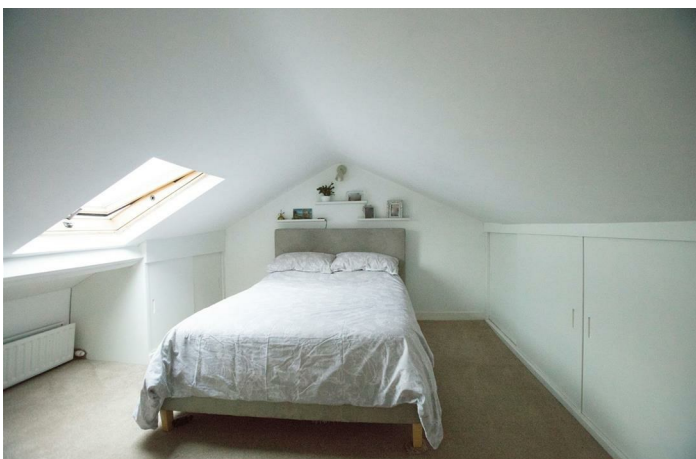
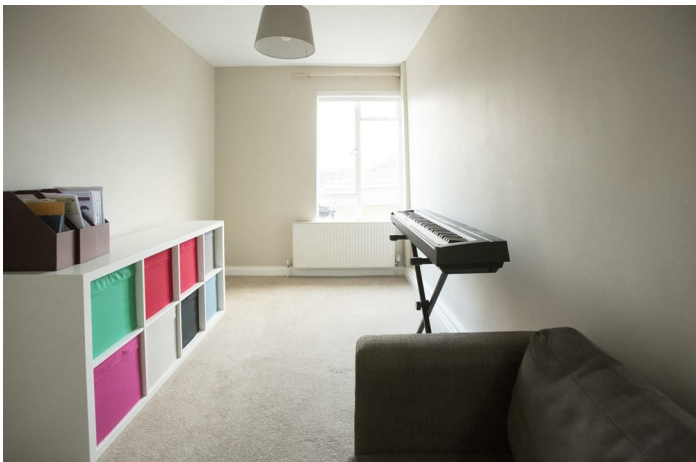
Prized Mature Location

Freehold



HALIFAX STREET SE26

FREEHOLD



HALIFAX STREET SE26

FREEHOLD



Quirky and Charming Two Bedder with Loft Room in Popular Conservation Area - CHAIN FREE.

This charming period two bedroom gem enjoys a secluded and residential setting within an easy stroll of both Forest Hill and Sydenham. You'll also enjoy pretty gardens to front and rear. Halifax is one of the oldest streets in Sydenham and has weathered its history proudly. Rows and rows of wonderful period properties welcome you and entice you to explore. Sydenham High Street and its many varied attractions are but a short stroll as is the much coveted Crystal Palace park.

This fine example displays a pretty front garden with idyllic picket fence. Enter directly into a long reception/living area which enjoys an aspect to both front and rear. Original wooden flooring defines the dining area where you'll find two steps leading down to the kitchen. Here you'll meet with modern tiling, cabinets and access to the garden. Heading upward to the first floor you find the master double bedroom peers down over the quietest part of Halifax Street. It has plenty of space for slumber and storage. A second double bedroom comes next along the landing with a pleasant dual aspect. The bright modern bathroom is accessed from the rear of the first landing next to handy deep recessed storage - perfect for brooms and brollies. A neat staircase hugs the left hand wall of the landing and delivers you to the bright loft room which is kept airy with a large overhead Velux.

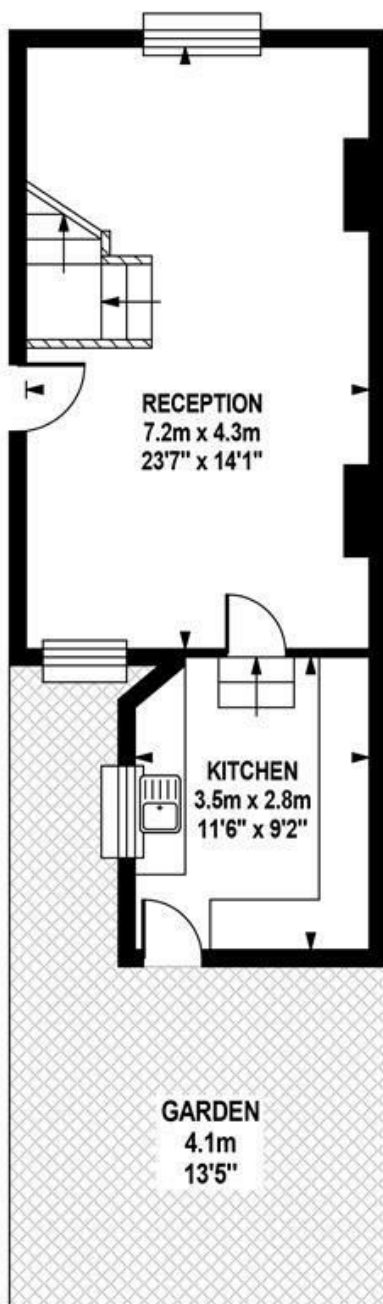
A 10 minute walk will have you at either Sydenham or Forest Hill stations, with fast and regular services to London Bridge and Victoria. Just down the road, Forest Hill has a library, swimming pool (and gym) and tonnes of cuisine options. The Greyhound in Sydenham does a cracking roast. Wells Park and Crystal Palace park are within easy reach for a walk or a picnic!

Tenure: Freehold

Council Tax Band: D

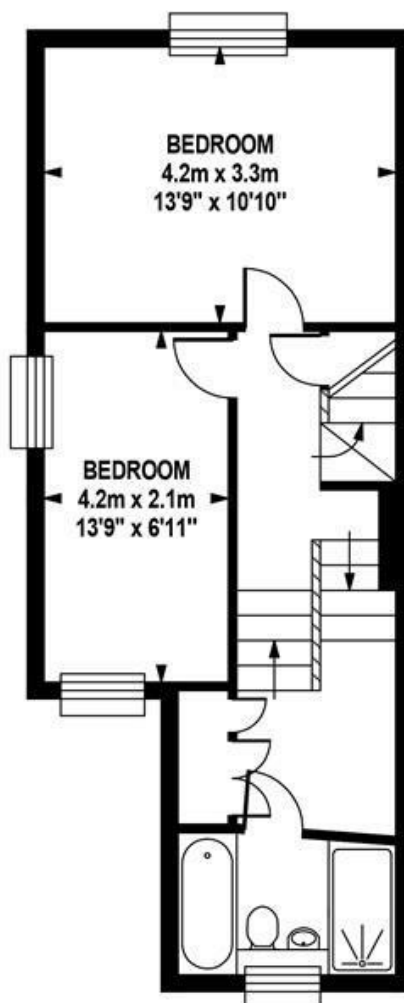
HALIFAX STREET SE26

FREEHOLD



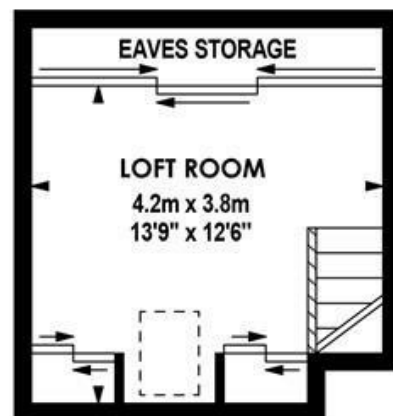
GROUND FLOOR

Approximate Internal Area :-
39.33 sq m / 423 sq ft



FIRST FLOOR

Approximate Internal Area :-
41.02 sq m / 442 sq ft



SECOND FLOOR

Approximate Internal Area :-
18.12 sq m / 195 sq ft

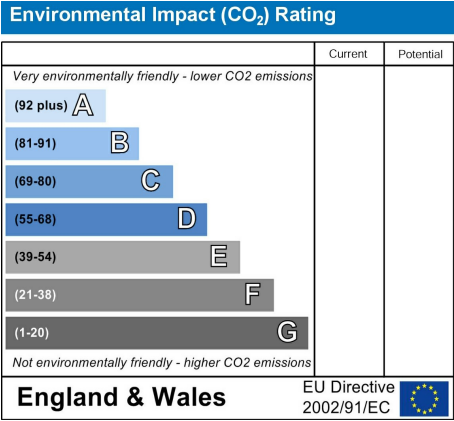
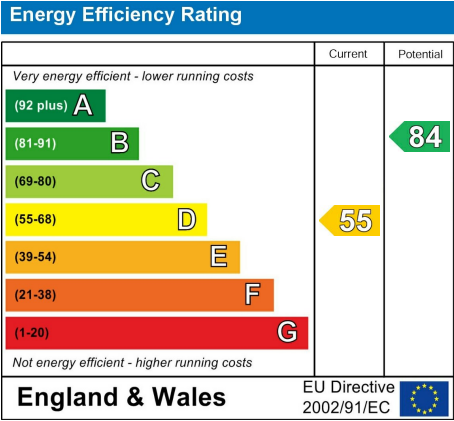
TOTAL APPROX.FLOOR AREA

Approximate Internal Area :- 98.47sq m / 1060 sq ft
Measurements for guidance only / not to scale

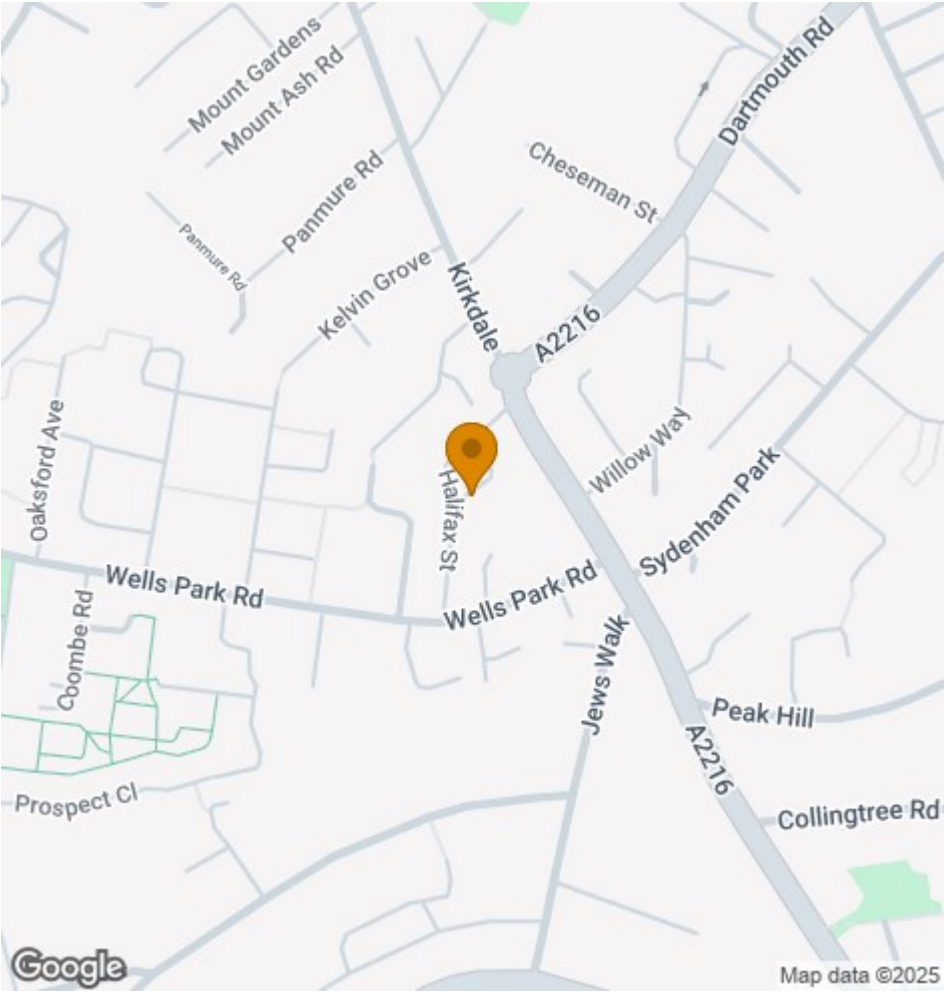


HALIFAX STREET SE26

FREEHOLD



All information supplied should be checked by your solicitor prior to exchange of contracts. Lease details, measurements, floorplans and photographs are displayed for guide purposes only. We have not carried out a structural survey and the services, appliances and specific settings have not been tested.



Wooster
&Stock

17 Nunhead Green
London SE15 3QQ
020 7952 0595
sales@woosterstock.co.uk