

# Jones & Redfearn

Wesley Haslam (1878) & Eastlands (1951)

Estate Agents, Valuers and Auctioneers  
Gwerthwyr Tai ac Arwerthwyr

3/5 Russell Road, Rhyl, LL18 3BS  
Telephone: 01745 351111 & 334467

Email: [info@jonesandredfearn.com](mailto:info@jonesandredfearn.com) Website: [www.jonesandredfearn.com](http://www.jonesandredfearn.com)  
The Property Ombudsman Registration Number - N00766-0

**REDUCED**

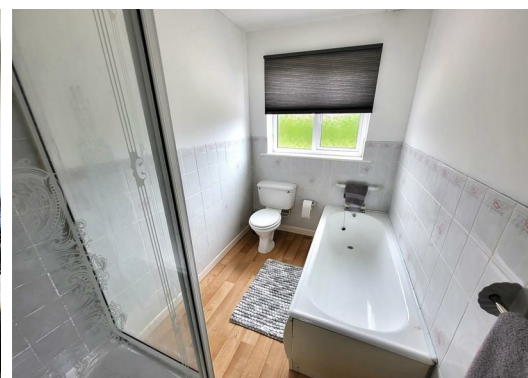


**13 Ffordd Ffynnon, Rhuddlan, Denbighshire LL18 2SP**

**£279,950**

NO ONWARD CHAIN - Located in a much sought after residential location in the historic village of Rhuddlan an opportunity to acquire an Extended Detached Bungalow in close proximity of the Schools, Doctors Surgery, Library and easy access of the A55 Expressway. Briefly affording: Entrance Hall, Lounge, Dining Room, Fitted Kitchen/Diner, Bathroom with four piece suite and three Bedrooms. Gas Central Heating & uPVC Double Glazing. Gardens to front and rear. Attached Garage.

Garden area to the front with driveway providing off road parking and access to the Garage. Enclosed South facing rear garden.





uPVC double glazed front door and matching window giving access to

**Entrance Hall**

Carpet, radiator and loft access.

**Lounge**

11'2 x 14'2 (3.40m x 4.32m)

Ornamental fire surround having coal effect living flame gas fire fitted. Radiator, carpet, power points, wiring for wall lights and white uPVC double glazed bay. window. Archway giving access to

**Dining Room**

10'10 x 6'8 (3.30m x 2.03m)

Carpet, radiator, power points and white uPVC double glazed window.

**Kitchen/Diner**

18' x 9'2 (5.49m x 2.79m)

With a range of base units and matching wall cupboards complimented by rounded edge work surfaces with tiled splash backs. Inset carbonate sink unit with rinsing sink and mixer taps. Gas cooker point having extractor hood over, plumbing for automatic washing machine and integral fridge freezer. White uPVC double glazed window and matching door.

To the Dining Area: Breakfast Bar, radiator and laminate flooring.

**Bedroom 1**

10'6 x 22'4 (3.20m x 6.81m)

Radiator, power points, carpet and white uPVC double glazed window.

**Bedroom 2**

10'6 x 7'6 (3.20m x 2.29m)

Radiator, power points, carpet and white uPVC double glazed window.

**Bedroom 3**

10'4 x 8'2 (3.15m x 2.49m)

Radiator, power points, carpet and white uPVC double glazed window.

**Bathroom**

Comprising of a four piece white suite including low flush WC, panelled bath and corner shower enclosure having a Mira control unit and shower fitted, pedestal wash hand basin and laminate flooring. Range of built in louvre doored storage cupboards, radiator, tiled walls, extractor fan and white uPVC double glazed window.

**Exterior**

There are garden areas to the front and rear. Front garden being mainly laid to lawn with stocked borders and wide concreted driveway providing off road parking and leading to the Garage.

Enclosed South facing rear garden with large flagged patio area, stocked borders, mature hedging and Timber Tool Store. Outside cold water tap and security lighting.

**Garage**

16'2 x 8'8(internal measurements) (4.93m x 2.64m(internal measurements))

Having metal up and over door and having light laid on. Also houses the Glow Worm combination gas fired central heating boiler. Personnel door to the rear garden.

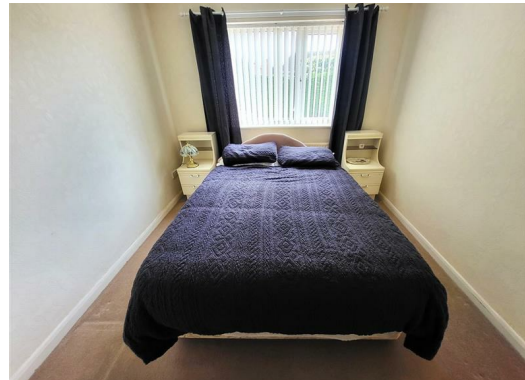
**Directions**

From Rhyl proceed via Vale Road and Rhuddlan Road(A525) and onto Rhuddlan. On reaching Rhuddlan turn right before the Golf Club onto Highlands Road and take the second right onto Barrfield Road. Take the first left onto Ffordd Nant, proceed down past The Green and take the next right into Ffordd Ffynnon with Number 13 being found on the left hand side.

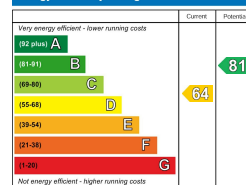
**Agents Notes**

Please Read Carefully

1. All dimensions are approximate and no SERVICES or APPLIANCES have been tested.
2. These details are prepared in the firms capacity as Estate Agents and express our opinion as the property existed on the day of inspection.
3. Any interested party is advised to obtain independent advice on the property prior to a legal commitment to purchase.
4. All viewings and negotiations are to be carried out through The Agents.
5. This sales detail is protected by the Laws of Copyright.
6. Any prospective purchaser of this property will be required to provide formal confirmation of identity and finance to comply with legal regulations.
7. Details prepared 25th March 2024
8. We can confirm that Jones & Redfearn Estate Agents are members of The Property Ombudsman Scheme with Reference Number - N00766-0
9. ANY OFFERS SUBMITTED ON THIS PROPERTY NEED TO BE ACCOMPANIED BY WRITTEN PROOF OF FINANCE.
10. COUNCIL TAX BAND D - FREEHOLD



**Energy Efficiency Rating**



**Environmental Impact (CO<sub>2</sub>) Rating**

