



Empire Square West, SE1

£350,000

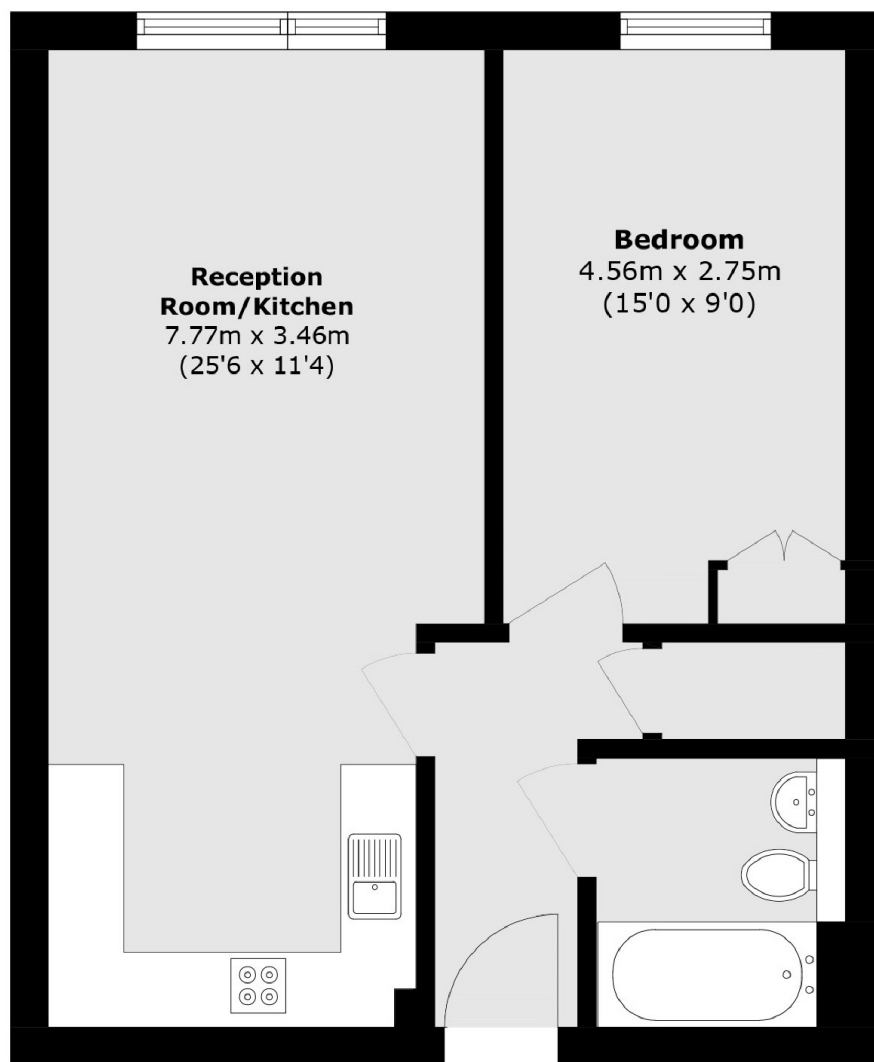
A highly attractive one bedroom apartment with a spacious open plan living room and kitchen, a generous double bedroom and three piece bathroom. Benefitting from a 24 hour concierge, lift access and being sold chain free. Cash Buyers Only.

Empire Square West is enviably located in the heart of SE1 at the foot of Borough High Street within 0.4 miles of London Bridge Station and Borough Market, with Borough underground just around the corner.

Features

- Cash Buyers Only
- One Double Bedroom
- Open Plan Living Space
- 526 Sq Ft
- 24 Hour Concierge
- Very Central Location
- Excellent Transport Links
- Chain Free Sale

Empire Square West, London, SE1



Total area (approx.): 48.9 sq. m (526.3 sq. ft)

Dexters

London Bridge
54 Borough High Street
London
SE1 1XL
Sales
020 7650 5 100

Energy Rating: D. We aim to make our particulars both accurate and reliable. However they are not guaranteed; nor do they form part of an offer or contract. If you require clarification on any points then please contact us, especially if you're traveling some distance to view. Please note that appliances and heating systems have not been tested and therefore no warranties can be given as to their good working order.

 **RICS** | Regulated
Estate Agent
and Letting Agent

[dexters.co.uk](https://www.dexters.co.uk)