



George Row, SE16

£365,000

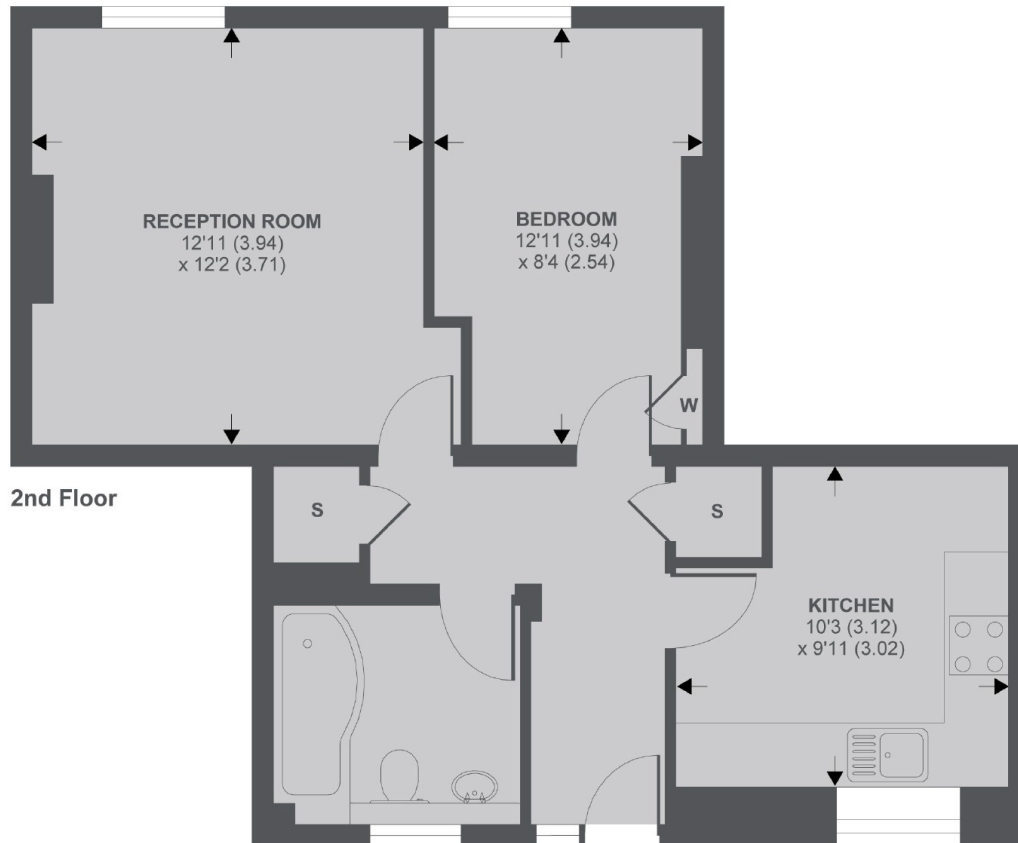
An immaculately presented second floor flat set within an attractive red brick block, with a large modern kitchen, with room for a table, a separate living room with hard wood floors & a smart three piece bathroom.

George Row is enviably located next to Shad Thames, just back from the South Bank, roughly 700 yards from Bermondsey Tube. London Bridge, Borough Market & the Shard are all within easy reach. Tower Hill is just over Tower Bridge.

Features

- Generous Living Room
- Large Modern Kitchen
- Hard Wood Floors
- Permit Parking Available
- Long Lease
- Lift Access

George Row, London, SE16



George Row SE16

APPROX FLOOR AREA 524 SQ.FT 48.6 SQ.M

Copyright nichecom.co.uk 2018 REF : 330488

Dexters

London Bridge
54 Borough High Street
London
SE1 1XL

Sales
020 7650 5 100

Energy Rating: C. We aim to make our particulars both accurate and reliable. However they are not guaranteed; nor do they form part of an offer or contract. If you require clarification on any points then please contact us, especially if you're traveling some distance to view. Please note that appliances and heating systems have not been tested and therefore no warranties can be given as to their good working order.

 **RICS** | Regulated
Estate Agent
and Letting Agent

dexters.co.uk