

## Paradise Street, SE16

£560,000

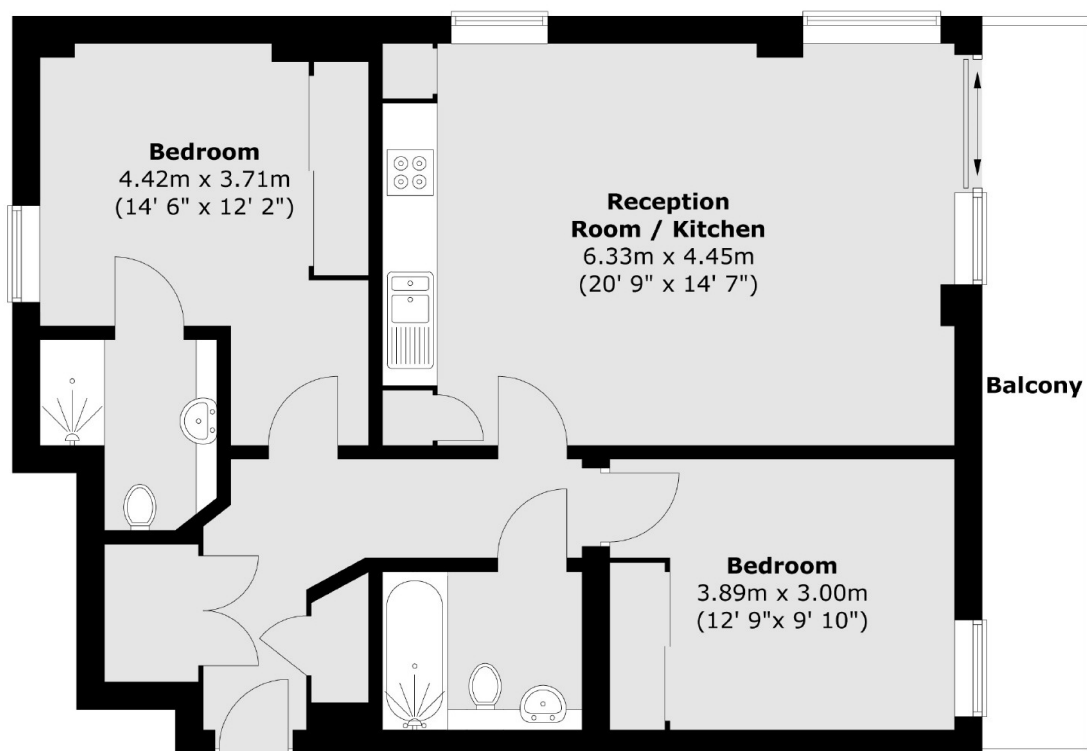
Located moments from the river, this two double bedroom apartment is immaculately presented and boasts two bathrooms, a spacious open plan kitchen and living space, private balcony and ample storage.

Mission Point is located only 0.2 miles from Bermondsey station and 0.2 miles from Rotherhithe station. The apartment is moments from Southwark Park, the river, a range of shops, café's and food markets.

### Features

- Two Double Bedrooms
- Two Bathrooms
- Private Balcony
- Extremely Quiet Location
- Bike Storage

Paradise Street,  
London, SE16



Total area (approx.) : 74.3 sq. m (800 sq. ft)  
Total balcony area (approx.) : 8.8 sq. m (95 sq. ft)