



Surrey Row, SE1

£900,000

A rarely available, over 1,700 sq ft, split level property, currently set out as an office space, over three floors, with its own front door, three WCs, secure off-street parking and the potential to be converted to a stunning two or three bedroom apartment.

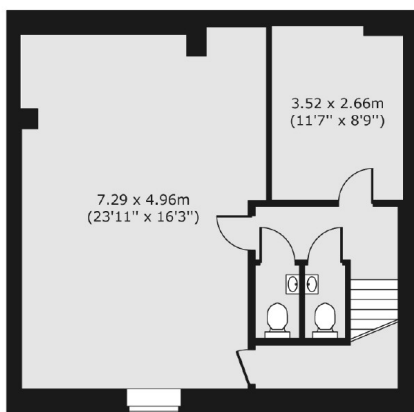
Surrey Row runs between Blackfriars Road & Great Suffolk Street in central SE1, 0.2 miles from Southwark & 0.5 miles from Waterloo, with London Bridge, Borough Market, Flat Iron Square & the South Bank all in easy reach.

Features

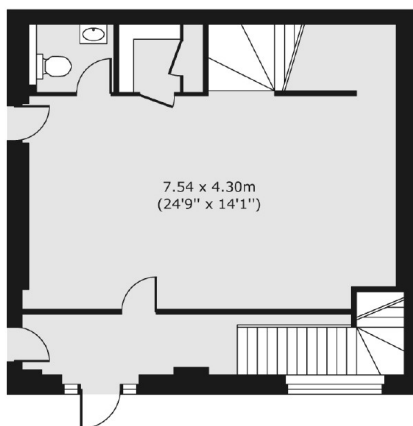
- Triplex Apartment
- Potential for 2-3 Bedrooms
- Over 1,700 sq ft
- Secure Off-Street Parking
- Very Central Location
- Cash buyers Only

Surrey Row, London, SE1

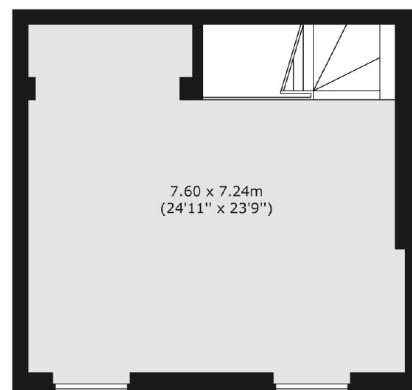
Lower Ground Floor



Raised Ground Floor



First Floor



Total area (approx.) 161.88 sq. m (1,742 sq. ft)

Dexters

London Bridge
54 Borough High Street
London
SE1 1XL
Sales
020 7650 5 100

Energy Rating: . We aim to make our particulars both accurate and reliable. However they are not guaranteed; nor do they form part of an offer or contract. If you require clarification on any points then please contact us, especially if you're traveling some distance to view. Please note that appliances and heating systems have not been tested and therefore no warranties can be given as to their good working order.

 **RICS** | Regulated
Estate Agent
and Letting Agent

[dexters.co.uk](https://www.dexters.co.uk)