



Surrey Square, SE17

£1,269 Per week

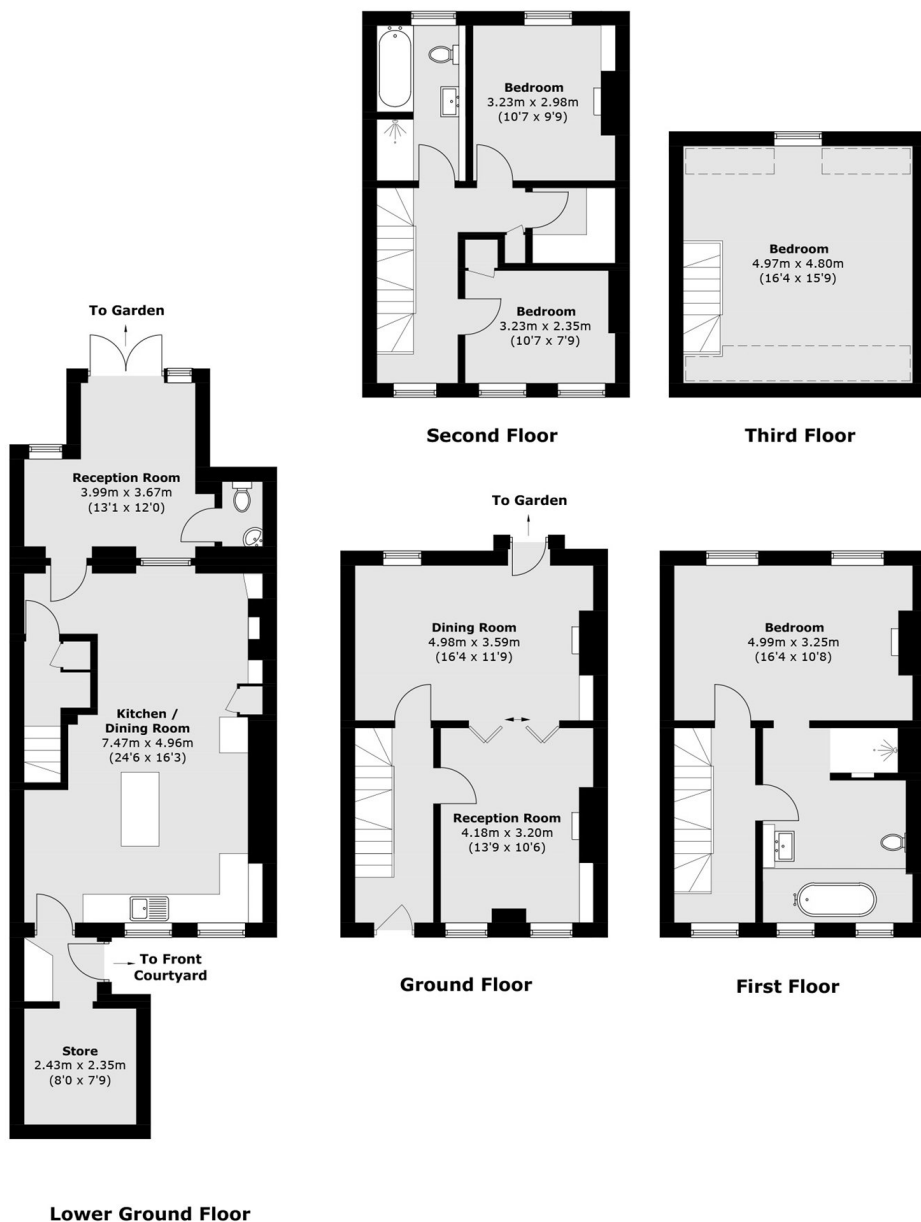
This Grade II listed house comes in at over 2,000sqft, with four double bedrooms, two large family bathrooms, a downstairs WC and a large private garden with an excellent patio area. With recent renovations throughout and fantastic city views, this property offers an incredible modern-style that provides a great deal of character from top to bottom.

Surrey Square sits in a quiet residential part of south London, the delights of Borough, Bermondsey Street and London Bridge all very easily accessible. Elephant and Castle (Northern line, Bakerloo line and Thameslink rail services), Borough (Northern line) and London Bridge stations (Jubilee line, Northern line and mainline rail) are all within walking distances.

Features

- 4 Double Bedrooms
- Over 2,000sqft
- Recently Renovated
- Fantastic Location
- Private Garden
- Stunning Views

Surrey Square, London, SE17



Total area (approx.): 197.2 sq. m (2,122.7 sq. ft)