



## Weston Street, SE1

### £725,000

Immaculately presented & fully refurbished to an exceptional standard, this elegant second-floor residence features two spacious double bedrooms & two beautifully appointed bathrooms. A refined open-plan living area incorporates a sleek, high-spec kitchen & opens onto a west-facing balcony, overlooking Guy Street Park. Sold with secure, allocated parking & a Share of Freehold.

Perfectly positioned on Weston Street in the heart of SE1, Bridgewalk Heights is just 500 feet from London Bridge Station. Bermondsey Street's celebrated food scene, galleries & cafés are moments away, while the South Bank offers iconic riverside walks past Borough Market, Tate Modern & numerous cultural landmarks.

### Features

- Share of Freehold
- Fully Refurbished
- High Spec Finish
- Two Double Bedrooms
- Two Modern Bathrooms
- Open Plan Living
- West-Facing Balcony
- Secure Allocated Parking





## Weston Street, SE1

The heart of the apartment is a stunning open-plan living and dining space, seamlessly connecting to a sleek, high-spec kitchen. Floor-to-ceiling doors open onto a private west-facing balcony, offering tranquil views over the leafy Guy Street Park and providing a perfect backdrop for relaxing or entertaining.

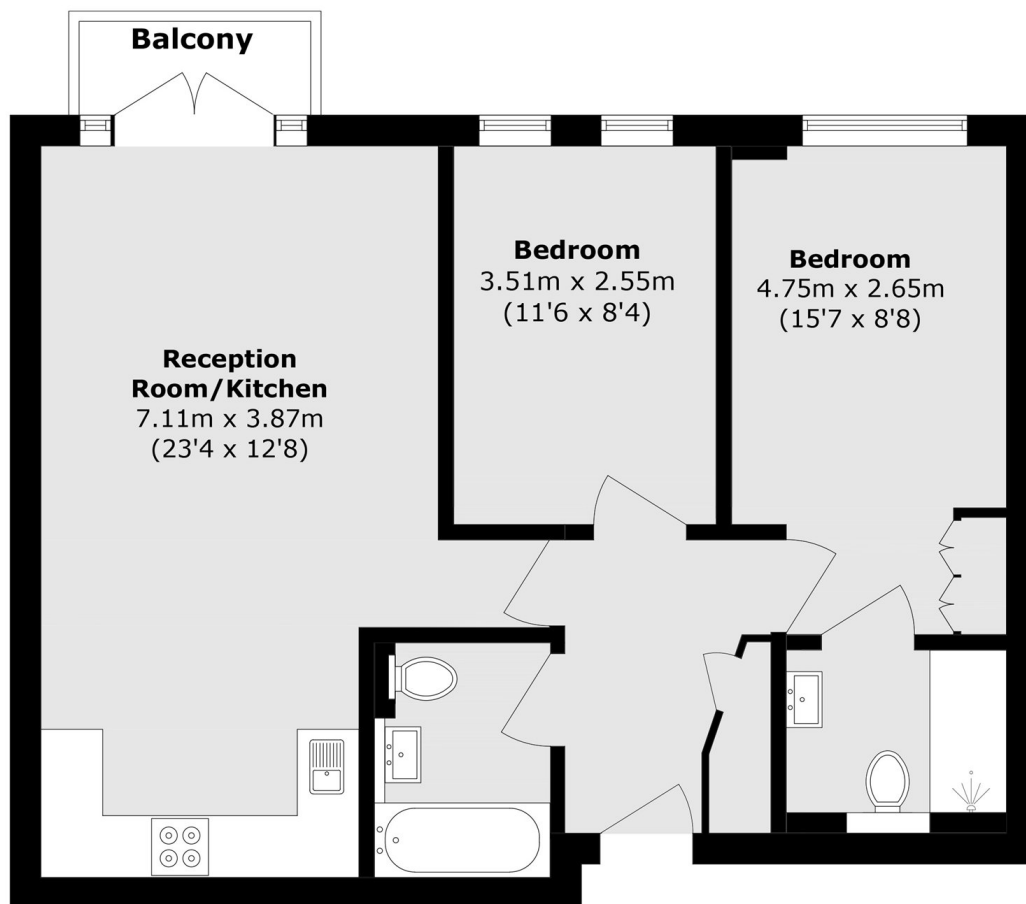
Both bedrooms are generously proportioned doubles, with the master suite served by a stylish, modern shower room. An additional bathroom and extensive built-in storage, accessed from the hallway, complete the accommodation.

Enhancing the appeal of this rarely available SE1 residence is secure, allocated parking, combining convenience with the prestige of a truly desirable central location. Every element of the home reflects a commitment to refined living and modern luxury.





# Weston Street, London, SE1



Total area (approx.): 64.7 sq. m (696.4 sq. ft)  
Balcony area (approx.): 2.0 sq. m (21.5 sq. ft)