



## Manciple Street, SE1

£576 Per week

This spacious two bedroom apartment comes in at over 800sqft with both bedrooms being on the block corner which provides ample natural light throughout. Comes with a large separate kitchen, an enormous storage/utility room and is situated next to Tabard Garden, moments away from Borough Station.

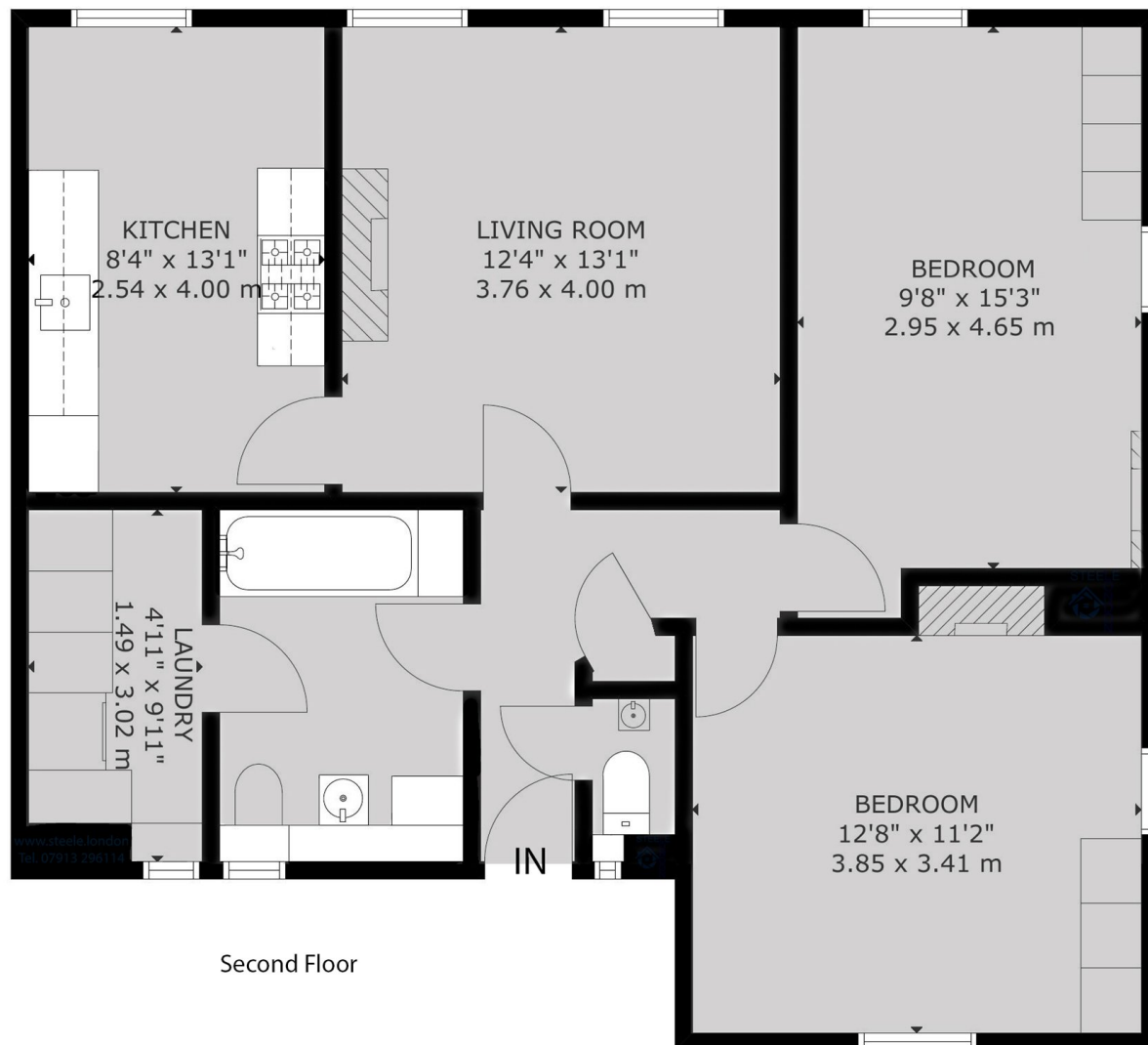
Located within a short walk of Borough tube station and within easy access of London Bridge station, Borough Market and the City of London.

### Features

- Two Double Bedroom
- Bathroom and Separate WC
- Separate Kitchen
- Plenty of Storage
- Herringbone Flooring
- Fantastic Location

# Manciple Street, London, SE1

Strood House SE1  
Gross Internal Area:  
75 Sq.m - 804 Sq.ft



Second Floor

## Dexters

London Bridge  
54 Borough High Street  
London  
SE1 1XL  
Lettings  
020 7650 5101

Energy Rating: C. We aim to make our particulars both accurate and reliable. However they are not guaranteed; nor do they form part of an offer or contract. If you require clarification on any points then please contact us, especially if you're traveling some distance to view. Please note that appliances and heating systems have not been tested and therefore no warranties can be given as to their good working order.



dexters.co.uk