



Oakey Lane, SE1

£775,000

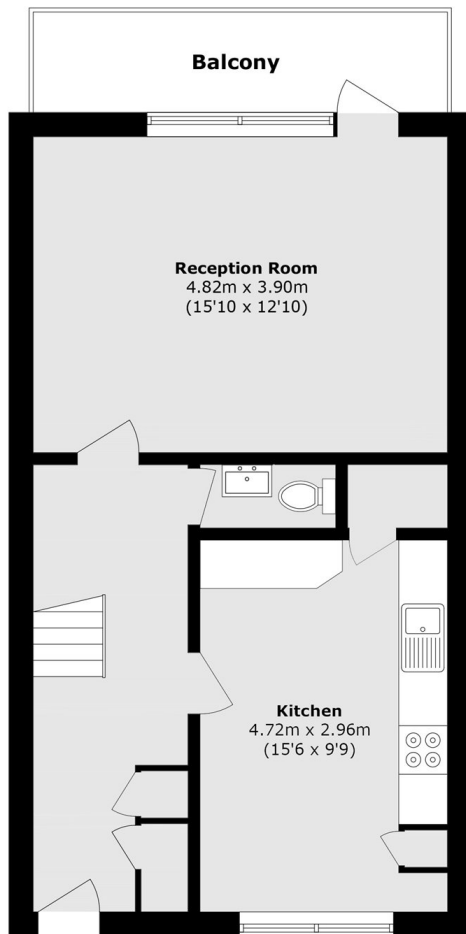
A highly attractive and recently redecorated duplex apartment, with a very large kitchen-diner and a similarly generous living room, leading out onto a private balcony, plus four bedrooms, a three piece bathroom, and a further front terrace. Permit parking is available.

King Edward Walk is a quite side street, enviably located, moments from both Waterloo and Lambeth North Stations, nearby to Lower Marsh, the Cut, the Imperial War Museum and the South Bank, with numerous attractions, amenities and excellent links into Westminster and the City.

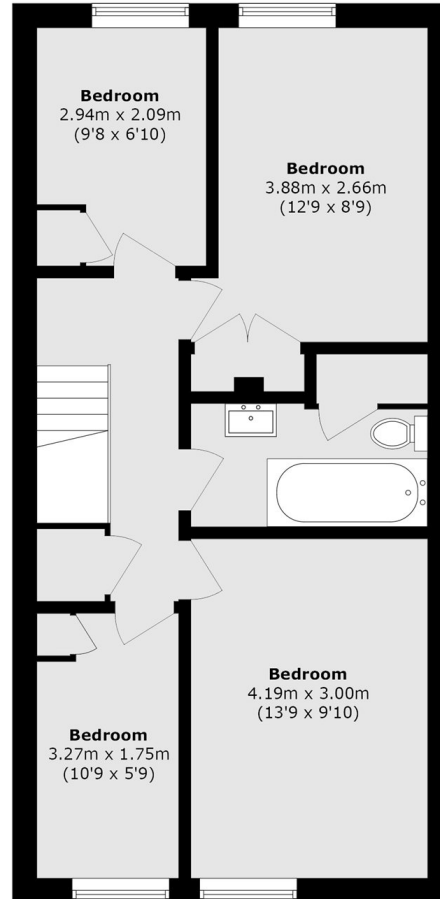
Features

- Four Bedrooms
- Duplex Apartment
- Private Balcony & Front Terrace
- Large Kitchen-Diner
- Spacious Living Room
- Permit Parking Available
- Chain Free Sale

Oakey Lane, London, SE1



Ground Floor



First Floor

Total area (approx.): 99.3 sq. m (1068.8 sq. ft)

Balcony area (approx.): 6.3 sq. m (67.8 sq. ft)