



Empire Square West, SE1

£496 Per week

A well presented one bedroom apartment situated on the fourth floor of this modern, landmark development with on-site concierge.

Conveniently located a short walk from London Bridge and Borough Stations. The ever popular Borough Market and Bermondsey Street are also easily accessible.

Features

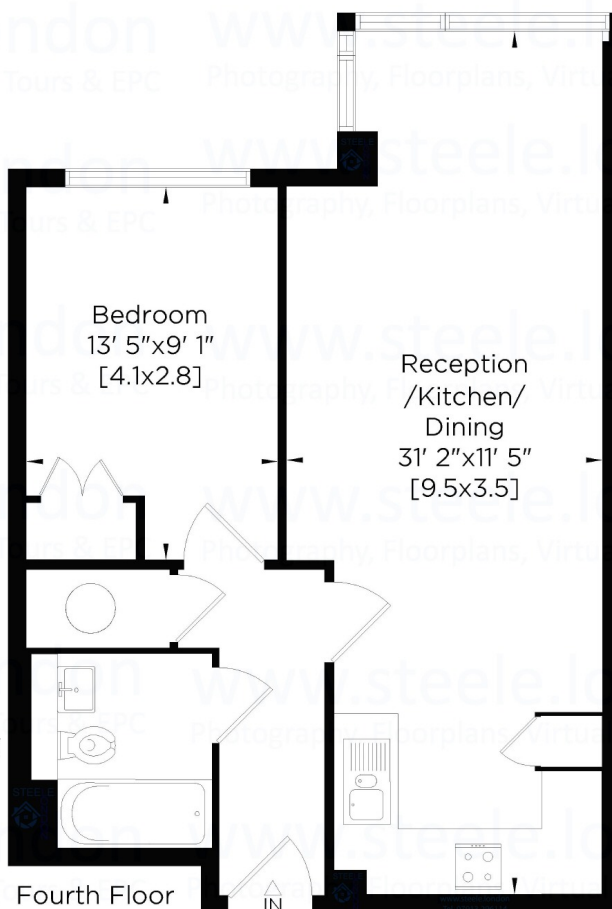
One Bedroom
Well Presented
24hr Concierge
Great Location
Wood Flooring

Empire Square West, London, SE1

Empire Square SE1
Gross Internal Area:
53 Sq. metres
566 Sq. feet



Prepared for Dexters Estate Agents
www.dexters.co.uk
To Let 1 Bedroom Flat Empire Square Borough SE1
Whilst every attempt has been made to ensure the accuracy of
this Lettings floor plan, measurements of doors, windows, rooms
and Sq Footage are approximate. The actual property will vary. For
identification purposes only. Not to be used as part of the decision
to buy. Price on application for a 90 day licence to use this plan.
No appliances tested. ©02102024. Not to scale.
Photography, Video, Floor Plans, Virtual
Tours & EPC by www.steele.london
Email: patricia@steele.london
Tel: 07847 219401 07913 296114



Dexters

London Bridge
54 Borough High Street
London
SE1 1XL
Lettings
020 7650 5101

Energy Rating: B. We aim to make our particulars both accurate and reliable. However they are not guaranteed; nor do they form part of an offer or contract. If you require clarification on any points then please contact us, especially if you're traveling some distance to view. Please note that appliances and heating systems have not been tested and therefore no warranties can be given as to their good working order.



dexters.co.uk