



## **Triptych Place, SE1**

**£1,450** Per week

**Dexters**



## Triptych Place, SE1

A two bedroom two bathroom apartment to rent in SE1's newest development, Triptych. Set on the 5th floor, the apartment is a great example of open plan modern living.

A two bedroom two bathroom apartment to rent in SE1's newest development, Triptych. Set on the 5th floor, the apartment is a great example of open plan modern living.

Triptych, one of SE1's premier new developments, is just moments from the iconic Borough Market, Shakespeare's Globe Theatre, and the Tate Modern. With excellent connectivity via London Bridge Station and the Millennium Bridge, it offers the perfect blend of culture, convenience, and city living.

### Features

- Two Bedrooms
- Two Bathrooms
- 24hr Concierge
- Air Conditioning
- Residents Cinema





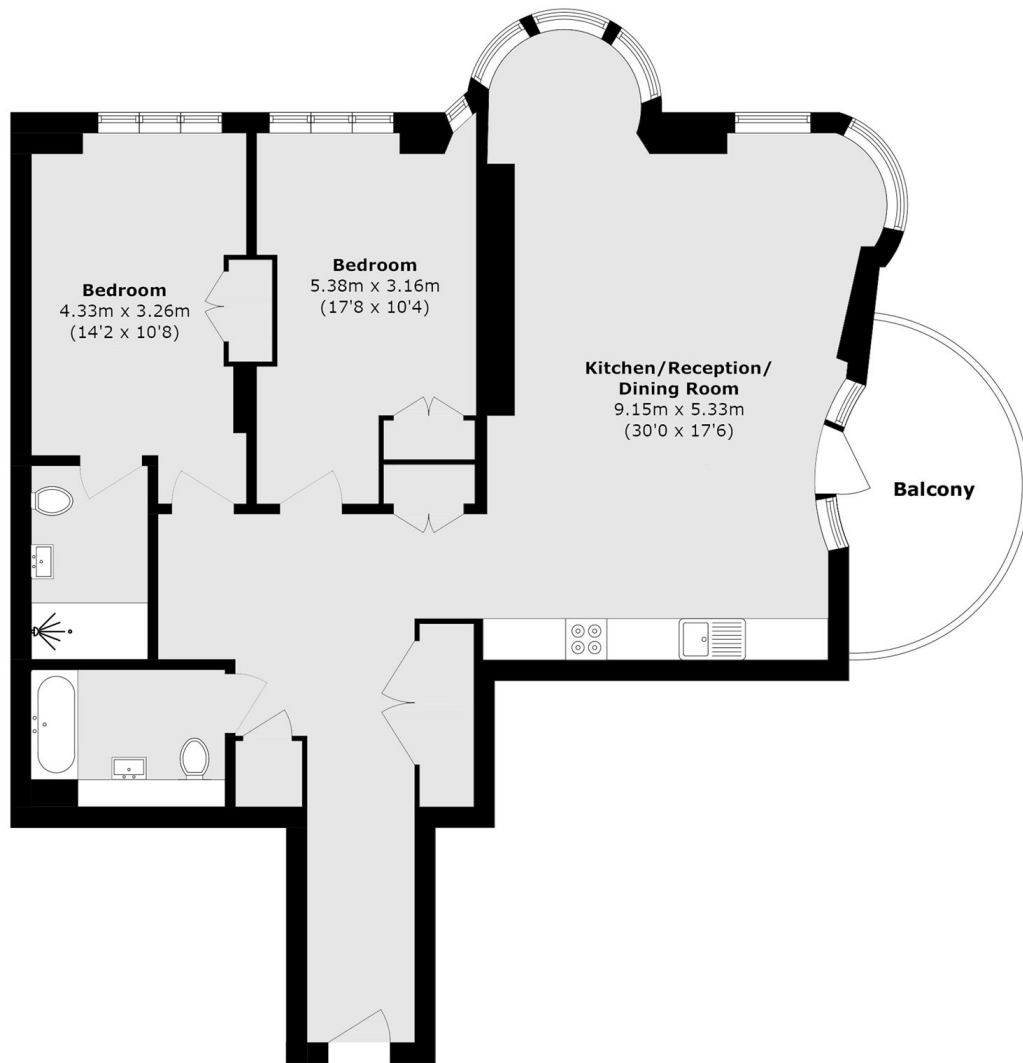








# Triptych Place, London, SE1



## Sixth Floor

Total area (approx.): 127.9 sq. m (1376.7 sq. ft)

Balcony area (approx.): 9.6 sq. m (103.3 sq. ft)

# Dexters

London Bridge  
54 Borough High Street  
London  
SE1 1XL  
Lettings  
020 7650 5101

Energy Rating: B. We aim to make our particulars both accurate and reliable. However they are not guaranteed; nor do they form part of an offer or contract. If you require clarification on any points then please contact us, especially if you're traveling some distance to view. Please note that appliances and heating systems have not been tested and therefore no warranties can be given as to their good working order.

 **RICS** | Regulated  
Estate Agent  
and Letting Agent

[dexters.co.uk](https://www.dexters.co.uk)