



Southwark Bridge Road, SE1

£425,000

An immaculately presented studio apartment situated on the 15th floor, featuring a fully fitted modern kitchen, a generous and well-defined seating area, underfloor heating throughout, ample built-in storage, and a stylish three-piece bathroom. This is a chain free sale.

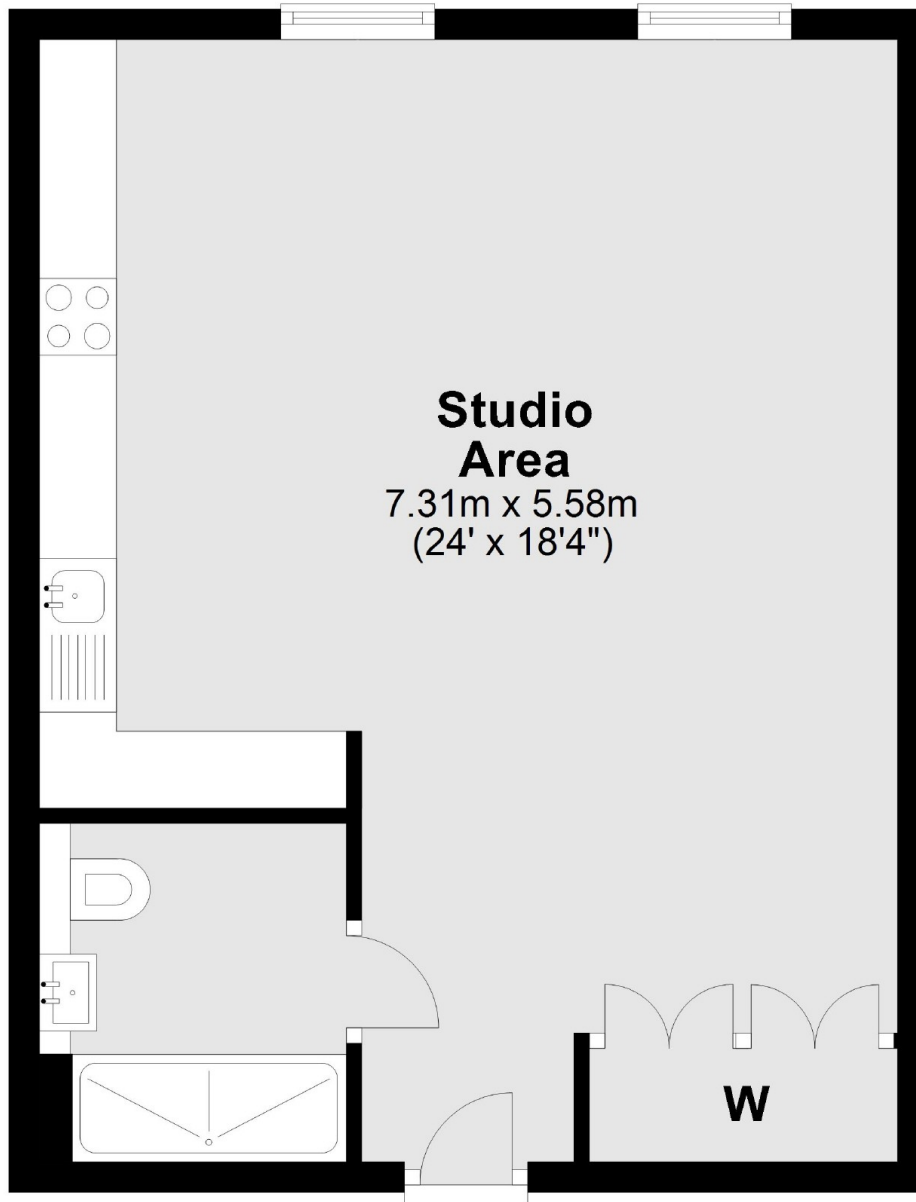
251 Southwark Bridge Road, is one of SE1's premier new developments at the foot of Southwark Bridge Road, almost adjacent to Elephant & Castle Station. London Bridge, Southwark & Waterloo are all within easy reach.

Features

- Very High Spec
- 24 Hour Concierge
- Residents' Gym & Leisure Facilities
- Lift Access & Secure Entry
- Valid EWS1 in place
- Chain Free Sale

**Southwark Bridge Road,
London, SE1**

15th Floor



Total area: approx. 40.8 sq. metres (438.8 sq. feet)

Dexters

London Bridge
54 Borough High Street
London
SE1 1XL
Sales
020 7650 5 100

Energy Rating: B. We aim to make our particulars both accurate and reliable. However they are not guaranteed; nor do they form part of an offer or contract. If you require clarification on any points then please contact us, especially if you're traveling some distance to view. Please note that appliances and heating systems have not been tested and therefore no warranties can be given as to their good working order.

RICS | Regulated
Estate Agent
and Letting Agent

dexters.co.uk