



## Green Walk, SE1

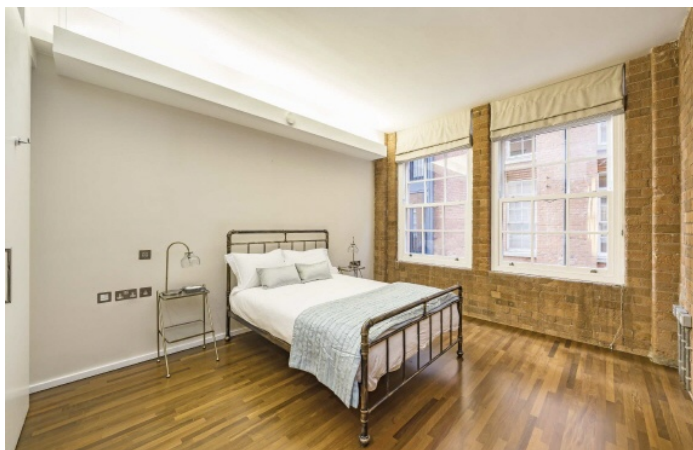
£1,200,000

An immaculate Warehouse Conversion, spread over in excess of 1,200 sq ft, with exposed brick, large sash windows & high ceilings, a spacious open plan kitchen & living room, two double bedrooms & two bathrooms, sold with a Share of Freehold. This is a chain free sale.

The Jam Factory is one of SE1's most desirable developments, ideally situated on Rothsay Street, just moments from Bermondsey Street with its vibrant mix of restaurants, cafés, and galleries. London Bridge, Borough Market, and the South Bank are all within easy reach, offering an exceptional lifestyle in the heart of London.

### Features

- Over 1,200 Sq Ft
- High Ceilings & Sash Windows
- Two Double Bedrooms
- Two Bathrooms
- 24 Hour Concierge
- Valid EWS1 Form
- Chain Free Sale



## Green Walk, SE1

This apartment is a fantastic size with a very large living space, allowing ample room for dining, a separate seating area, a large full length kitchen and and is flooded with light due to its many sash windows.

Both bedrooms are generous doubles, each with large built-in wardrobes. The master bedroom benefits from an en-suite shower room, whilst the second bedroom is are served by a three piece family bathroom.

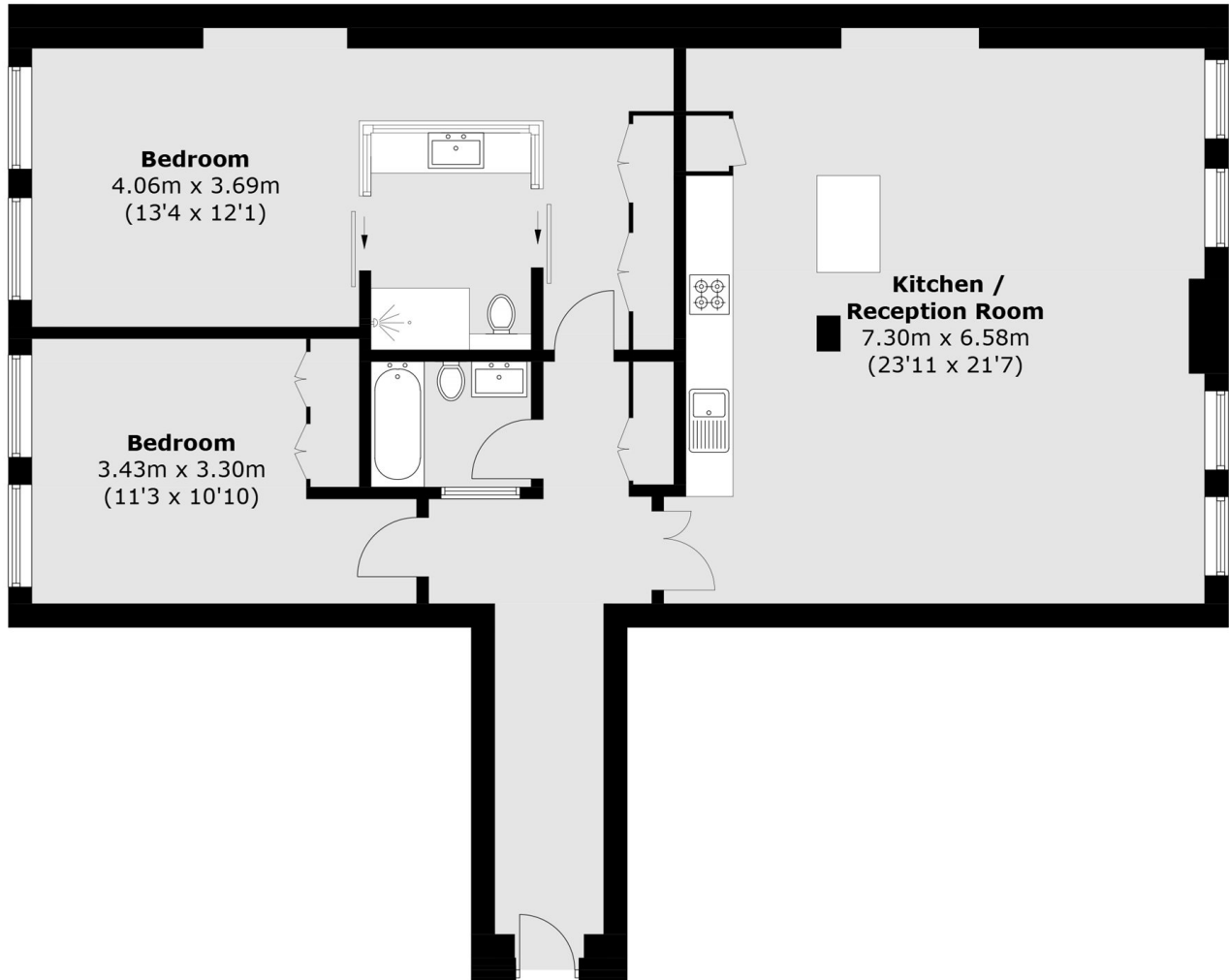
The former Hartley's Jam factory is iconic, award-winning development, with an attractive blend of period charm and contemporary design, accentuating the best original features, yet benefiting from modern fittings throughout.

Residents enjoy a host of amenities including an on-site concierge, landscaped communal gardens, scenic walkways, and a children's play area, fostering a true sense of community.





# Green Walk, London, SE1



Total area (approx.): 111.9 sq. m (1,204.5 sq. ft)

## Dexters

London Bridge  
54 Borough High Street  
London  
SE1 1XL  
Sales  
020 7650 5 100

Energy Rating: . We aim to make our particulars both accurate and reliable. However they are not guaranteed; nor do they form part of an offer or contract. If you require clarification on any points then please contact us, especially if you're traveling some distance to view. Please note that appliances and heating systems have not been tested and therefore no warranties can be given as to their good working order.

 **RICS** | Regulated  
Estate Agent  
and Letting Agent

[dexters.co.uk](https://www.dexters.co.uk)