



Snowsfields, SE1

£950,000

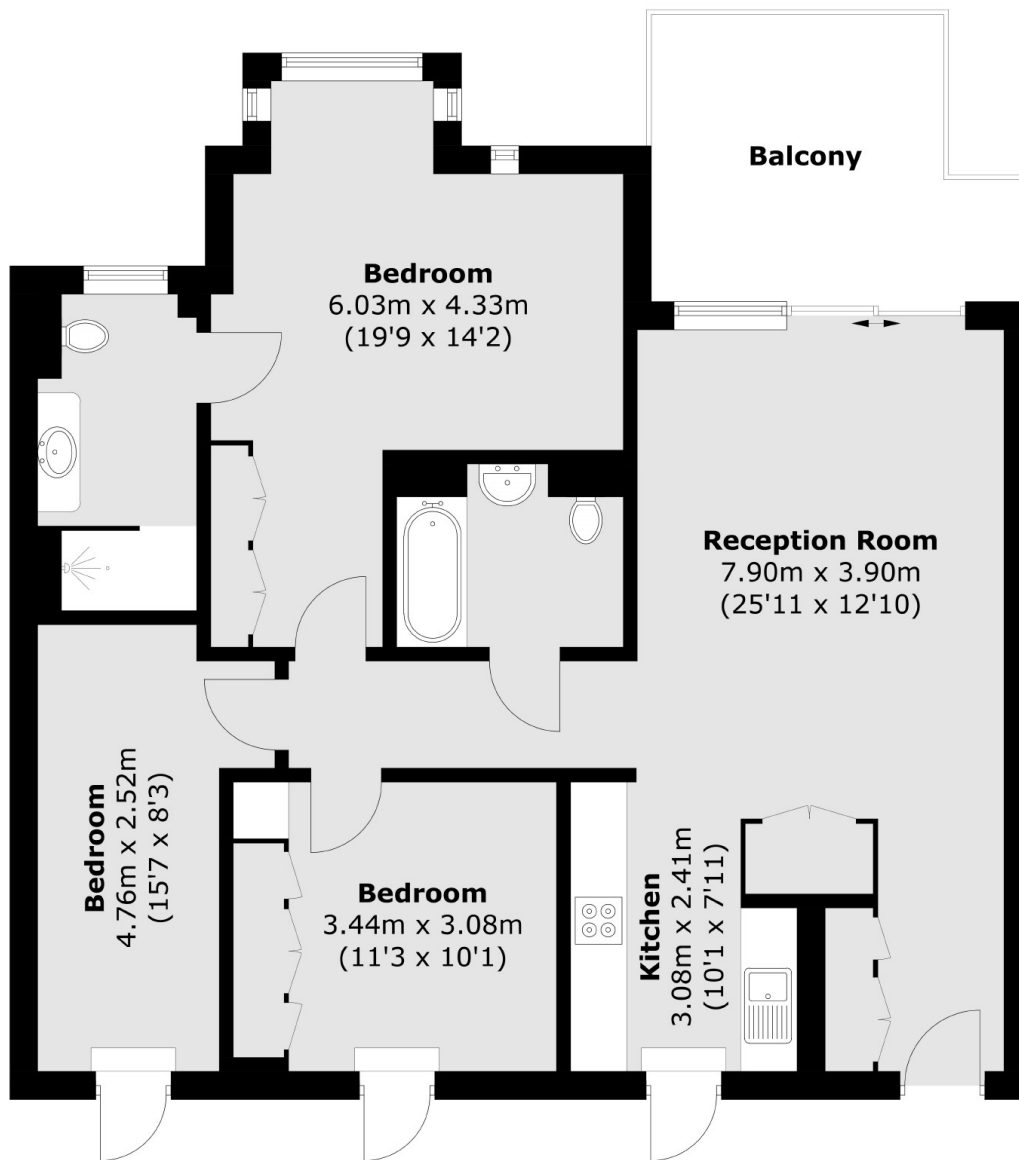
A highly attractive, modern apartment in Snowsfields Yard, with a spacious living room, leading out onto a large private balcony, a high spec kitchen, three bedrooms & two bathrooms. Share of Freehold, 24 hour concierge & sold chain free. Offers in excess of £950,000.

Snowsfields Yard is incredibly well located, adjacent to London Bridge Station, moments from Bermondsey Street, the Shard and the river, with excellent transport links and a numerous local amenities.

Features

- OIEO £950,000
- Share of Freehold
- High Spec Apartment
- Three Bedrooms
- Two Bathrooms
- Large Living Room
- Private Balcony
- Chain Free Sale

Snowsfields, London, SE1



Total area (approx.): 91.4 sq. m (983.8 sq. ft)
Balcony: 10.7 sq. m (115.2 sq. ft)

Dexters

London Bridge
54 Borough High Street
London
SE1 1XL
Sales
020 7650 5 100

Energy Rating: B. We aim to make our particulars both accurate and reliable. However they are not guaranteed; nor do they form part of an offer or contract. If you require clarification on any points then please contact us, especially if you're traveling some distance to view. Please note that appliances and heating systems have not been tested and therefore no warranties can be given as to their good working order.

 **RICS** | Regulated
Estate Agent
and Letting Agent

[dexters.co.uk](https://www.dexters.co.uk)