



## Law Street, SE1

£395,000

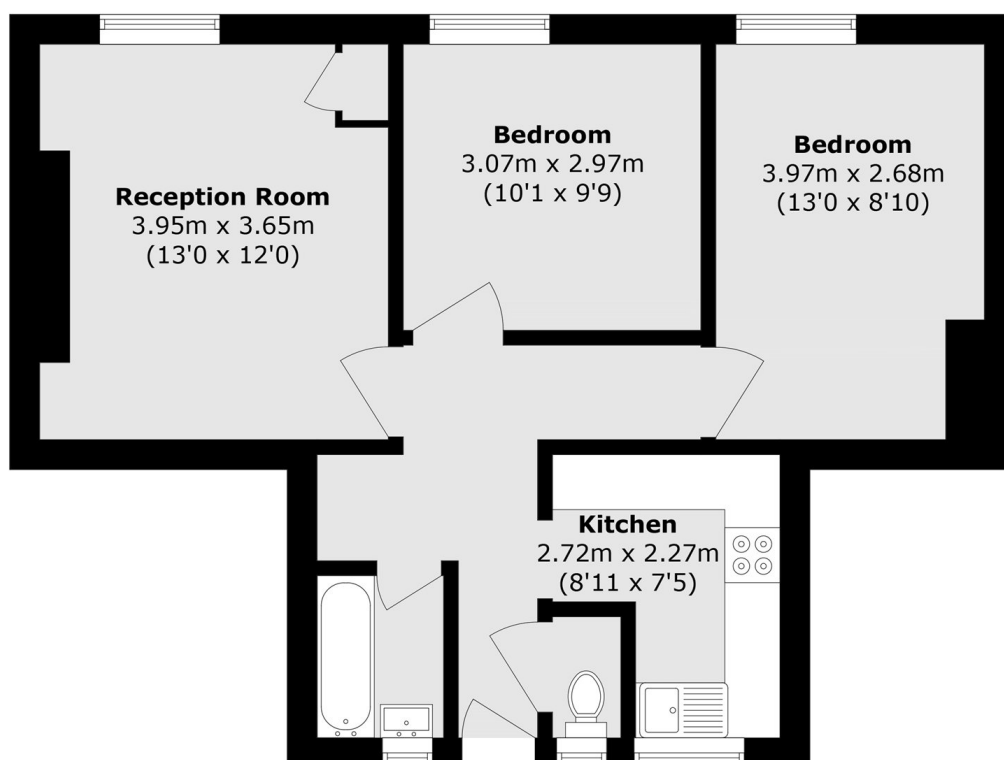
A smartly presented first-floor flat featuring two generous double bedrooms, set within a well-maintained, low-rise red-brick building. The property offers a separate modern kitchen, a bright and spacious living room, and a practical split bathroom. Large windows throughout provide excellent natural light and offer an attractive outlook.

Nestled just off Tabard Street by the leafy Tabard Gardens, this location puts you close to Borough Market, buzzing cafés, and lively pubs, with the South Bank and The Shard just a stroll away. London Bridge and Borough Stations are both nearby offering excellent links across the city. Nearby you will also find Kings College and Guy's Hospital.

### Features

- Two Double Bedrooms
- Separate Kitchen & Living Room
- Large Windows
- Quiet Residential Road
- Excellent Transport Links
- Chain Free Sale

# Law Street, London, SE1



Total area (approx.): 51.0 sq. m (548.9 sq. ft)