



Newington Causeway, SE1

£530 Per week

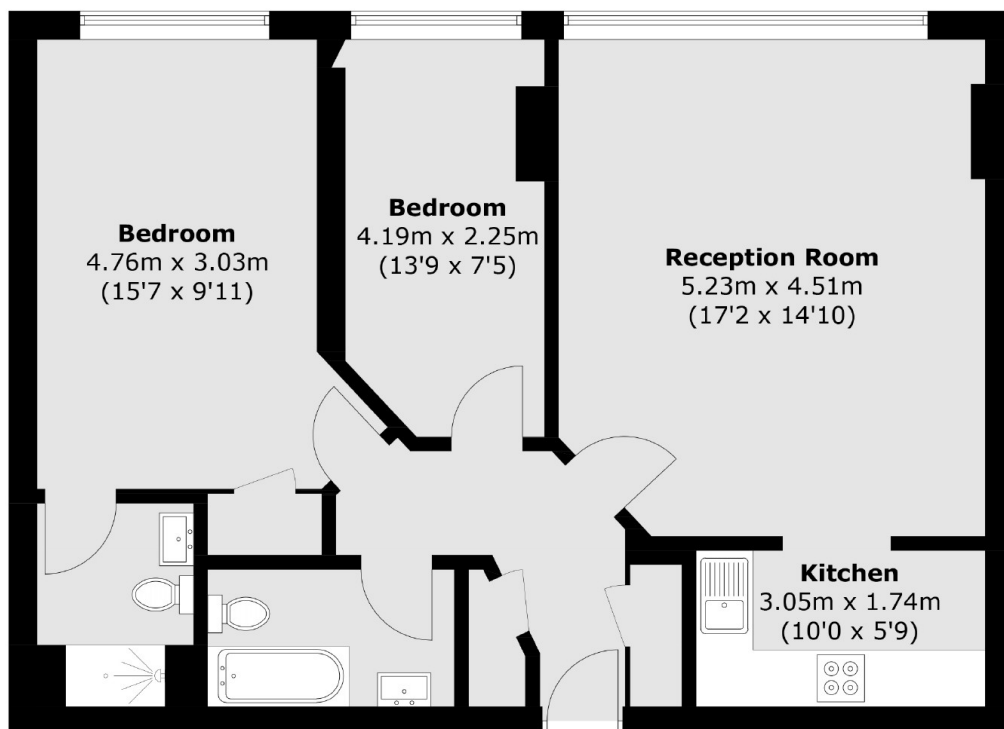
Two bedroom two bathroom apartment within the popular Metro Central Heights development. Features semi open-plan living with wooden floors throughout.

Zone 1. Elephant & Castle station is adjacent, with fantastic links into the City, via the Bakerloo, Northern Line & Mainline Rail. London Bridge & Waterloo are one stop away. There are numerous shops, bars & restaurants nearby.

Features

- Two Bedrooms
- Two Bathrooms
- Semi Open Plan Living
- Wooden Floors Throughout
- 24hr Concierge
- On Site Facilities

Newington Causeway, London, SE1



Total area (approx.): 70.6 sq. m (759.9 sq. ft)

Dexters

London Bridge
54 Borough High Street
London
SE1 1XL
Lettings
020 7650 5101

Energy Rating: C. We aim to make our particulars both accurate and reliable. However they are not guaranteed; nor do they form part of an offer or contract. If you require clarification on any points then please contact us, especially if you're traveling some distance to view. Please note that appliances and heating systems have not been tested and therefore no warranties can be given as to their good working order.

 **RICS** | Regulated
Estate Agent
and Letting Agent

[dexters.co.uk](https://www.dexters.co.uk)