



## Empire Square West, SE1

£575,000

A fantastic 8th floor apartment with stunning views, an open plan kitchen & living room, a very large private terrace, a generous double bedroom & modern bathroom. Secure parking & 24 hr concierge.

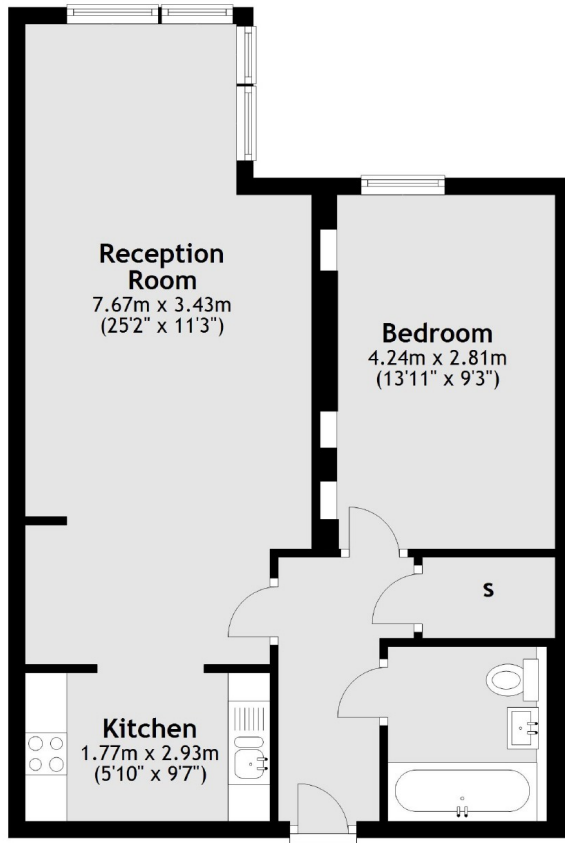
Located just 0.1 miles from Borough station and 0.3 miles from London Bridge station, Empire Square West is surrounded by shops, cafés, restaurants, delis and bars.

### Features

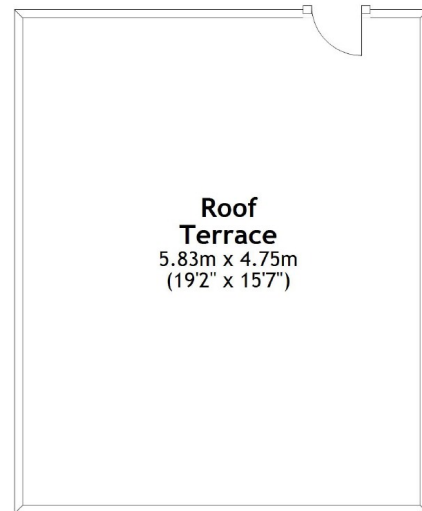
- Excellent Condition
- Large Private Terrace
- Incredible Views
- 24 hour Concierge
- Secure Underground Parking

# Empire Square West, London, SE1

## Eighth Floor



## Eighth Floor



Total area: approx. 52.7 sq. metres (567.2 sq. feet)