



Montague Close, SE1

£542 Per week

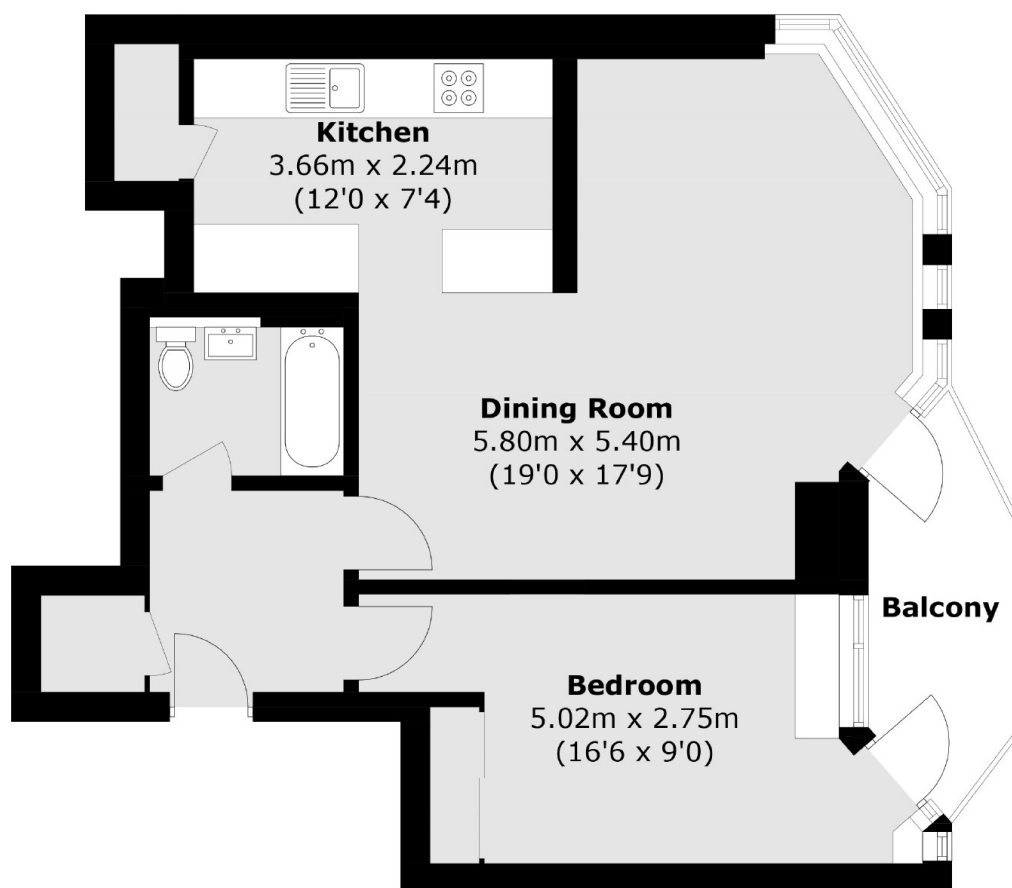
An well presented modern apartment with a generous open plan kitchen and living room, leading onto a private balcony, plus a large double bedroom, ample built in storage and a three piece bathroom.

Incredibly well located, tucked just back from Borough Market. London Bridge Station, the Thames, Bankside and the Shard are all very close by with numerous amenities and other attractions.

Features

- One Bedroom
- Borough Market
- South Bank
- Open Plan Living
- Secure Entry
- Private Balcony

Montague Close, London, SE1



Total area (approx.): 57.5 sq. m (618.9 sq. ft)
Balcony (approx.): 5.0 sq. m (53.8 sq. ft)