

Newington Causeway, SE1

£438 Per week

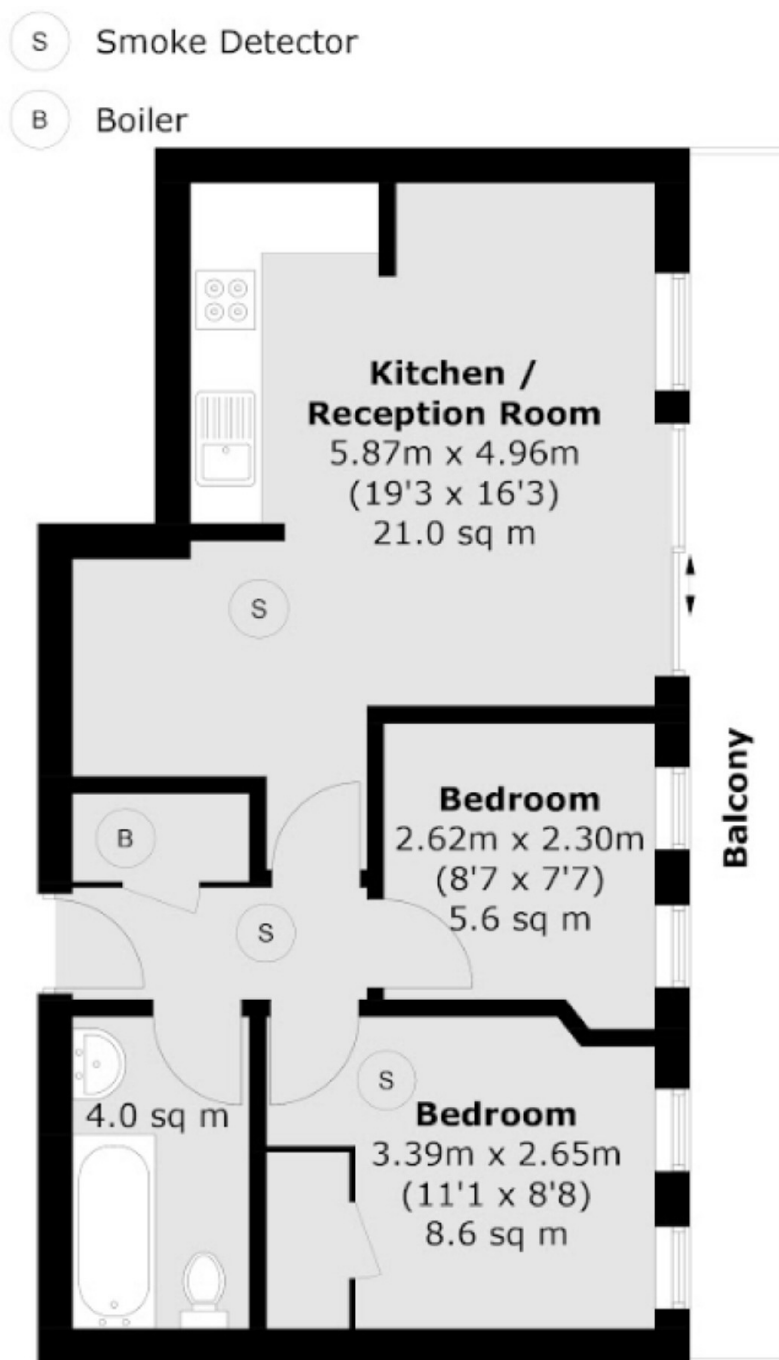
A newly redecorated two bedroom apartment situated on the fourth floor of this popular development featuring on-site concierge, gym and swimming pool. The property features large windows, a balcony, open plan living space and wood flooring.

Metro Central is superbly located for transport and is in the heart of the Elephant & Castle regeneration scheme. The Italian street food market Mercato Metropolitano is an excellent local option.

Features

- Newly Redecorated
- Two bedrooms
- One bathroom
- Balcony
- Open plan reception
- Gym

Newington Causeway, London, SE1



Total area (approx.): 45.5 sq. m (489.8 sq. ft)
Balcony area (approx.): 8.2 sq. m (88.3 sq. ft)