



## Lancaster Street, SE1

### £535,000

A high spec modern apartment with a spacious open plan living room and fully fitted modern kitchen, with ample room for a large dining table, a spacious modern bathroom, a utility and storage cupboard, plus a private balcony running off both the living room and the bedroom and access to a large communal roof terrace. Offers in excess of £535,000.

Zeiss Court is very well located, on Lancaster Street, tucked back off Blackfriars Road, perfectly situated for a multitude of food markets and transport links including Waterloo, Southwark & London Bridge. It is a real entertainment & cultural hub.

### Features

- Offers in excess of £535,000
- High Specification
- Under Floor Heating
- Open Plan Living
- Private Balcony
- Secure Entry & Bike Storage
- Communal Roof Terrace
- Long Lease



## Lancaster Street, SE1

The apartment is very thoughtfully designed, with a contemporary feel, high quality fully fixtures & fittings, an integrated sound system, Quartz Caestone work surfaces, under floor heating and floor to ceiling windows.

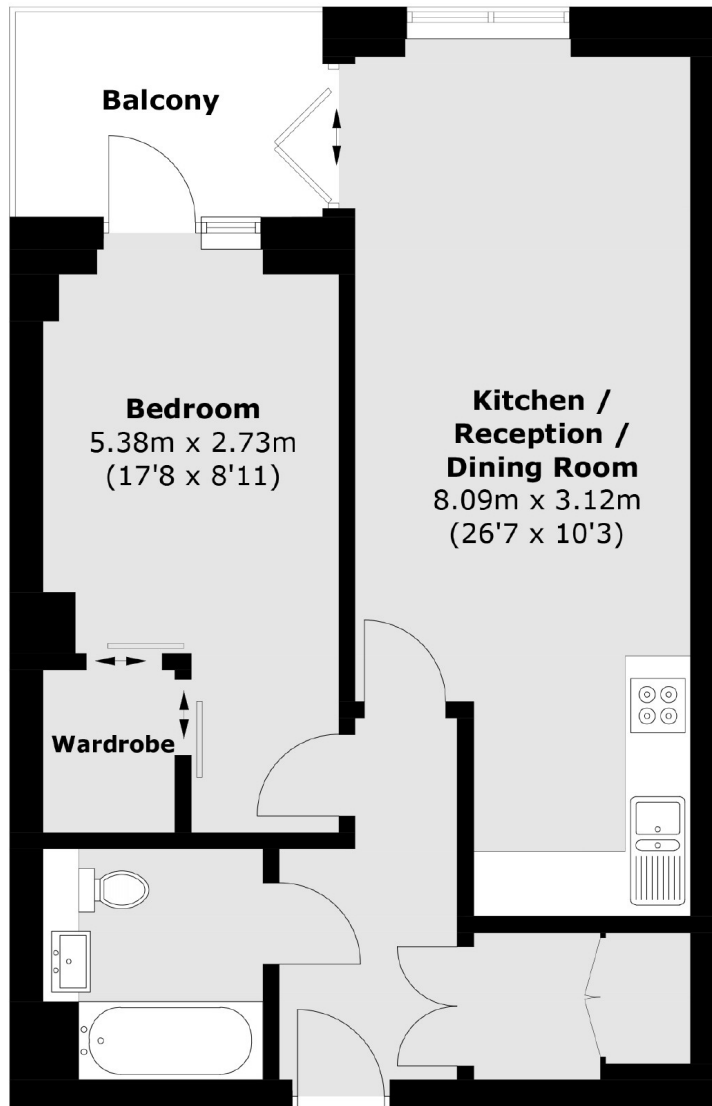
The bedroom benefits from a large walk-in wardrobe with ample hanging space and shelving. Alongside the three piece bathroom, there is a separate utility cupboard and great additional storage.

Completed in January 2016, the development is well-maintained and each apartment benefits from a long lease of 999 years from new. It is a small scale development with secure entry, bike storage and a genuine community feel.





# Lancaster Street, London, SE1



## First Floor

Total area (approx.): 52.2 sq. m (561.8 sq. ft)

Balcony area: 5.3 sq. m (57.0 sq. ft)