



Green Walk, SE1

£600 Per week

Split level loft style two bedroom, two bathroom apartment extended over 1015sq ft with high ceilings, exposed brick and beams in the award winning converted Hartleys Jam Factory.

The Jam Factory is located within a short walk of Bermondsey Street and within 0.5 miles of Borough and London Bridge stations.

Features

Amazing loft style apartment
Split level
Two double bedrooms
Two bathrooms
Outside space
1015 sq ft

Green Walk, London, SE1

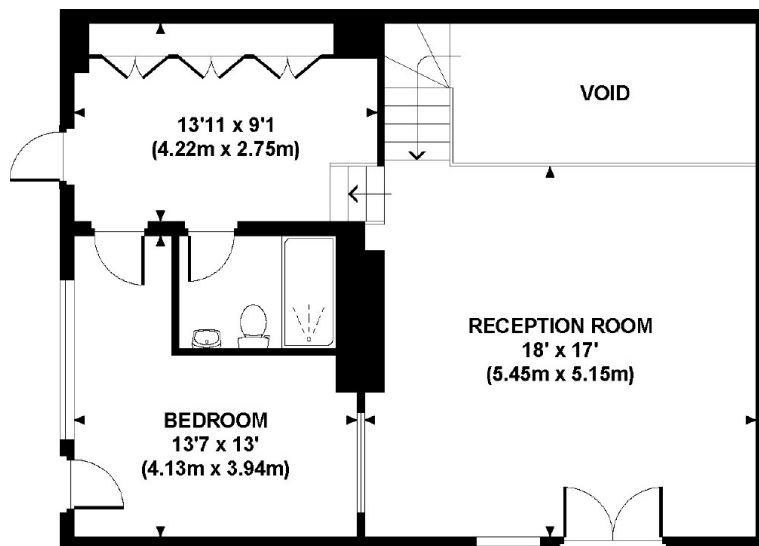
GREEN WALK, SE1

Approx. gross internal area

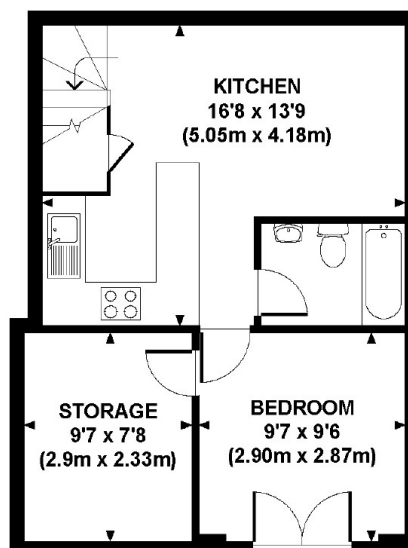
1015 Sq Ft. / 94.3 Sq M.

Representation of current layout

Not to scale.



GROUND FLOOR



BASEMENT

Dexters

London Bridge
54 Borough High Street
London
SE1 1XL

Lettings
020 7650 5101

Energy Rating: A. We aim to make our particulars both accurate and reliable. However they are not guaranteed; nor do they form part of an offer or contract. If you require clarification on any points then please contact us, especially if you're traveling some distance to view. Please note that appliances and heating systems have not been tested and therefore no warranties can be given as to their good working order.

 **RICS** | Regulated
Estate Agent
and Letting Agent

dexters.co.uk