



## Launcelot Street, SE1

### £385,000

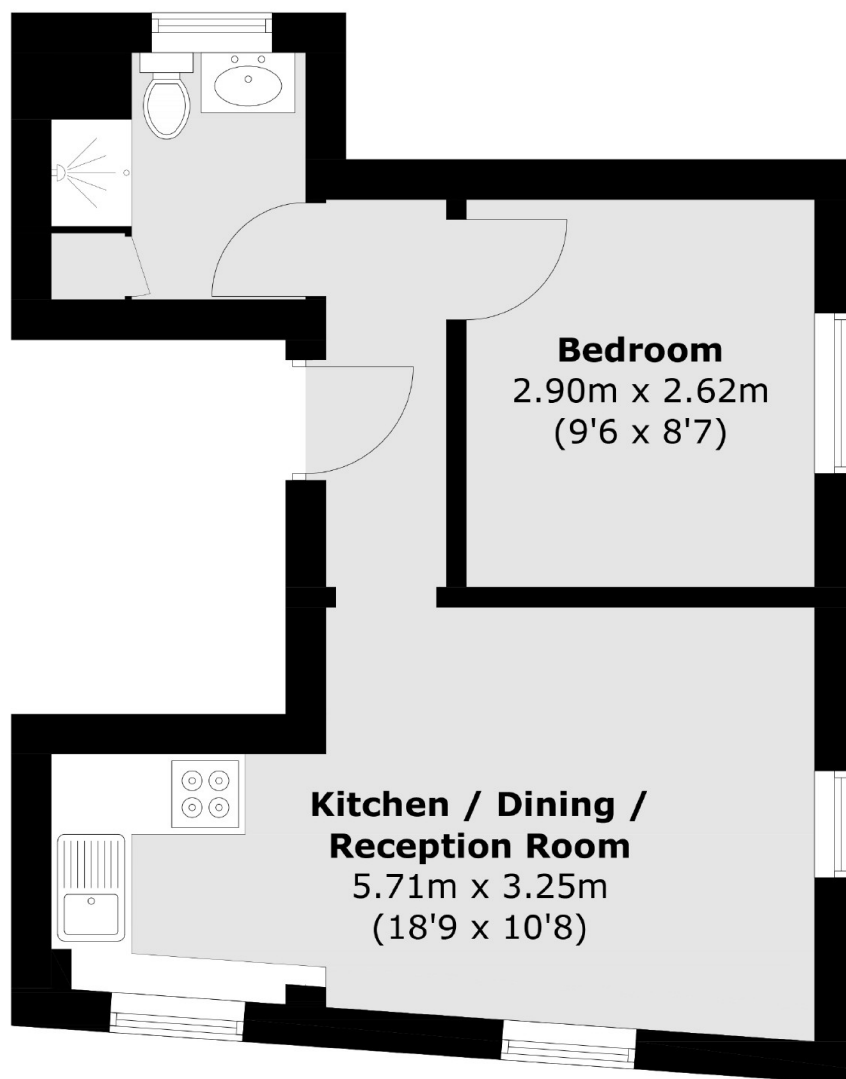
A very rarely available Victorian Conversion in prime central SE1, with a dual aspect, an open plan kitchen and living room, a generous double bedroom, a three piece shower room and ample storage. This is a chain free sale.

Launcelot Street is incredibly well-located, tucked just off the vibrant Lower Marsh, adjacent to Waterloo Station, moments from the South Bank, the Cut, the Old Vic and numerous other local attractions, restaurants, theatres and amenities.

### Features

- Victorian Conversion
- One Double Bedroom
- Open Plan Living Space
- Excellent Transport Links
- Very Centrally Located
- Chain Free Sale

# Launcelot Street, London, SE1



Total area (approx.): 30.0 sq. m (322.9 sq. ft)

## Dexters

London Bridge  
54 Borough High Street  
London  
SE1 1XL  
Sales  
020 7650 5 100

Energy Rating: . We aim to make our particulars both accurate and reliable. However they are not guaranteed; nor do they form part of an offer or contract. If you require clarification on any points then please contact us, especially if you're traveling some distance to view. Please note that appliances and heating systems have not been tested and therefore no warranties can be given as to their good working order.

 **RICS** | Regulated  
Estate Agent  
and Letting Agent

[dexters.co.uk](https://www.dexters.co.uk)