



## Rushworth Street, SE1

£646 Per week

FURNISHED Stylish second floor apartment forming part of this select modern development of nine flats in the heart of SE1. The property has a private balcony, a separate storage room, wood flooring and high quality open-plan kitchen with stone work surfaces.

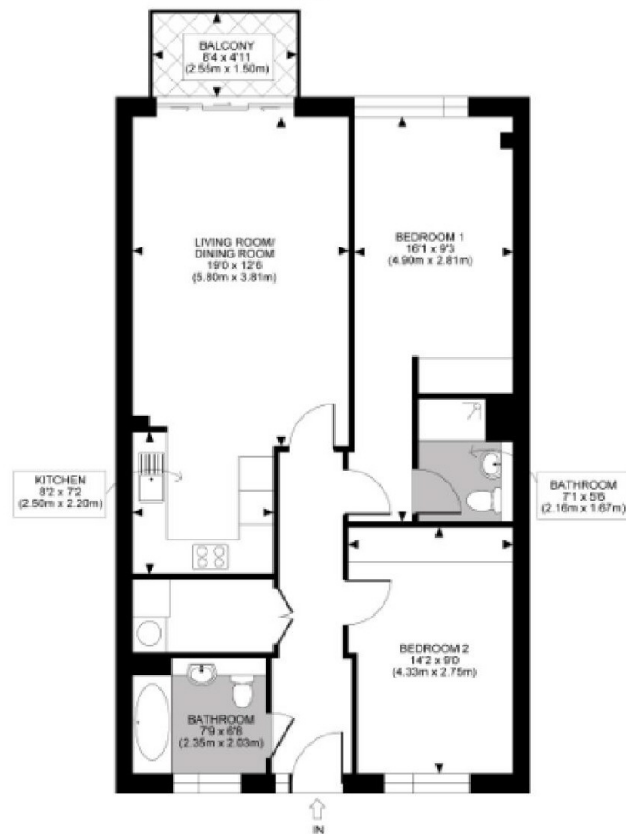
The property is situated between London Bridge and Waterloo stations. Close by are the restaurants, bars and theatres on The Cut and Blackfriars Road including The Laughing Gravy, renowned for it's Sunday Roast.

### Features

- Two Bedrooms
- Two Bathrooms
- Modern Development
- High Quality Finish
- Private Balcony
- Small Boutique Development

# Rushworth Street, London, SE1

SOUTHWARK GRAY STREET, SE1  
TOTAL APPROX. FLOOR PLAN AREA 839 SQ.FT. (78 SQ.M.)  
Unit 2



All measurements walls, doors, windows, fittings and their appliances, their size and locations are shown conventionally and are approximate only and cannot be regarded as being a representation either by the seller or his agent nor zentuvo  
[www.zentuvo.co.uk](http://www.zentuvo.co.uk)

## Dexters

London Bridge  
54 Borough High Street  
London  
SE1 1XL  
Lettings  
020 7650 5101

Energy Rating: B. We aim to make our particulars both accurate and reliable. However they are not guaranteed; nor do they form part of an offer or contract. If you require clarification on any points then please contact us, especially if you're traveling some distance to view. Please note that appliances and heating systems have not been tested and therefore no warranties can be given as to their good working order.



[dexters.co.uk](http://dexters.co.uk)