



Lant Street, SE1

£519 Per week

A very bright, modern one bedroom apartment in this modern, secure development. The property is a good example of open-plan living, has great storage and benefits from a large private balcony.

Lant Street is situated just over 200m away from Borough (Northern) and just under half a mile of Southwark (Jubilee) Tube stations, and is sat between the two. London Bridge, Borough market and Tate Modern are all within half a mile.

Features

- One Bedroom Apartment
- Great Natural Light
- Large Private Balcony
- High Ceilings
- Stunning Views
- Wood Flooring

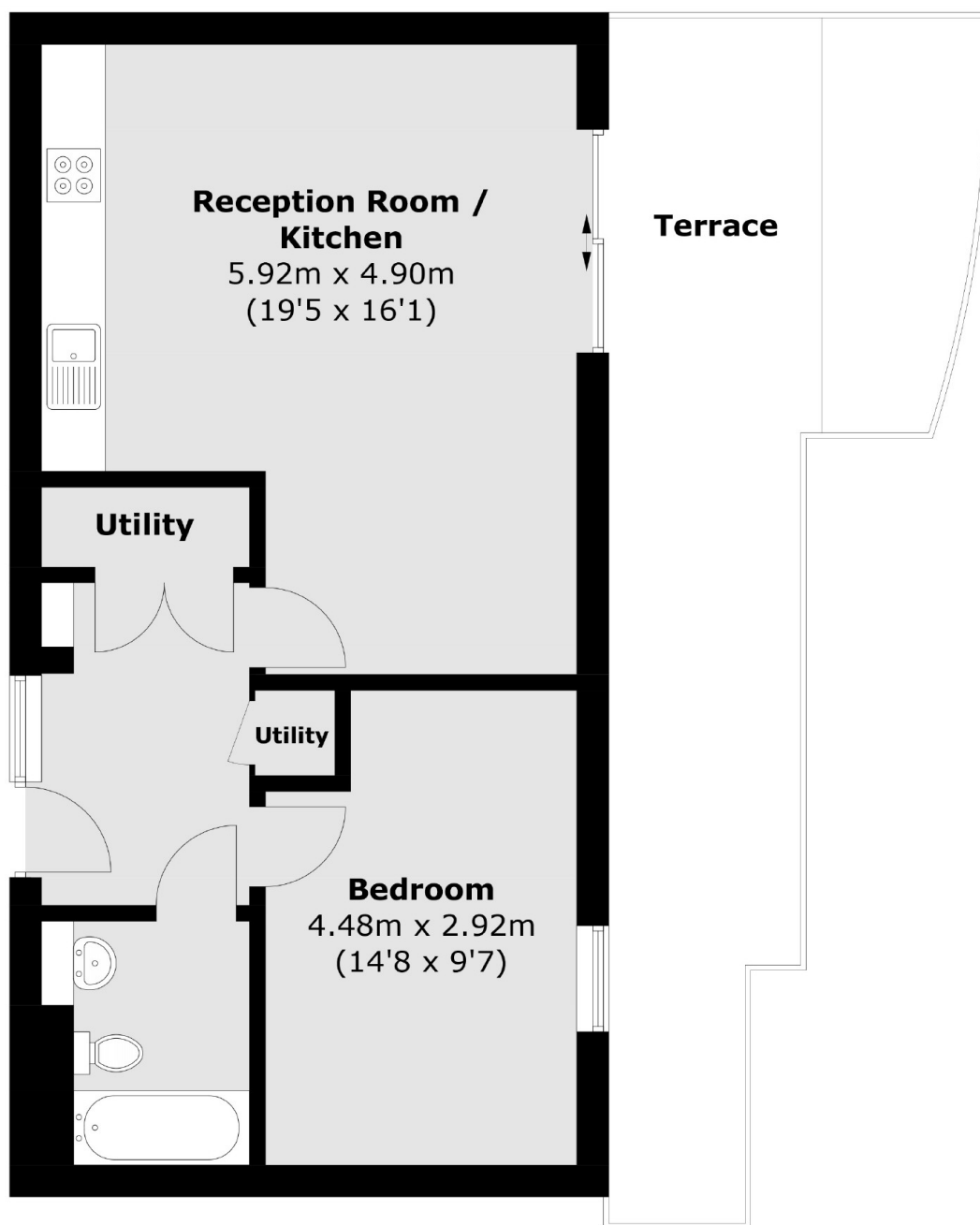


Lant Street, SE1

A very bright, modern one bedroom apartment in this modern, secure development. The property is a good example of open-plan living, has great storage and benefits from a large private balcony.



Lant Street, London, SE1



Total area (approx.): 53.3 sq. m (573.7 sq. ft)
Terrace : 25.3 sq. m (272.3 sq. ft)

Dexters

London Bridge
54 Borough High Street
London
SE1 1XL
Lettings
020 7650 5101

Energy Rating: C. We aim to make our particulars both accurate and reliable. However they are not guaranteed; nor do they form part of an offer or contract. If you require clarification on any points then please contact us, especially if you're traveling some distance to view. Please note that appliances and heating systems have not been tested and therefore no warranties can be given as to their good working order.

 **RICS** | Regulated
Estate Agent
and Letting Agent

dexters.co.uk