



## Walworth Road, SE17

£761 Per week

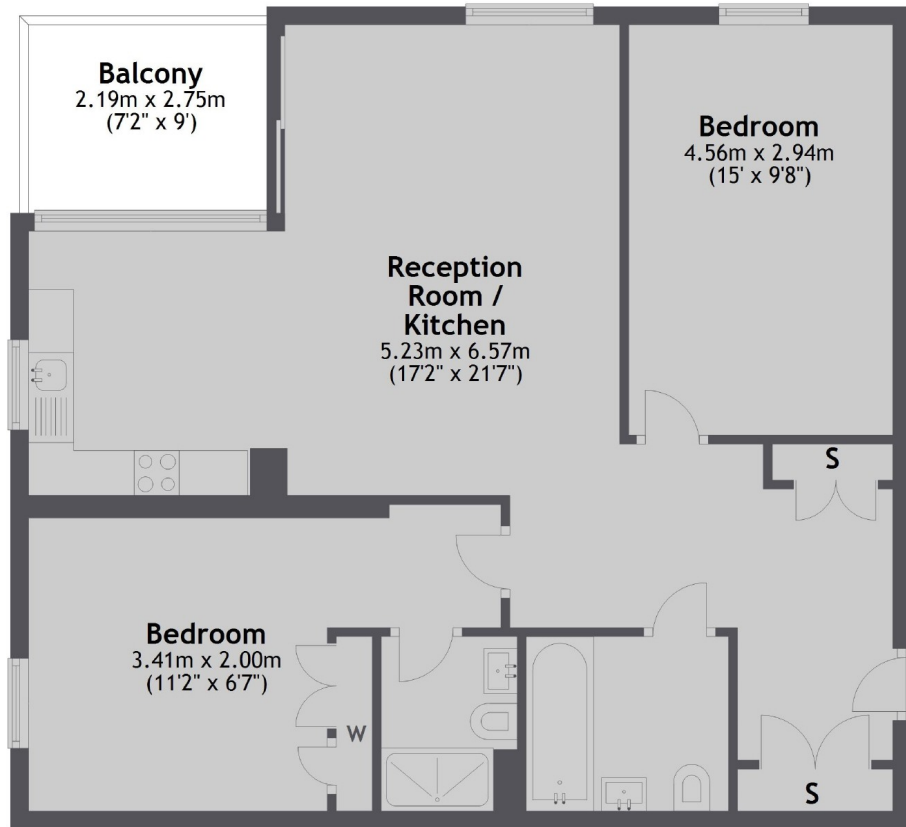
A stunning two bedroom, two bathroom apartment located in the sought after Elephant Park development. The apartment offers an open plan kitchen/reception room with a large private balcony.

The property is ideally located for the many amenities that Elephant and Castle has to offer. Walton Heights is located close to the train and underground stations.

### Features

- Two Double Bedrooms
- Private Balcony
- Two Bathrooms
- 24/7 Concierge
- Great Location
- Excellent Transport Links

Walworth Road,  
London, SE17



Total area: approx. 77.4 sq. metres (833.6 sq. feet)

**Dexters**

Vauxhall  
377-379 Kennington Lane  
London  
SE11 5QY  
Lettings  
020 7793 8111

Energy Rating: B. We aim to make our particulars both accurate and reliable. However they are not guaranteed; nor do they form part of an offer or contract. If you require clarification on any points then please contact us, especially if you're traveling some distance to view. Please note that appliances and heating systems have not been tested and therefore no warranties can be given as to their good working order.

 **RICS** | Regulated  
Estate Agent  
and Letting Agent

[dexters.co.uk](https://www.dexters.co.uk)